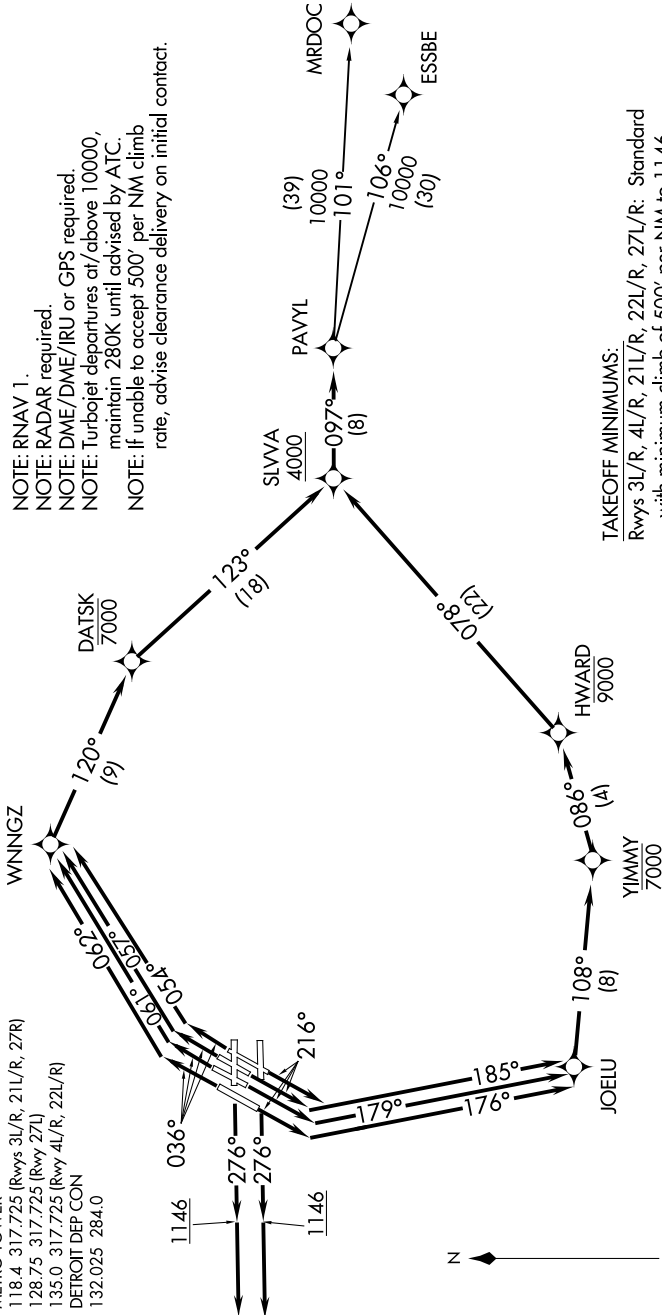


TOP ALTITUDE:  
17000

NOTE: RNAV 1.  
NOTE: RADAR required.  
NOTE: DME/DME/IRU or GPS required.  
NOTE: Turbojet departures at/above 10000, maintain 280K until advised by ATC.  
NOTE: If unable to accept 500' per NM climb rate, advise clearance delivery on initial contact.

TAKEOFF MINIMUMS:  
Rwys 3L/R, 4L/R, 21L/R, 22L/R, 27L/R: Standard with minimum climb of 500' per NM to 1146.



D-ATIS 118.125  
 CLNC DEL 120.65  
 CPDLC  
 GND CON  
 121.8 (NW) 119.45 (NE)  
 132.725 (SW) 119.25 (SE)  
 METRO TOWER  
 118.4 317.725 (Rwys 3L/R, 21L/R, 27R)  
 128.75 317.725 (Rwy 27L)  
 135.0 317.725 (Rwy 4L/R, 22L/R)  
 DETROIT DEP CON  
 132.025 284.0

(NARRATIVE ON FOLLOWING PAGE)

NOTE: Chart not to scale.