

WAAS CH 53300 W27B	APP CRS 276°	Rwy Idg 8500 TDZE 630 Apt Elev 645
--	------------------------	---

RNAV (GPS) RWY 27L

DETROIT METRO WAYNE COUNTY (DTW)

RNP APCH

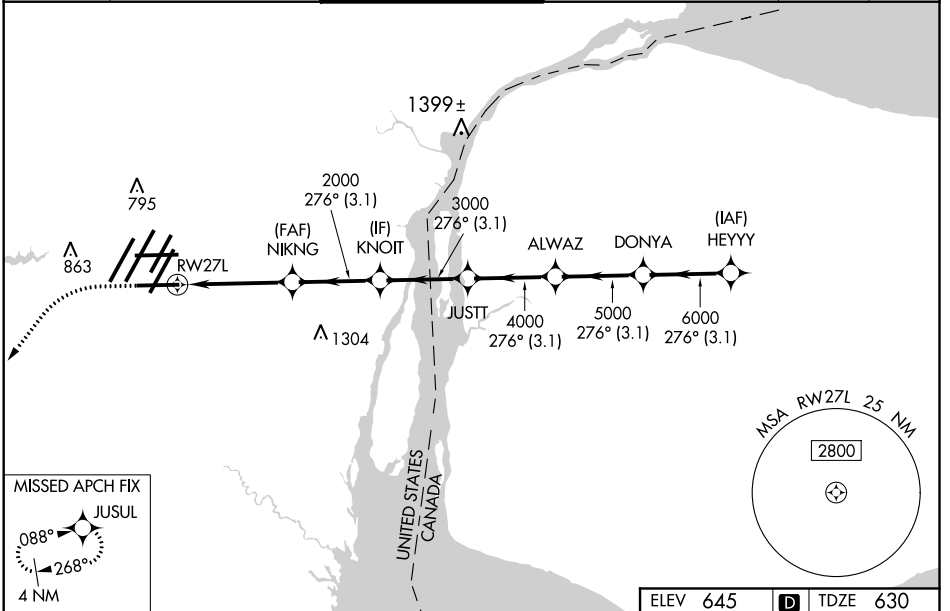
For uncompensated Baro-VNAV systems, LNAV/VNAV NA below -19°C (-2°F) or above 54°C (130°F). Simultaneous approach authorized. LNAV procedure NA during simultaneous operations. Use of FD or AP required during simultaneous operations. For inop ALS, increase LNAV/VNAV all Cats visibility to RVR 5000. ** RVR 1800 authorized with use of FD or AP or HUD to DA.

MALSR



MISSED APPROACH:
Climb to 1100 then climbing left turn to 4000 direct JUSUL and hold.

D-ATIS 133.675	DETROIT APP CON 124.05 284.0	METRO TOWER 128.75 317.725	GND CON 121.8 (NW) 119.45 (NE) 132.725 (SW) 119.25 (SE)	CLNC DEL 120.65	CPDLC
--------------------------	--	--------------------------------------	---	---------------------------	-------

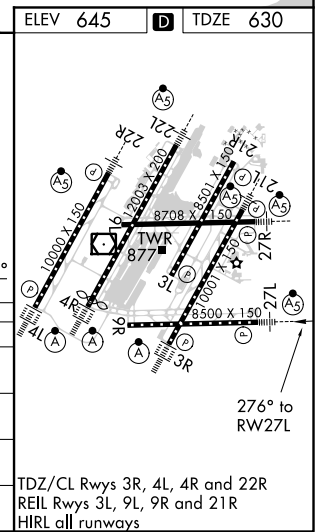
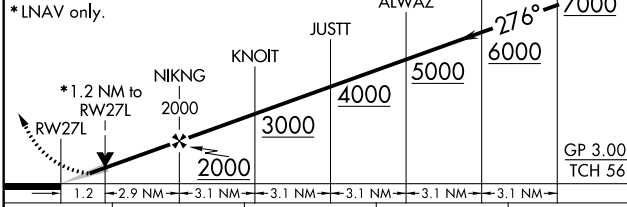


EC-1, 09 SEP 2021 to 07 OCT 2021

EC-1, 09 SEP 2021 to 07 OCT 2021

1100 4000 JUSUL

 VGSi and RNAV glidepath not coincident (VGSi Angle 3.00/TCH 71).



CATEGORY	A	B	C	D
LPV DA**	830/24		200 (200-½)	
LNAV/VNAV DA	958/30		328 (400-⅝)	
LNAV MDA	1080/24 450 (500-½)		1080/45 450 (500-⅞)	
CIRCLING	1180-1 535 (600-1)		1180-1½ 535 (600-1½) 1240-2 595 (600-2)	

TDZ/CL Rwy's 3R, 4L, 4R and 22R
 REIL Rwy's 3L, 9L, 9R and 21R
 HIRL all runways