

WAAS CH <b>86220</b> <b>W27A</b>	APP CRS <b>276°</b>	Rwy Idg <b>8708</b> TDZE <b>635</b> Apt Elev <b>645</b>
--	------------------------	---

# RNAV (GPS) RWY 27R

DETROIT METRO WAYNE COUNTY (DTW)

**RNP APCH**

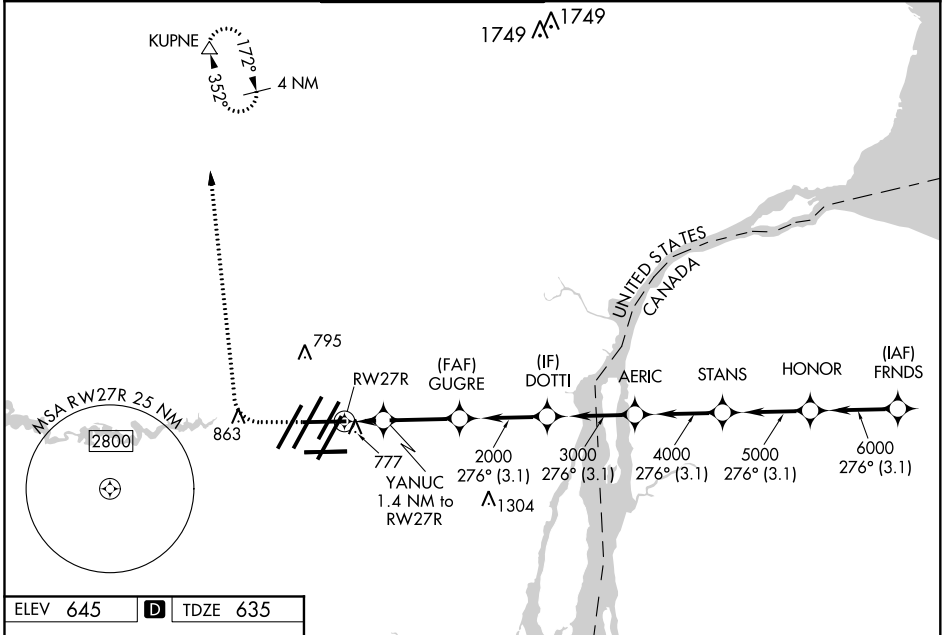
For uncompensated Baro-VNAV systems, LNAV/VNAV NA below -20°C (-4°F) or above 54°C (130°F). For inop ALS, increase LNAV Cat C and D visibility to RVR 6000. Simultaneous approach authorized. LNAV procedure NA during simultaneous operations. Use of FD or AP required during simultaneous operations. \*\*RVR 1800 authorized with use of FD or AP or HUD to DA.

MALSR

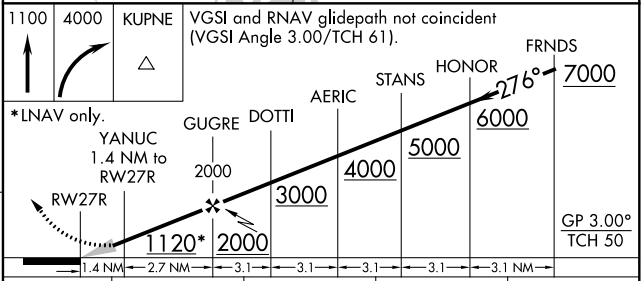
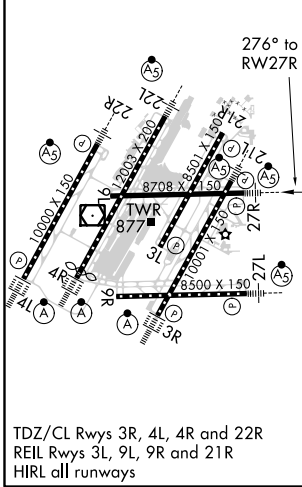


**MISSED APPROACH:** Climb to 1100 then climbing right turn to 4000 direct KUPNE and hold, continue climb-in-hold to 4000.

D-ATIS <b>133.675</b>	DETROIT APP CON <b>125.15 284.0</b>	METRO TOWER <b>118.4 317.725</b>	GND CON <b>121.8</b> (NW) <b>119.45</b> (NE) <b>132.725</b> (SW) <b>119.25</b> (SE)	CLNC DEL <b>120.65</b>	CPDLC
--------------------------	--	-------------------------------------	---	---------------------------	-------



ELEV 645	<b>D</b>	TDZE 635
----------	----------	----------



CATEGORY	A	B	C	D
LPV DA**		835/24	200 (200-½)	
LNAV/VNAV DA		938/24	303 (300-½)	
LNAV MDA	1040/24	405 (400-½)	1040/40	405 (400-¾)
<b>C</b> CIRCLING	1180-1	535 (600-1)	1180-1½ 535 (600-1½)	1240-2 595 (600-2)

EC-1, 09 SEP 2021 to 07 OCT 2021

EC-1, 09 SEP 2021 to 07 OCT 2021