

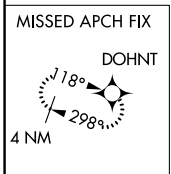
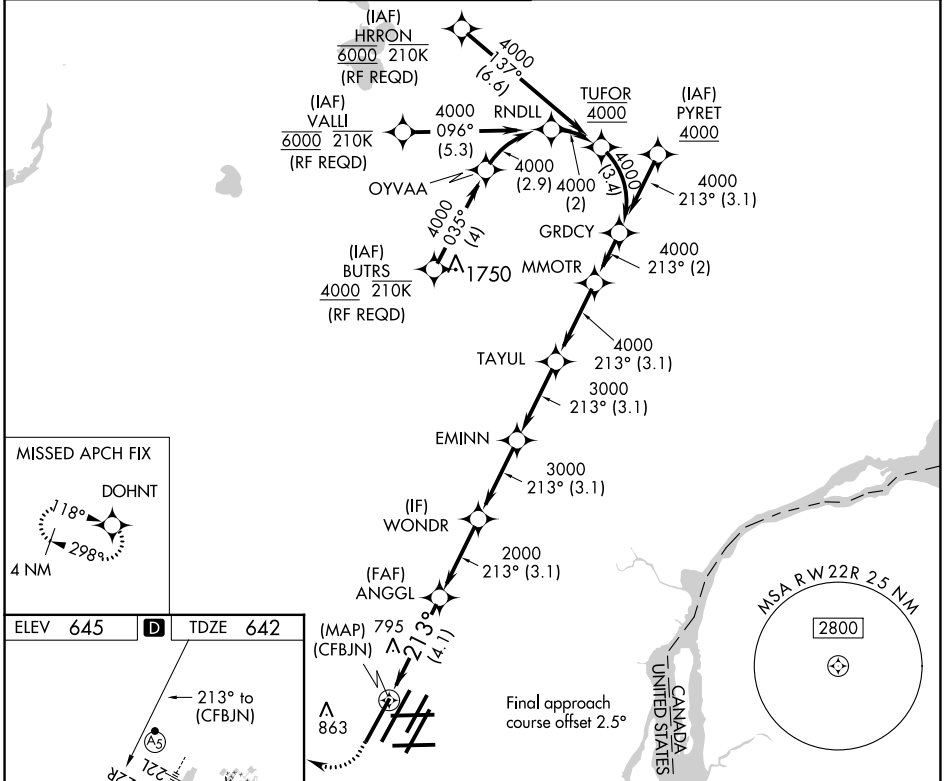
APP CRS <b>213°</b>	Rwy ldg TDZE Apt Elev	<b>10000</b> <b>642</b> <b>645</b>
------------------------	-----------------------------	--

# RNAV (RNP) U RWY 22R

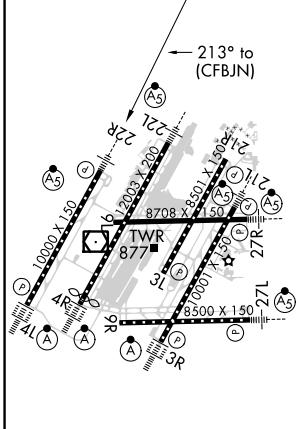
DETROIT METRO WAYNE COUNTY (DTW)

RNP AR APCH. ▼ For uncompensated Baro-VNAV systems, procedure NA below -19°C (-2°F) or above 54°C (130°F). Simultaneous approach authorized. For inop ALS, increase RNP 0.30 all Cats visibility to RVR 5500.	MALS R 	MISSED APPROACH: Climb to 1100 then climbing right turn to 4000 direct DOHNT and hold.
--	------------	--

D-ATIS <b>133.675</b>	DETROIT APP CON <b>124.05 284.0</b>	METRO TOWER <b>135.0 317.725</b>	GND CON <b>121.8</b> (NW) <b>119.45</b> (NE) <b>132.725</b> (SW) <b>119.25</b> (SE)	CLNC DEL <b>120.65</b>	CPDLC
--------------------------	--	-------------------------------------	---	---------------------------	-------

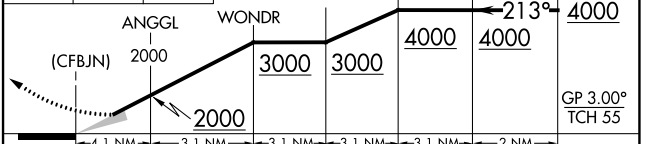


ELEV 645	<b>D</b>	TDZE 642
----------	----------	----------



TDZ/CL Rwy 3R, 4L, 4R and 22R  
HIRL all runways  
REIL Rwy 3L, 9L, 9R and 21R

1100	4000	DOHNT	VGSI and RNAV glidepath not coincident (VGSI Angle 3.00/TCH 71).
------	------	-------	--



CATEGORY	A	B	C	D
RNP 0.30 DA	987/30		345 (400-5%)	

EC-1, 09 SEP 2021 to 07 OCT 2021

EC-1, 09 SEP 2021 to 07 OCT 2021

**AUTHORIZATION REQUIRED**