

WAAS CH 99601 W22A	APP CRS 216°	Rwy Idg 12003 TDZE 637 Apt Elev 645
--	------------------------	--

RNAV (GPS) Z RWY 22L

DETROIT METRO WAYNE COUNTY (DTW)

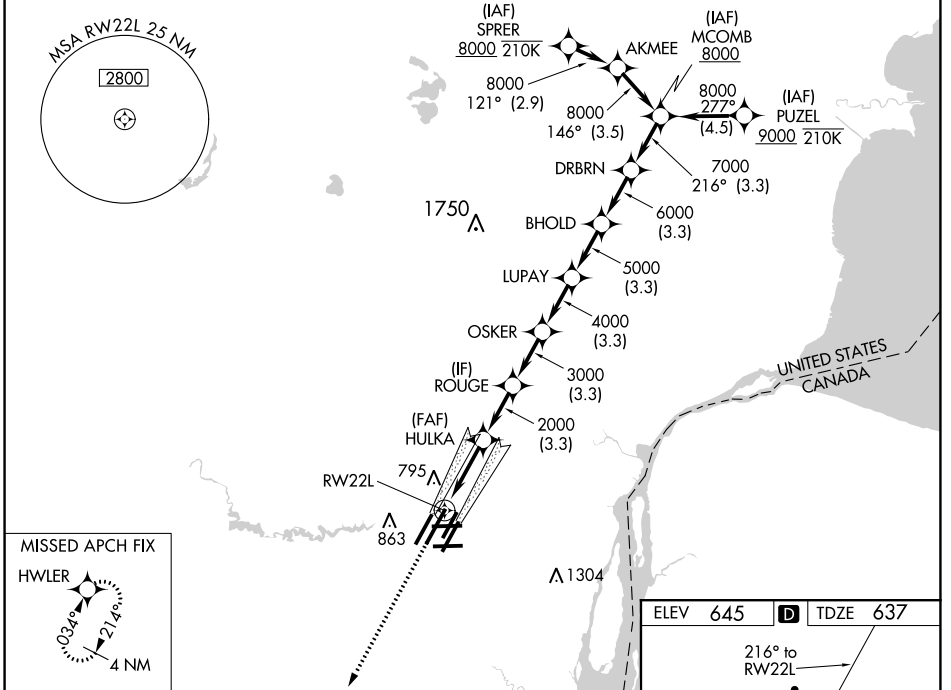
RNP APCH.

▼ For uncompensated Baro-VNAV systems, LNAV/VNAV NA below -10°C (14°F) or above 54°C (130°F). Simultaneous approach authorized. LNAV procedure NA during simultaneous operations. Use of FD or AP required during simultaneous operations. For inop ALS, increase LNAV/VNAV all Cats visibility to RVR 4500 and LNAV Cat C/D visibility to 1½ SM. #RVR 1800 authorized with use of FD or AP or HUD to DA.

MALSRL
AS

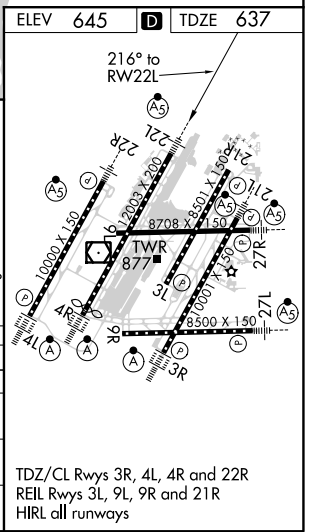
MISSED APPROACH:
Climb to 4000 direct
HWLER and hold.

D-ATIS 133.675	DETROIT APP CON 124.05 284.0	METRO TOWER 128.125 317.725	GND CON 121.8 (NW) 119.45 (NE) 132.725 (SW) 119.25 (SE)	CLNC DEL 120.65	CPDLC
--------------------------	--	---------------------------------------	---	---------------------------	-------



MISSED APCH FIX
HWLER

4000	HWLER				
*LNAV only.		RW22L			
* 1.3 NM to RW22L		HULKA 2000			
1.3 NM		3 NM		3.3 NM	
ROUGE	OSKER	LUPAY	BHOLD	DRBRN	MCOMB
3000	4000	5000	6000	7000	8000
GP 2.85°		TCH 60°			
216°	to RW22L				
CATEGORY	A	B	C	D	
LPV DA#	837/24		200 (200-½)		
LNAV/VNAV DA	938/24		301 (300-½)		
LNAV MDA	1100/24 463 (500-½)		1100/50 463 (500-¾)		
CIRCLING	1180-1 535 (600-1)		1180-1½ 535 (600-½)		1240-2 595 (600-2)



EC-1, 09 SEP 2021 to 07 OCT 2021

EC-1, 09 SEP 2021 to 07 OCT 2021