

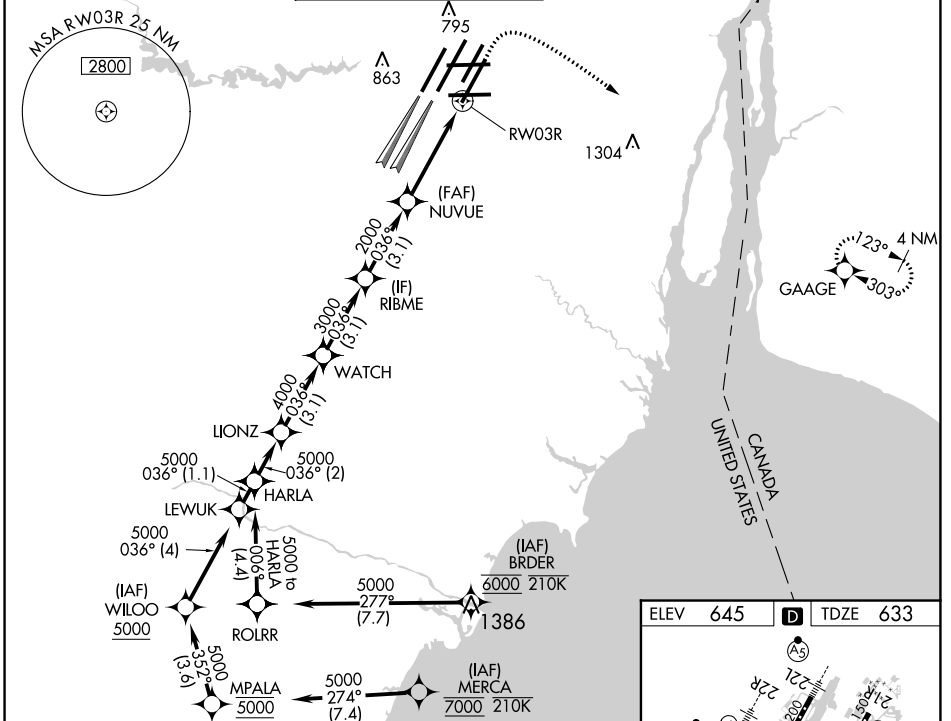
WAAS CH 61304 W03A	APP CRS 036°	Rwy Idg 10001 TDZE 633 Apt Elev 645
--	------------------------	--

RNAV (GPS) Z RWY 3R

DETROIT METRO WAYNE COUNTY (DTW)

RNP APCH.	<p>▼ For uncompensated Baro-VNAV systems, LNAV/VNAV NA below -19°C (-2°F) or above 54°C (130°F). Simultaneous approach authorized. LNAV procedure NA during simultaneous operations. Use of FD or AP required during simultaneous operations.</p>	ALSF-2 	MISSED APPROACH: Climb to 1100 then climbing right turn to 4000 direct GAAGE and hold, continue climb-in-hold to 4000.
-----------	---	------------	--

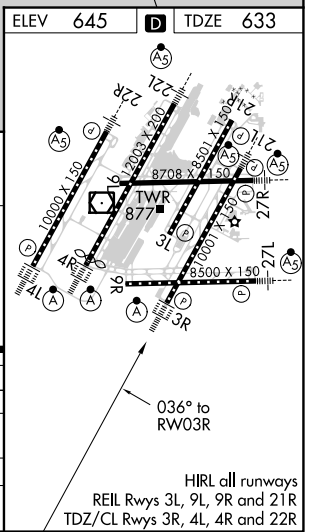
D-ATIS 133.675	DETROIT APP CON 125.15 284.0	METRO TOWER 118.4 317.725	GND CON 121.8 (NW) 119.45 (NE) 132.725 (SW) 119.25 (SE)	CLNC DEL 120.65	CPDLC
--------------------------	--	-------------------------------------	---	---------------------------	-------



VGSI and RNAV glidepath not coincident (VGSI Angle 3.00/TCH 70).

	HARLA	LIONZ	WATCH	RIBME	NUVUE	GAAGE
	5000-036°	5000	4000	3000	2000	1100 4000
GP 3.00° TCH 54	2 NM	3.1 NM	3.1 NM	3.1 NM	2.9 NM	1.2
CATEGORY	A		B	C	D	
LPV DA	833/18		200 (200-1/2)			
LNAV/VNAV DA	1013/35		380 (400-5/8)			
LNAV MDA	1080/24	447 (500-1/2)		1080/45	447 (500-7/8)	
CIRCLING	1180-1	535 (600-1)	1180-1 1/2 535 (600-1 1/2)		1240-2 595 (600-2)	

*INAV only.
*1.2 NM to RW03R



EC-1, 09 SEP 2021 to 07 OCT 2021

EC-1, 09 SEP 2021 to 07 OCT 2021