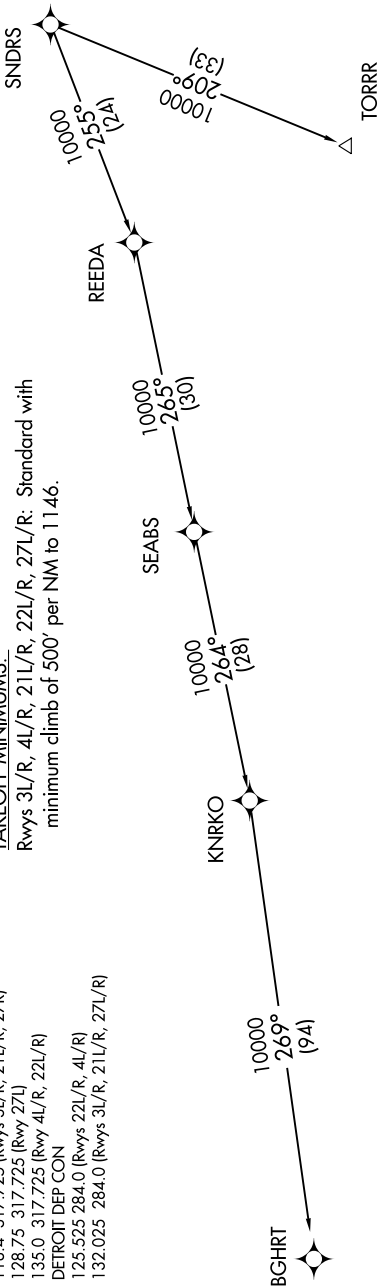


TOP ALTITUDE:
17000

TAKEOFF MINIMUMS:

Rwys 3L/R, 4L/R, 21L/R, 22L/R, 27L/R: Standard with minimum climb of 500' per NM to 1146.

- D-ATIS 118.125
- CLNC DEL 120.65
- CPDLC
- GND CON
- 121.8 (NW) 119.45 (NE)
- 132.725 (SW) 119.25 (SE)
- METRO TOWER
- 118.4 317.725 (Rwys 3L/R, 21L/R, 27R)
- 128.75 317.725 (Rwy 27L)
- 135.0 317.725 (Rwy 4L/R, 22L/R)
- DETROIT DEP CON
- 125.525 284.0 (Rwys 22L/R, 4L/R)
- 132.025 284.0 (Rwys 3L/R, 21L/R, 27L/R)



- NOTE: RNAV 1.
- NOTE: RADAR required.
- NOTE: DME/DME/IRU or GPS required.
- NOTE: Turbojet departures at/above 10000, maintain 280K until advised by ATC.
- NOTE: TORRR TRANSITION: For use by KIND and KCVG area arrivals only and flights filed at or below FL220, or as assigned by ATC.
- NOTE: If unable to accept 500' per NM climb rate, advise clearance delivery on initial contact.

NOTE: Chart not to scale.

(NARRATIVE ON FOLLOWING PAGE)