

TRMML THREE DEPARTURE (RNAV) Departure Routes

**TOP ALTITUDE:
17000**

TRMML

See following page for Transition Route

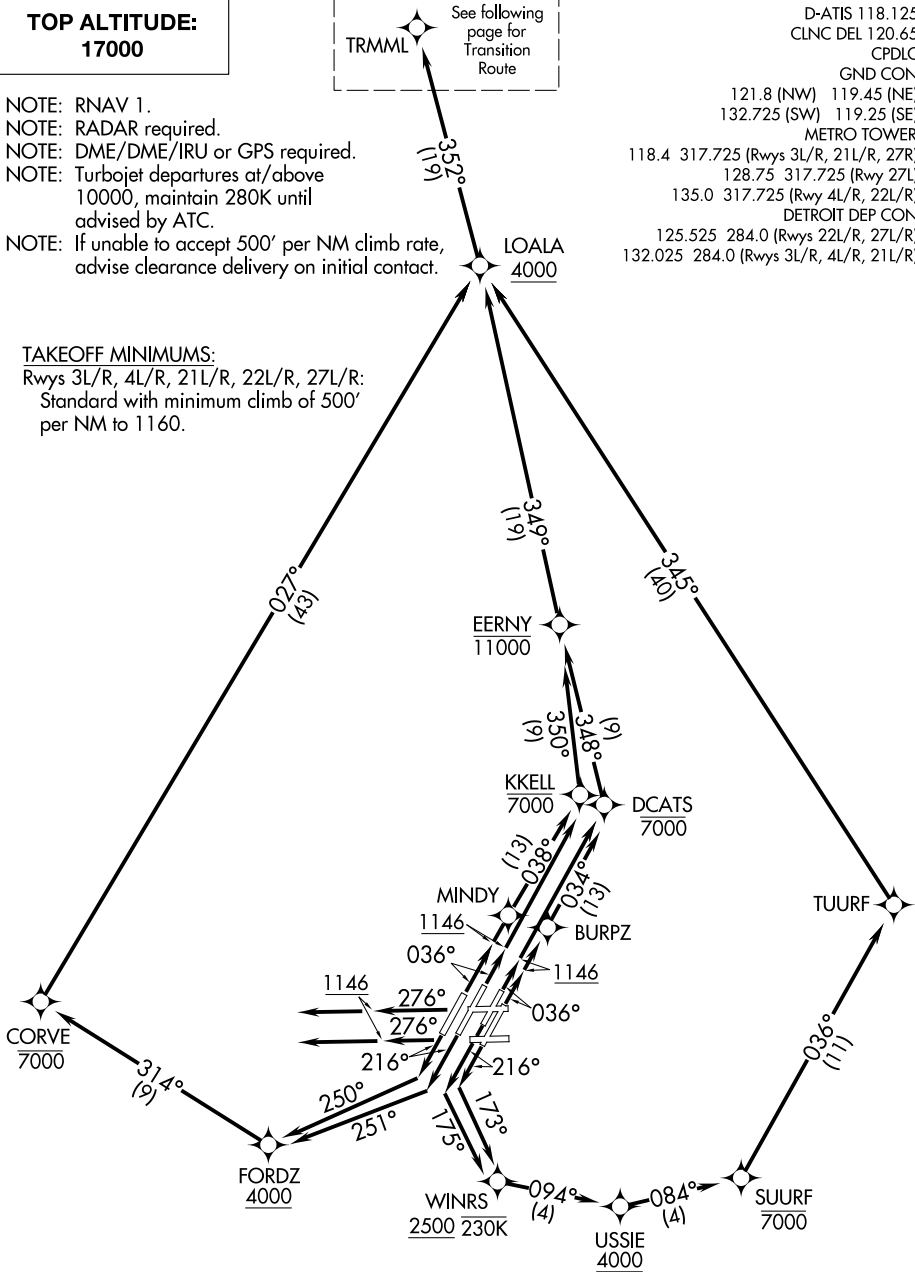
D-ATIS 118.125
CLNC DEL 120.65
CPDLC
GND CON

- NOTE: RNAV 1.
- NOTE: RADAR required.
- NOTE: DME/DME/IRU or GPS required.
- NOTE: Turbojet departures at/above 10000, maintain 280K until advised by ATC.
- NOTE: If unable to accept 500' per NM climb rate, advise clearance delivery on initial contact.

121.8 (NW) 119.45 (NE)
132.725 (SW) 119.25 (SE)
METRO TOWER
118.4 317.725 (Rwys 3L/R, 21L/R, 27R)
128.75 317.725 (Rwy 27L)
135.0 317.725 (Rwys 4L/R, 22L/R)
DETROIT DEP CON
125.525 284.0 (Rwys 22L/R, 27L/R)
132.025 284.0 (Rwys 3L/R, 4L/R, 21L/R)

TAKEOFF MINIMUMS:

Rwys 3L/R, 4L/R, 21L/R, 22L/R, 27L/R:
Standard with minimum climb of 500' per NM to 1160.



(CONTINUED ON FOLLOWING PAGE)

NOTE: Chart not to scale.

EC-1, 09 SEP 2021 to 07 OCT 2021

EC-1, 09 SEP 2021 to 07 OCT 2021