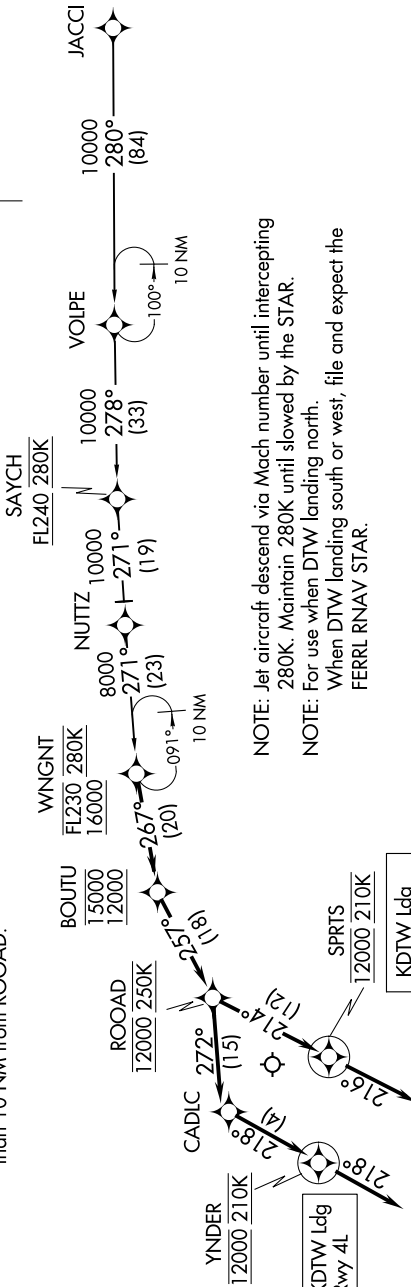


EC-1, 09 SEP 2021 to 07 OCT 2021

D-ATIS 133.675
DETROIT APP CON
126.225 284.0



NOTE: Chart not to scale.

NOTE: RADAR required.

NOTE: RNAV 1.

NOTE: DME/DME/IRU or GPS required.

NOTE: Use Rwy 3R transition or as assigned by ATC.
Expect runway assignment from Detroit APP CON no later than 10 NM from ROOAD.

NOTE: Jet aircraft descend via Mach number until intercepting 280K. Maintain 280K until slowed by the STAR.

NOTE: For use when DTW landing north.
When DTW landing south or west, file and expect the FERRI RNAV STAR.

ARRIVAL ROUTE DESCRIPTION

JACCI TRANSITION (JACCI.WNGNT2)

From WNGNT on track 267° to cross BOUTU between 12000 and 15000, then on track 257° to cross ROOAD at 12000 and at 250K. LANDING RUNWAYS 3L/R, 4R: From ROOAD on track 214° to cross SPRTS at 12000 and at 210K, then on track 216°. Expect RADAR vectors to final approach course.

LANDING RUNWAY 4L: From ROOAD on track 272° to CADLIC, then on track 218° to cross YNDER at 12000 and at 210K, then on track 218°. Expect RADAR vectors to final approach course.

EC-1, 09 SEP 2021 to 07 OCT 2021