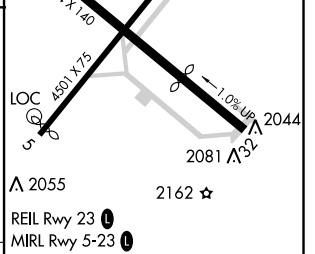
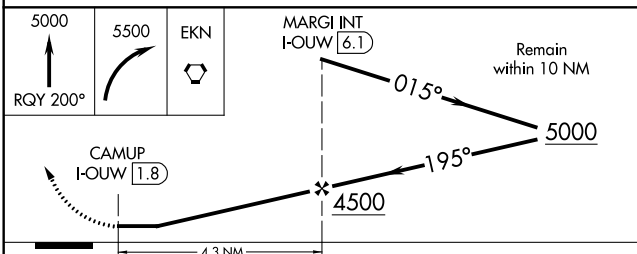
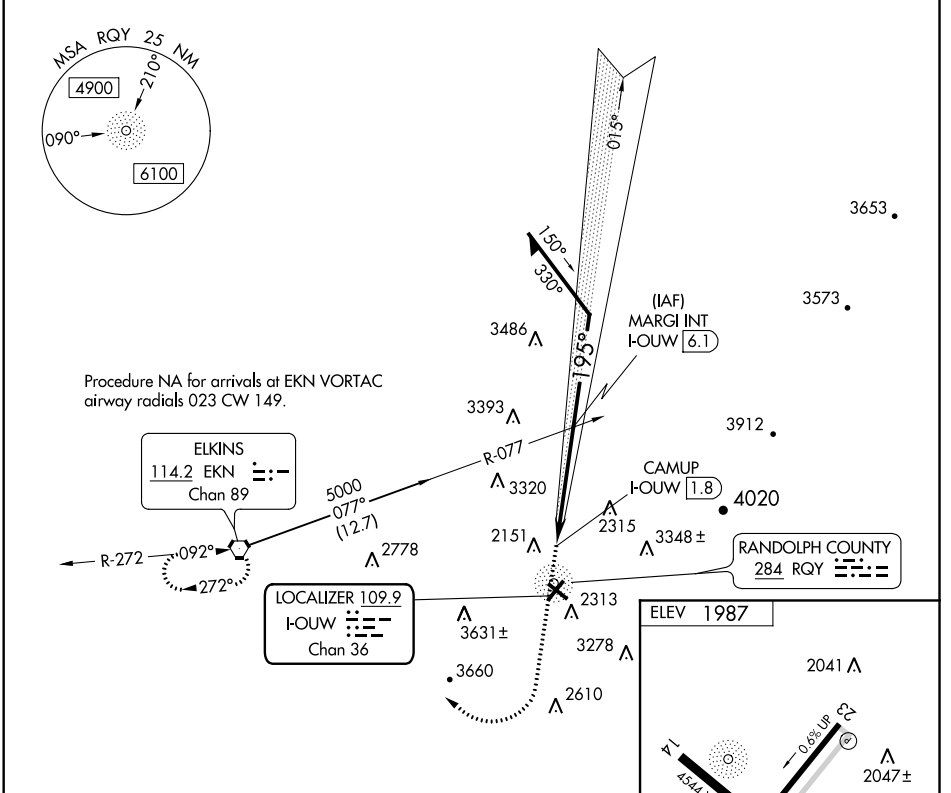


LOC/DME I-OUW 109.9 Chan 36	APP CRS 195°	Rwy Idg TDZE Apt Elev	N/A N/A 1987
---	------------------------	-----------------------------	---

ELKINS-RANDOLPH COUNTY-JENNINGS RANDOLPH FLD (EKN)
LDA-C

ADF REQUIRED	MISSED APPROACH: Climb to 5000 on RQY NDB 200° then climbing right turn to 5500 direct EKN VORTAC and hold.
<p>▼</p> <p>▲ Circling Rwy 14, 23, 32 NA at night. When local altimeter setting not received, use Buckhannon altimeter setting and increase all MDA 100 feet.</p> <p>❄ -20°C</p>	

ASOS 119.275	CLARKSBURG APP CON ★ 121.15 284.65	CTAF 123.6	122.9 0
------------------------	--	----------------------	----------------



CATEGORY	A	B	C	D	FAF to MAP 4.3 NM					
CIRCLING	3100-1¼	3140-1½	3720-3	4020-3	Knots	60	90	120	150	180
	1113 (1200-1¼)	1153 (1200-1½)	1733 (1800-3)	2033 (2100-3)	Min:Sec	4:18	2:52	2:09	1:43	1:26

NE-4, 09 SEP 2021 to 07 OCT 2021

NE-4, 09 SEP 2021 to 07 OCT 2021