

APP CRS	Rwy Idg	4501
211°	TDZE	1958
	Apt Elev	1987

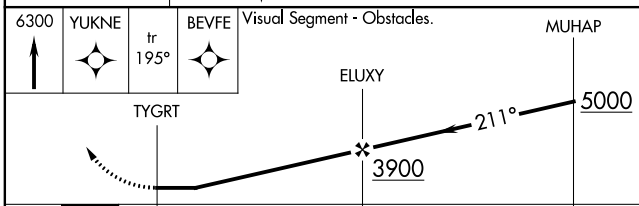
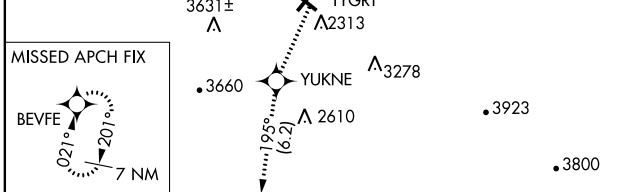
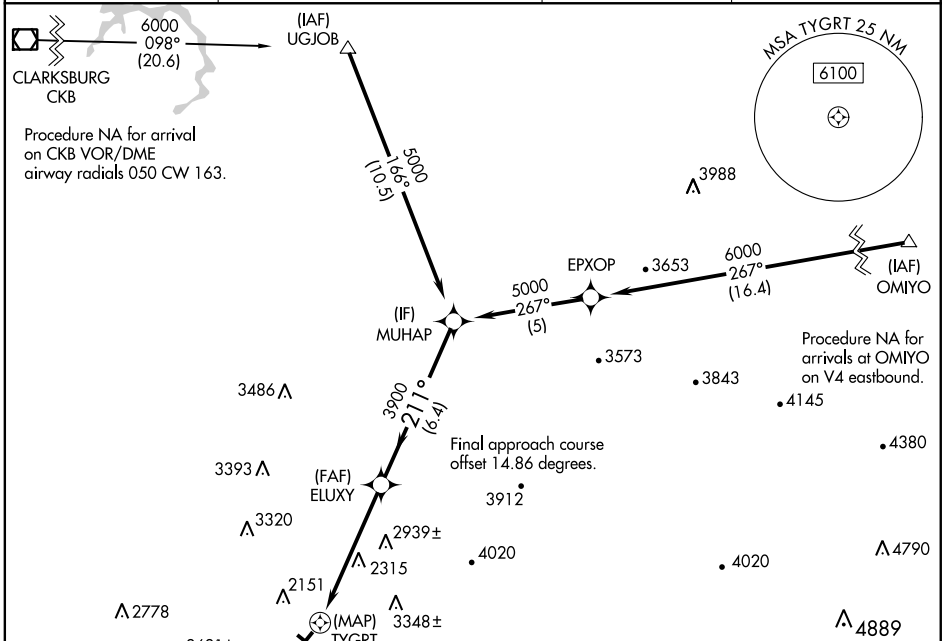
RNAV (GPS) RWY 23

ELKINS-RANDOLPH COUNTY-JENNINGS RANDOLPH FLD (EKN)

RNP APCH. MISSED APPROACH: Climb to 6300 direct YUKNE and on track 195° to BEVFE and hold, continue climb-in hold to 6300.

Straight-in Rwy 23 NA at night, Circling to Rwy 14, 23, 32 NA at night.
 When local altimeter setting not received, use Buckhannon altimeter setting and increase all MDAs 100 feet. Rwy 23 helicopter visibility reduction below 1 SM NA.

ASOS 119.275	CLARKSBURG APP CON ★ 121.15 284.65	CTAF 123.6	122.9
------------------------	--	----------------------	--------------



ELEV 1987	TDZE 1958
-----------	-----------

2041 Δ

2047± Δ

2044 Δ

2081 Δ

2162 ☆

2055 Δ

0.6% UP

1.0% UP

4501 X 140

4501 X 75

CATEGORY	A	B	C	D
LNVA MDA	3160-1¼ 1202 (1200-1¼)	3160-1½ 1202 (1200-1½)	3160-3	1202 (1200-3)
CIRCLING	3160-1¼ 1173 (1200-1¼)	3160-1½ 1173 (1200-1½)	3720-3 1733 (1800-3)	NA

REIL Rwy 23

MIRL Rwy 5-23

RNAV (GPS) RWY 23

NE-4, 09 SEP 2021 to 07 OCT 2021

NE-4, 09 SEP 2021 to 07 OCT 2021