

ILS or LOC RWY 17C

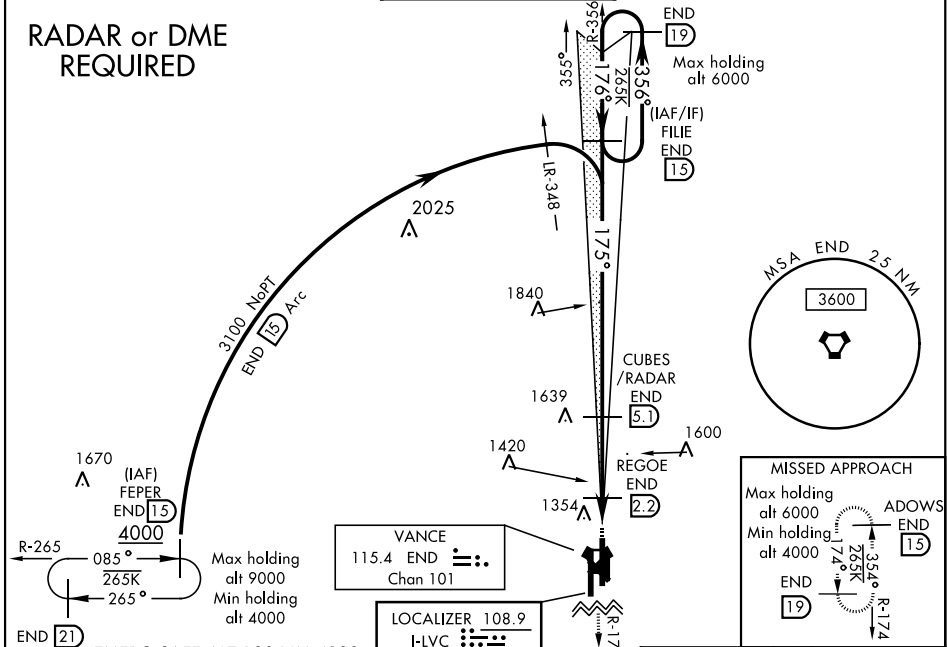
LOC I-LVC 108.9	APCH CRS 175°	Rwy Idg 9217
		TDZE 1277
		Arprt Elev 1307

AL-135 [USAF]

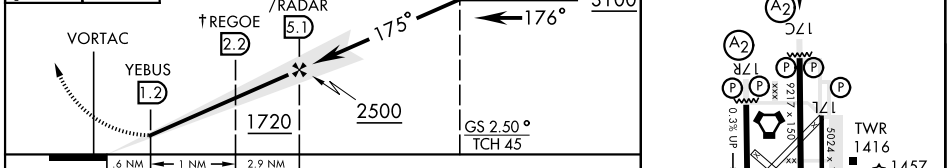
VANCE AFB (KEND)

▼ *When ALS inop, increase RVR to 55, vis to 1 mile. **When ALS inop, increase CAT AB RVR to 55, vis to 1 mile; CAT CDE vis to 1 3/8 mile. ***Circling not authorized at night to Rwy 35R.	SALSF A2	MISSED APPROACH: Climb to 4000, intercept END VORTAC R-174 to ADOWS and hold.
---	-------------	---

ATIS ★ 115.4 263.15	VANCE APP CON 125.45 388.2 EAST 126.75 346.325 WEST	VANCE TOWER ★ 124.05 259.1	GND CON 121.8 289.4	CLNC DEL 225.4
-------------------------------	---	--------------------------------------	-------------------------------	--------------------------



4000 END R-174 ADOWS END 15 VGS I and ILS glidepath not coincident (VGS I Angle 2.50/TCH 51)	REGOE END 2.2 CUBES/RADAR END 5.1 FILE END 15 † LOC only	REIL Rwy 17L MIRL Rwy 17L-35R 175° 4.5 NM from FAF
--	---	--



CATEGORY	A	B	C	D	E
S-ILS 17C	1477/40		200	(200-3/4)	
S-LOC 17C*	1620/40		343	(400-3/4)	
CIRCLING ***	1760-1 453 (500-1)	1820-1 1/2 513 (600-1 1/2)	1920-2 613 (700-2)	2300-3 993 (1000-3)	

WITHOUT REGOE FIX					
S-LOC 17C **	1720/40	443 (500-3/4)	1720/55	443 (500-1)	
CIRCLING ***	1760-1 453 (500-1)	1820-1 1/2 513 (600-1 1/2)	1920-2 613 (700-2)	2300-3 993 (1000-3)	

HIRL Rwy 17C-35C, 17R-35L	FAF to MAP 3.9 NM
---------------------------	-------------------

Knots	60	90	120	150	180
Min:Sec	3:54	2:36	1:57	1:34	1:18

ENID, OKLAHOMA 36°20'N-97°55'W VANCE AFB (KEND)

Amtd 1 26MAR20

ILS or LOC RWY 17C

SC-1, 09 SEP 2021 to 07 OCT 2021

SC-1, 09 SEP 2021 to 07 OCT 2021