

ENID, OKLAHOMA

# ILS or LOC RWY 35C

LOC I-END <b>110.1</b>	APCH CRS <b>355°</b>	Rwy Idg 9217	TDZE 1293	AL-135 [USAF]	VANCE AFB (KEND)
		Arprt Elev 1307			

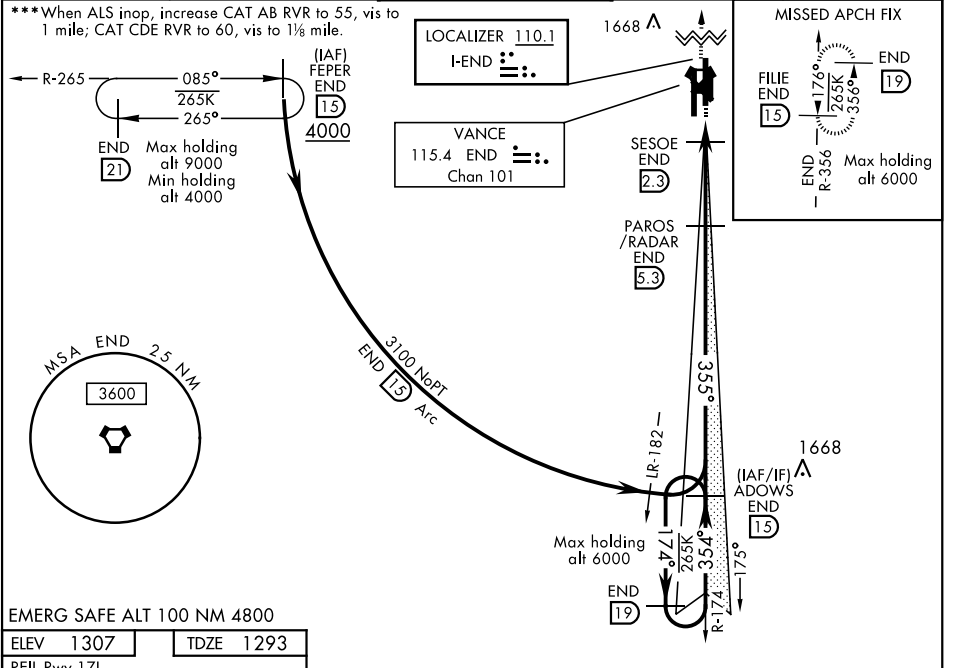
**RADAR or DME required.**

**MISSSED APPROACH:** Climb to 4000, intercept END VORTAC R-356 to FILE and hold.

**SALSF** (A2)

**\*\*\*When ALS inop, increase CAT AB RVR to 55, vis to 1 mile; CAT CDE RVR to 50, vis to 1 mile.  
\*\*Circling not authorized at night to Rwy 35R.**

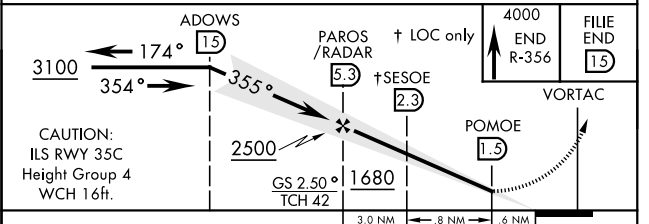
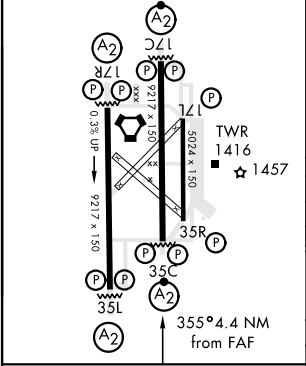
<b>ATIS</b> ★ <b>115.4 263.15</b>	<b>VANCE APP CON</b> <b>125.45 388.2 EAST</b> <b>126.75 346.325 WEST</b>	<b>VANCE TOWER</b> ★ <b>124.05 259.1</b>	<b>GND CON</b> <b>121.8 289.4</b>	<b>CLNC DEL</b> <b>225.4</b>
--------------------------------------	--	---	--------------------------------------	---------------------------------



EMERG SAFE ALT 100 NM 4800

ELEV 1307	TDZE 1293
-----------	-----------

REIL Rwy 17L  
MIRL Rwy 17L-35R  
HIRL Rwy 17C-35C, 17R-35L



CATEGORY	A	B	C	D	E
S-ILS 35C	1493/40		200	(200-¾)	
S-LOC 35C*	1620/40		327	(400-¾)	
<b>CIRCLING**</b>	1760-1		1820-1½	1920-2	2300-3
	453 (500-1)		513 (600-1½)	613 (700-2)	993 (1000-3)
<b>WITHOUT SESOE FIX MINIMUMS</b>					
S-LOC 35C***	1680/40 387 (400-¾)		1680/45 387 (400-¾)		
<b>CIRCLING**</b>	1760-1		1820-1½	1920-2	2300-3
	453 (500-1)		513 (600-1½)	613 (700-2)	993 (1000-3)

ENID, OKLAHOMA

36° 20' N - 97° 55' W

VANCE AFB (KEND)

Amdt 1 10SEP20

# ILS or LOC RWY 35C

SC-1, 09 SEP 2021 to 07 OCT 2021

SC-1, 09 SEP 2021 to 07 OCT 2021