

ENID, OKLAHOMA

# RNAV (GPS) RWY 17C

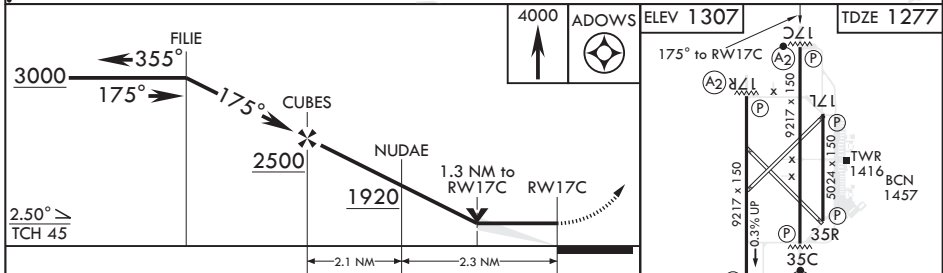
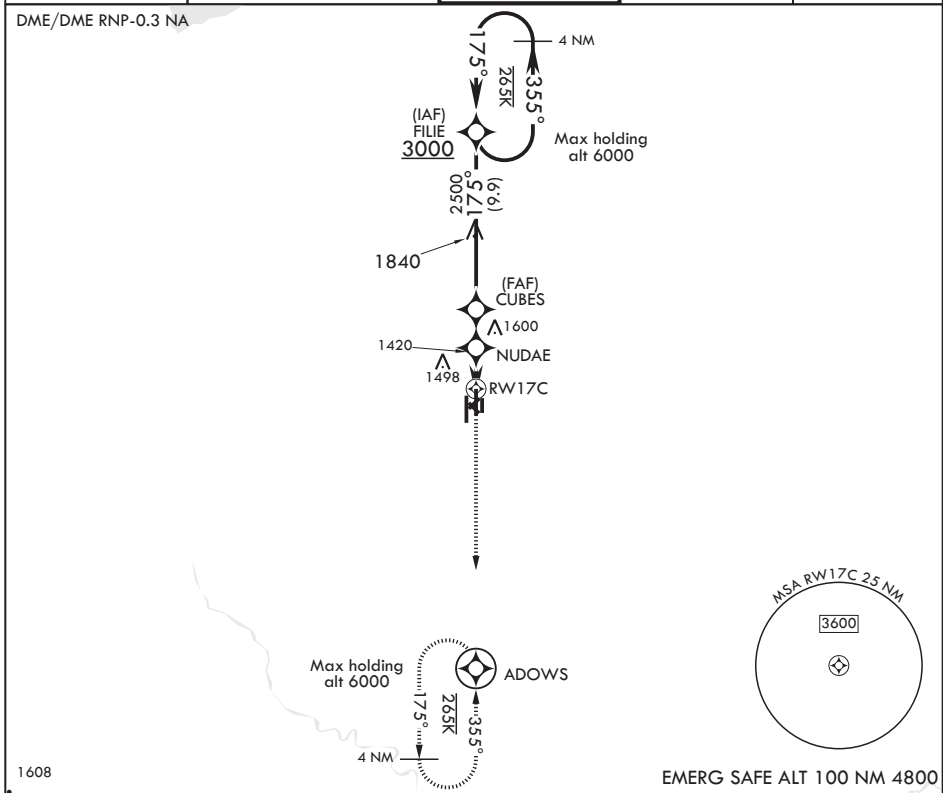
APCH CRS	Rwy Idg	9217
175°	TDZE	1277
	Arprt Elev	1307

AL-135 (USAF)

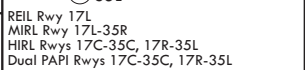
VANCE AFB (KEND)

<p><b>▼</b> * When ALS inop, increase CAT AB RVR to 55 and vis to 1 mile, CAT CDE RVR to 60 and vis to 1 1/8 miles. ** Circling not authorized at night to RWY 35R.</p>	<p>SALS</p>	<p>MISSED APPROACH: Climb to 4000 direct ADOWS and hold.</p>
---	-------------	--

<p>ATIS*</p> <p>115.4 263.15</p>	<p>APP CON</p> <p>125.45 388.2 EAST 126.75 346.325 WEST</p>	<p>TOWER*</p> <p>124.05 259.1</p>	<p>GND CON</p> <p>121.8 289.4</p>	<p>CLNC DEL</p> <p>225.4</p>
----------------------------------	---	-----------------------------------	-----------------------------------	------------------------------



CATEGORY	A	B	C	D	E
LNAV MDA*	1680/40 403 (400-3/4)		1680/50	403	(400-1)
<b>C</b> CIRCLING**	1760-1 453 (500-1)		1820-1 1/2 513 (600-1 1/2)	1920-2 613 (700-2)	2300-3 993 (1000-3)



ENID, OKLAHOMA

36°20'N - 97°55'W

VANCE AFB (KEND)

Amdt 8 15AUG19

# RNAV (GPS) RWY 17C

SC-1, 09 SEP 2021 to 07 OCT 2021

SC-1, 09 SEP 2021 to 07 OCT 2021