

ENID, OKLAHOMA

RNAV (GPS) RWY 17R

20198

APCH CRS	Rwy Idg	9217
163°	TDZE	1287
	Arpt Elev	1307

AL-135 (USAF)

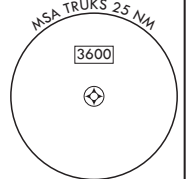
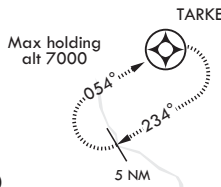
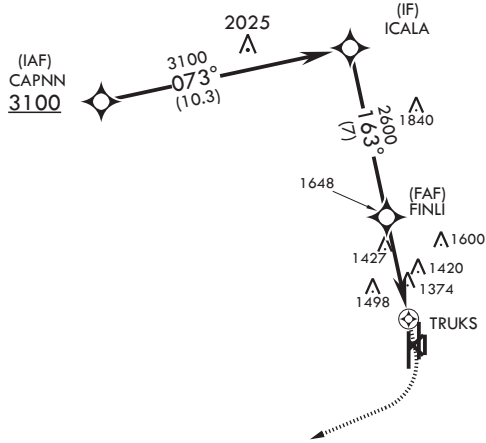
VANCE AFB (KEND)

<p>V * When ALS inop, increase CAT CDE vis to 1 1/8 miles. ** Circling not authorized at night to RWY 35R.</p>	<p>SALS</p>	<p>MISSED APPROACH: Climb to 1900, then climbing right turn to 4300 direct TARKE and hold.</p>
---	-------------	--

<p>ATIS★ 115.4 263.15</p>	<p>APP CON 125.45 388.2 EAST 126.75 346.325 WEST</p>	<p>TOWER★ 124.05 259.1</p>	<p>GND CON 121.8 289.4</p>	<p>CLNC DEL 225.4</p>
-------------------------------	--	--------------------------------	--------------------------------	---------------------------

DME/DME RNP-0.3 NA

FOR USE BY 71FTW AIRCRAFT ONLY

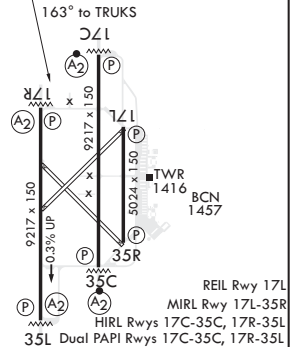


RADAR REQUIRED

1726

EMERG SAFE ALT 100 NM 4800

ICALA		1900		4300		TARKE		ELEV 1307		TDZE 1287	
3100		↑		↷		⊙		163° to TRUKS		⊘	
163°		2600		0.9 NM to TRUKS		TRUKS		9217 x 150		9217 x 150	
2.56° ≥ TCH 46		4.2 NM		.5				0.3% UP		35R	
CATEGORY		A		B		C		D		E	
LNAV MDA*		1680-1		393		(400-1)					
CIRCLING**		1760-1 453 (500-1)		1820-1 1/2 513 (600-1 1/2)		1920-2 613 (700-2)		2300-3 993 (1000-3)			



REIL Rwy 17L
MIRL Rwy 17L-35R
HIRL Rwys 17C-35C, 17R-35L
35L Dual PAPI Rwys 17C-35C, 17R-35L

ENID, OKLAHOMA

36°20'N - 97°55'W

VANCE AFB (KEND)

Amdt 5 15AUG19

RNAV (GPS) RWY 17R

SC-1, 09 SEP 2021 to 07 OCT 2021

SC-1, 09 SEP 2021 to 07 OCT 2021