

APCH CRS 003°	Rwy Idg 9217
	TDZE 1307
	Arpt Elev 1307

AL-135 (USAF)

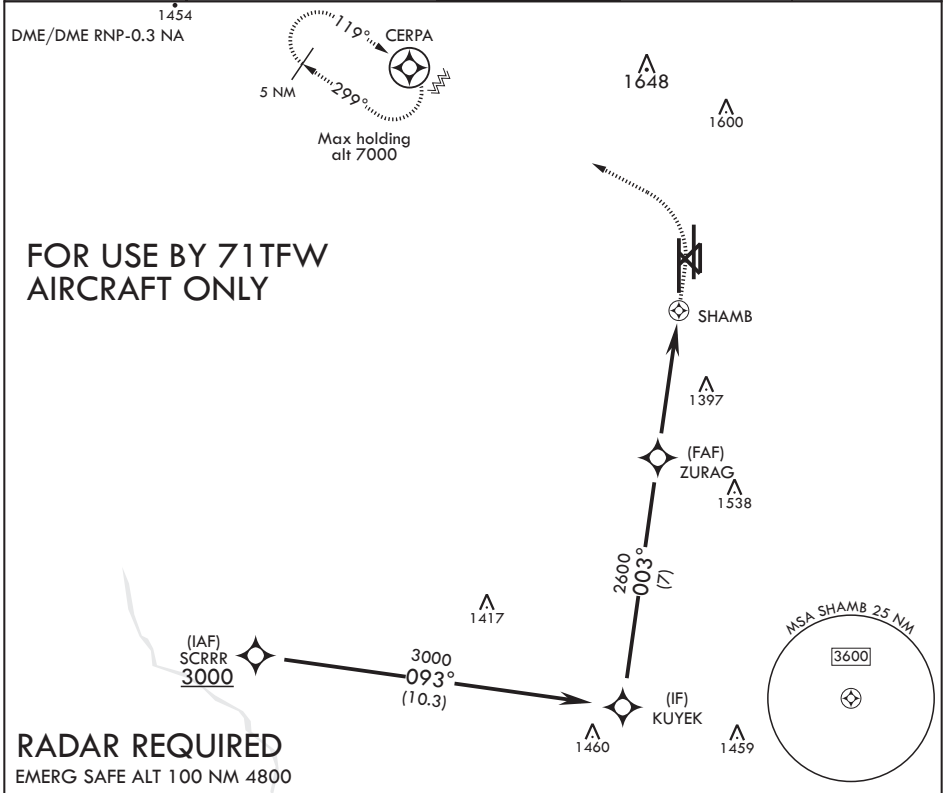
VANCE AFB (KEND)

▼ * When ALS inop, increase CAT AB vis to 1 mile, CAT CDE vis to 1 1/8 miles.
 * Circling not authorized at night to Rwy 35R.



MISSED APPROACH: Climb to 1900, then climbing left turn to 4300 direct CERPA and hold.

ATIS★ 115.4 263.15	APP CON 125.45 388.2 EAST 126.75 346.325 WEST	TOWER★ 124.05 259.1	GND CON 121.8 289.4	CLNC DEL 225.4
------------------------------	-------------------------------------------------------------------	-------------------------------	-------------------------------	--------------------------



RADAR REQUIRED

EMERG SAFE ALT 100 NM 4800

KUYEK 3000 003° 2.54° ≥ TCH 47 ZURAG 2600 0.7 NM to SHAMB SHAMB 4.1 NM .5	1900	4300	CERPA	ELEV 1307	TDZE 1307
	Dual PAPI Rws 17C-35C, 17R-35L 9217 x 150 9217 x 150 9217 x 150 502 x 150 35R 35C 0.3% DOWN 1363 35L 003° to SHAMB REIL Rwy 17L MIRL Rwy 17L-35R HIRL Rws 17C-35C, 17R-35L TWL 1416 BCN 1457				
CATEGORY	A	B	C	D	E
LNAV MDA*	1660-1		353	(400-1)	
C CIRCLING**	1760-1	453 (500-1)	1820-1 1/2 513 (600-1 1/2)	1920-2 613 (700-2)	2300-3 993 (1000-3)

SC-1, 09 SEP 2021 to 07 OCT 2021

SC-1, 09 SEP 2021 to 07 OCT 2021