

RNAV (GPS)-A

APCH CRS 314°	Rwy Idg TDZE Arprt Elev	N/A N/A 1307
-------------------------	-------------------------------	---

AL-135 (USAF)

VANCE AFB (KEND)

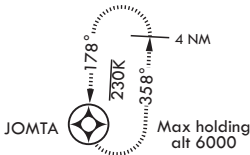
▼ * Circle to remain East of Rwy 35R/17L extended centerline unless directed otherwise by ATC. Circling not authorized at night to Rwy 35R.

MISSED APPROACH: Climb to 1900, then climbing right turn to 4300 direct JOMTA and hold.

ATIS* 115.4 263.15	APP CON 125.45 388.2 EAST 126.75 346.325 WEST	TOWER* 124.05 259.1	GND CON 121.8 289.4	CLNC DEL 225.4
------------------------------	---	-------------------------------	-------------------------------	--------------------------

DME/DME RNP-0.3 NA

FOR USE BY 71 FTW ACFT ONLY



2026

1840

1464

1809

1498

1369

1572

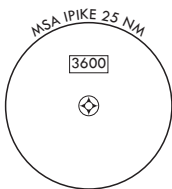
1727

1681

1470

1495

ENID WOODRING RGNL



IPIKE

(FAF) RHATT

1222

2800

(3-4)

(5-5)

134°

230K

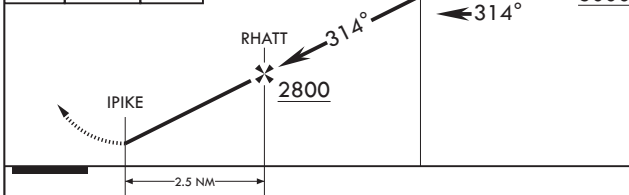
314°

(IAF/IF) TRHAP

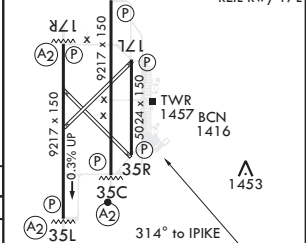
4 NM

Max holding alt 6000

EMERG SAFE ALT 100 NM 4800



ELEV 1307	HIRL Rwys 17C-35C, 17R-35L
	Dual PAPI Rwys 17C-35C, 17R-35L
	MIRL Rwy 17L-35R
	REIL Rwy 17L



CATEGORY	A	B	C	D
CIRCLING*	1760-4	453 (500-4)	NA	NA

RNAV (GPS)-A

SC-1, 09 SEP 2021 to 07 OCT 2021

SC-1, 09 SEP 2021 to 07 OCT 2021