

RNAV (GPS)-B

| | | |
|----------|------------|------|
| APCH CRS | Rwy ldg | N/A |
| 199° | TDZE | N/A |
| | Arprt Elev | 1307 |

AL-135 [USAF]

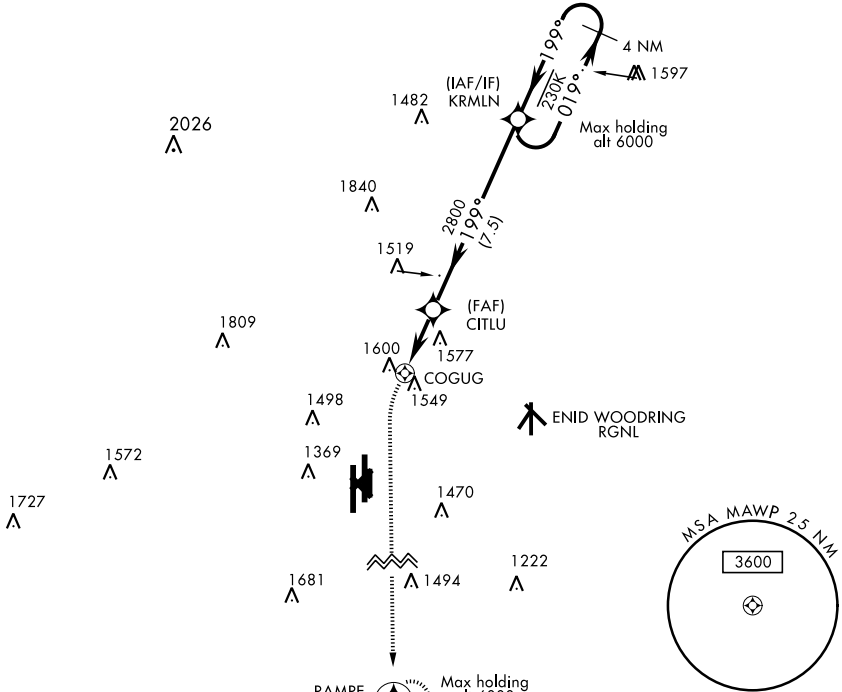
VANCE AFB (KEND)

* Circle to remain East of Rwy 35R/17L extended centerline unless directed otherwise by ATC. Circling not authorized at night to Rwy 35R.

MISSED APPROACH: Climbing left turn to 4000 direct to RAMPE and hold.

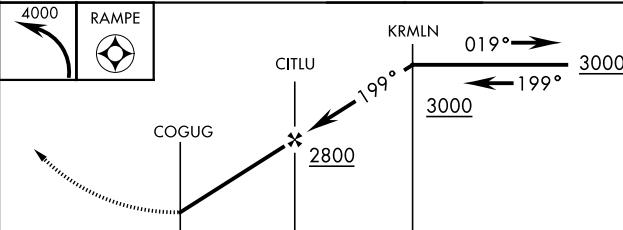
| | | | | |
|--------------|---------------------------------------|---------------|-------------|----------|
| ATIS ★ | VANCE APP CON | VANCE TOWER ★ | GND CON | CLNC DEL |
| 115.4 263.15 | 125.45 388.2 EAST 121.3 291.1 WEST | 124.05 259.1 | 121.8 289.4 | 225.4 |

DME/DME RNP-0.3 NA

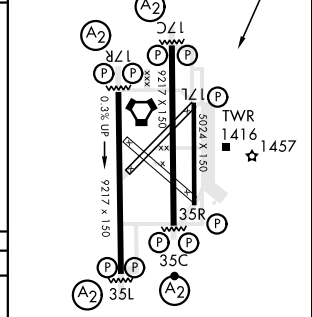


FOR USE BY 71 FTW ACFT ONLY

EMERG SAFE ALT 100 NM 4800 FROM COGUG



| | |
|---------------------------|----------------------|
| ELEV 1307 | 199° 5.8 NM from FAF |
| HIRL Rwy 17C-35C, 17R-35L | |
| MIRL Rwy 17L-35R | |
| REIL Rwy 17L | |



| | | | | | |
|---------------------|--------|-------------|----------------|---|---|
| CATEGORY | A | B | C | D | E |
| C CIRCLING * | 1880-4 | 573 (600-4) | NOT AUTHORIZED | | |

RNAV (GPS)-B

SC-1, 09 SEP 2021 to 07 OCT 2021

SC-1, 09 SEP 2021 to 07 OCT 2021