

ENID, OKLAHOMA

VOR/DME or TACAN RWY 17C

VORTAC END 115.4 Chan 101	APCH CRS 182°	Rwy Idg 9217 TDZE 1277 Arprt Elev 1307
---	-------------------------	---

AL-135 [USAF]

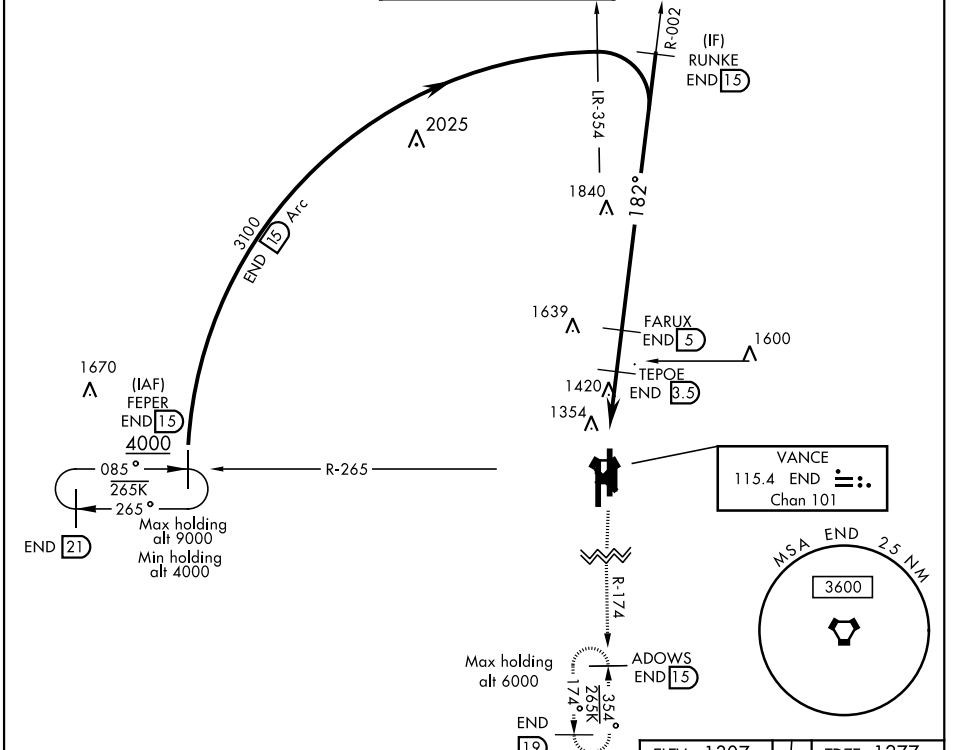
VANCE AFB (KEND)

▼ * When ALS inop, increase CAT AB RVR to 55 and vis to 1 1/2 miles.
CAT CDE RVR to 60 and vis to 1 1/2 miles.
** Circling not authorized at night to Rwy 35R.

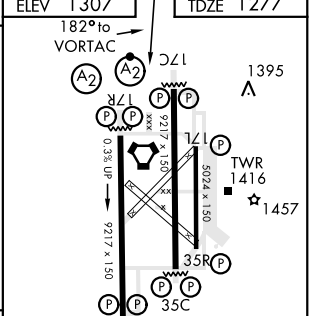
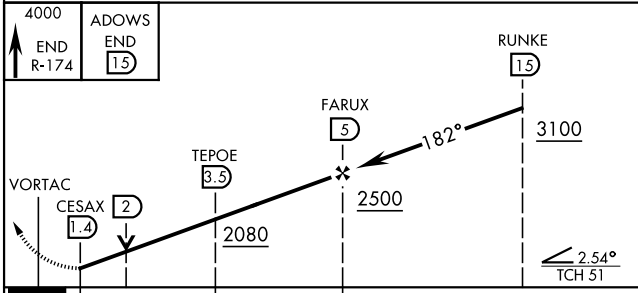
SALSF
(A2)

MISSED APPROACH: Climb to 4000, intercept
END VORTAC R-174 to ADOWS and hold.

ATIS * 115.4 263.15	VANCE APP CON 125.45 388.2 EAST 126.75 346.325 WEST	VANCE TOWER * 124.05 259.1	GND CON 121.8 289.4	CLNC DEL 225.4
-------------------------------	---	--------------------------------------	-------------------------------	--------------------------



EMERG SAFE ALT 100 NM 4800



CATEGORY	A	B	C	D	E
S-17C *	1680/40	403 (400-34)	1680/50	403 (400-1)	
CIRCLING **	1760-1	453 (500-1)	1820-1 1/2 513 (600-1 1/2)	1920-2 613 (700-2)	2300-3 993 (1000-3)

REIL Rwy 17L
MIRL Rwy 17L-35R
HIRL Rwy 17C-35C, 17R-35L

ENID, OKLAHOMA
Amdt 4 12SEP19

36° 20'N-97° 55'W

VANCE AFB (KEND)

VOR/DME or TACAN RWY 17C

SC-1, 09 SEP 2021 to 07 OCT 2021

SC-1, 09 SEP 2021 to 07 OCT 2021