

ENID, OKLAHOMA

VOR/DME or TACAN RWY 17R

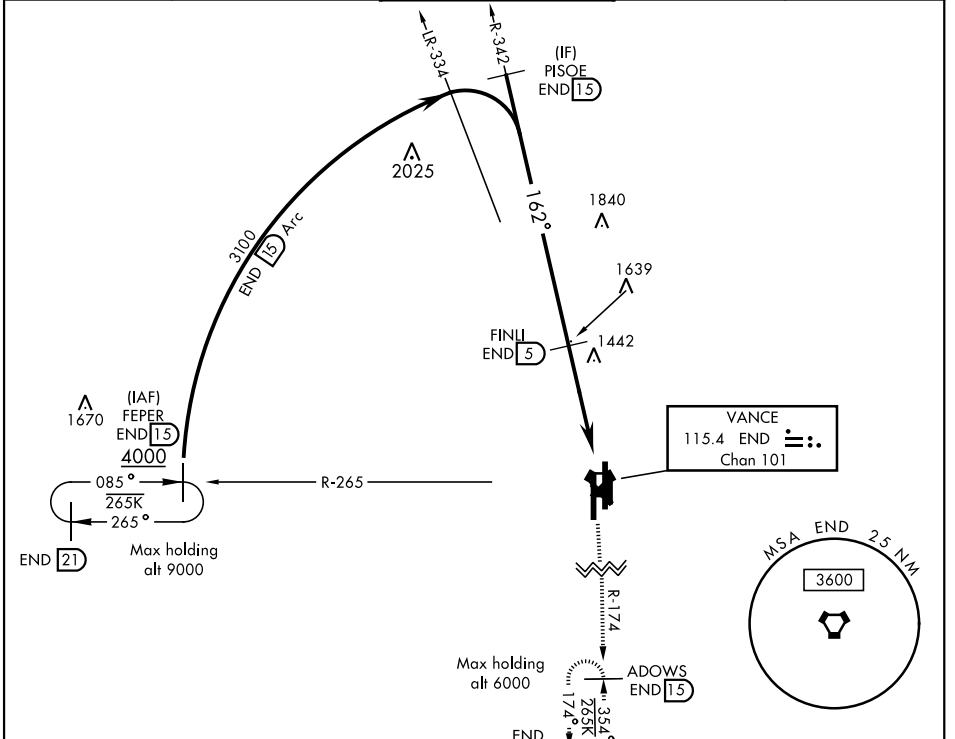
VORTAC END 115.4 Chan 101	APCH CRS 162°	Rwy Idg 9217 TDZE 1287 Arprt Elev 1307
---	-------------------------	---

AL-135 [USAF]

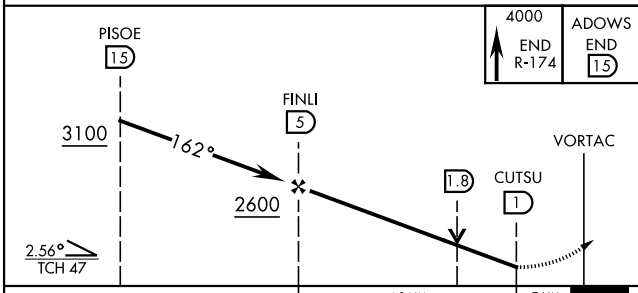
VANCE AFB (KEND)

* When ALS inop, increase CAT CDE vis to 1 1/4 miles.
 ** Circling not authorized at night to Rwy 35R.

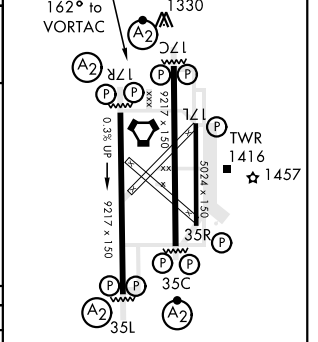
ATIS * 115.4 263.15	VANCE APP CON 125.45 388.2 EAST 126.75 346.325 WEST	VANCE TOWER * 124.05 259.1	GND CON 121.8 289.4	CLNC DEL 225.4
-------------------------------	---	--------------------------------------	-------------------------------	--------------------------



EMERG SAFE ALT 100 NM 4800



ELEV 1307	TDZE 1287
-----------	-----------



CATEGORY	A	B	C	D	E
S-17R *		1720-1	433	(500-1)	
** CIRCLING	1760-1	453 (500-1)	1820-1 1/2 513 (600-1 1/2)	1920-2 613 (700-2)	2300-3 993 (1000-3)

REIL Rwy 17L
 MRL Rwy 17L-35R
 HIRL Rwy 17C-35C, 17R-35L

ENID, OKLAHOMA

36°20'N-97°55'W

VANCE AFB (KEND)

Amdt 4 12SEP19
TERPS

VOR/DME or TACAN RWY 17R

SC-1, 09 SEP 2021 to 07 OCT 2021

SC-1, 09 SEP 2021 to 07 OCT 2021