

ENID, OKLAHOMA

VOR/DME or TACAN RWY 35C

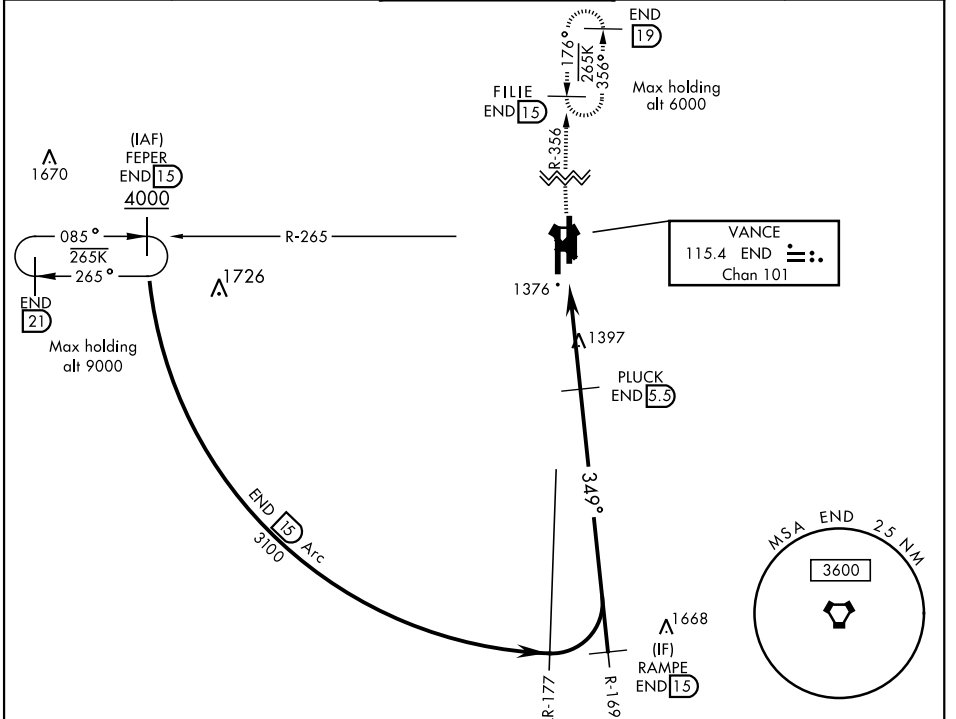
VORTAC END 115.4 Chan 101	APCH CRS 349°	Rwy Idg 9217 TDZE 1293 Arpt Elev 1307
---	-------------------------	--

AL-135 [USAF]

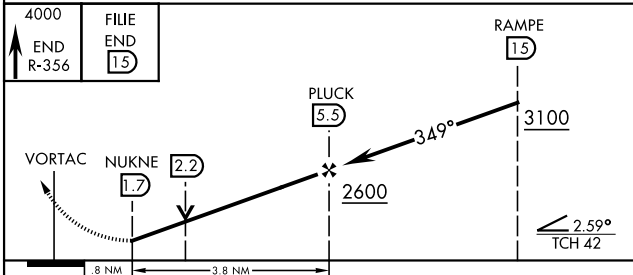
VANCE AFB (KEND)

<p>▼ * When ALS inop, increase CAT AB RVR to 55 and vis to 1 mile, CAT CDE RVR to 60 and vis to 1½ miles. ** Circling not authorized at night to Rwy 35R.</p>	<p>SALSF A2</p>	<p>MISSED APPROACH: Climb to 4000, intercept END VORTAC R-356 to FILE and hold.</p>
---	---------------------	---

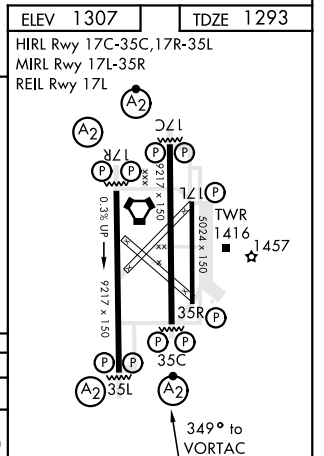
<p>ATIS ★ 115.4 263.15</p>	<p>VANCE APP CON 125.45 388.2 EAST 126.75 346.325 WEST</p>	<p>VANCE TOWER ★ 124.05 259.1</p>	<p>GND CON 121.8 289.4</p>	<p>CLNC DEL 225.4</p>
---------------------------------------	--	--	---------------------------------------	----------------------------------



EMERG SAFE ALT 100 NM 4800



CATEGORY	A	B	C	D	E
S-35C *	1680/40	387 (400-34)	1680/45	387 (400-7/8)	
CIRCLING **	1760-1	453 (500-1)	1820-1½ 513 (600-1½)	1920-2 613 (700-2)	2300-3 993 (1000-3)



ENID, OKLAHOMA
Amdt 4 12SEP19

36°20'N-97°55'W

VANCE AFB (KEND)

VOR/DME or TACAN RWY 35C

SC-1, 09 SEP 2021 to 07 OCT 2021

SC-1, 09 SEP 2021 to 07 OCT 2021