

ENID, OKLAHOMA

VOR/DME or TACAN RWY 35L

VORTAC END 115.4 Chan 101	APCH CRS 003°	Rwy Idg 9217 TDZE 1307 Arprt Elev 1307
---	-------------------------	---

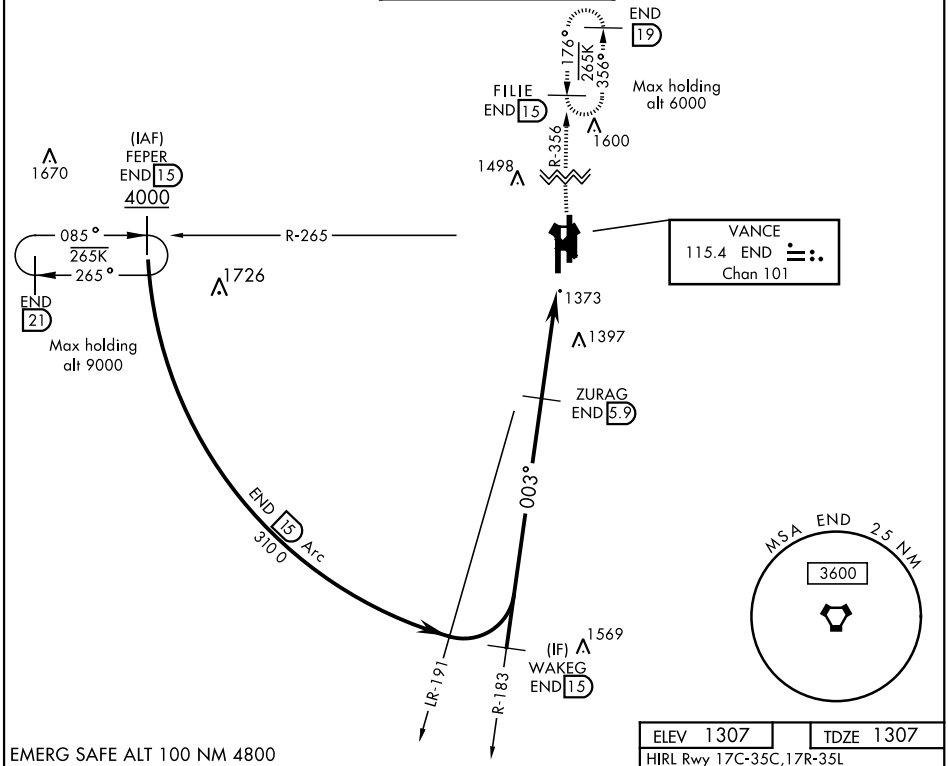
AL-135 [USAF]

VANCE AFB (KEND)

▼ * When ALS inop, increase CAT ABCDE vis to 1 mile.
** Circling not authorized at night to Rwy 35L.

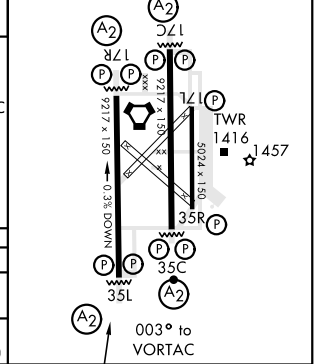
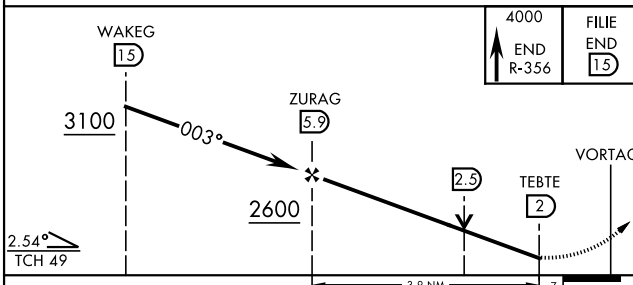
(A2) MISSED APPROACH: Climb to 4000, intercept END VORTAC R-356 and hold.

ATIS ★ 115.4 263.15	VANCE APP CON 125.45 388.2 EAST 126.75 346.325 WEST	VANCE TOWER ★ 124.05 259.1	GND CON 121.8 289.4	CLNC DEL 225.4
-------------------------------	---	--------------------------------------	-------------------------------	--------------------------



ELEV 1307	TDZE 1307
-----------	-----------

HIRL Rwy 17C-35C, 17R-35L
MIRL Rwy 17L-35R
REIL Rwy 17L



CATEGORY	A	B	C	D	E
S-35L*	1680-1		373	(400-1)	
C CIRCLING**	1760-1	453 (500-1)	1820-1½ 513 (600-1½)	1920-2 613 (700-2)	2300-3 993 (1000-3)

ENID, OKLAHOMA
Amdt 4 12SEP19

36° 20' N-97° 55' W

VANCE AFB (KEND)

VOR/DME or TACAN RWY 35L

SC-1, 09 SEP 2021 to 07 OCT 2021

SC-1, 09 SEP 2021 to 07 OCT 2021