


WAAS CH 86812 W24A	APP CRS 245°	Rwy Idg 7501 TDZE 730 Apt Elev 732
--	------------------------	---

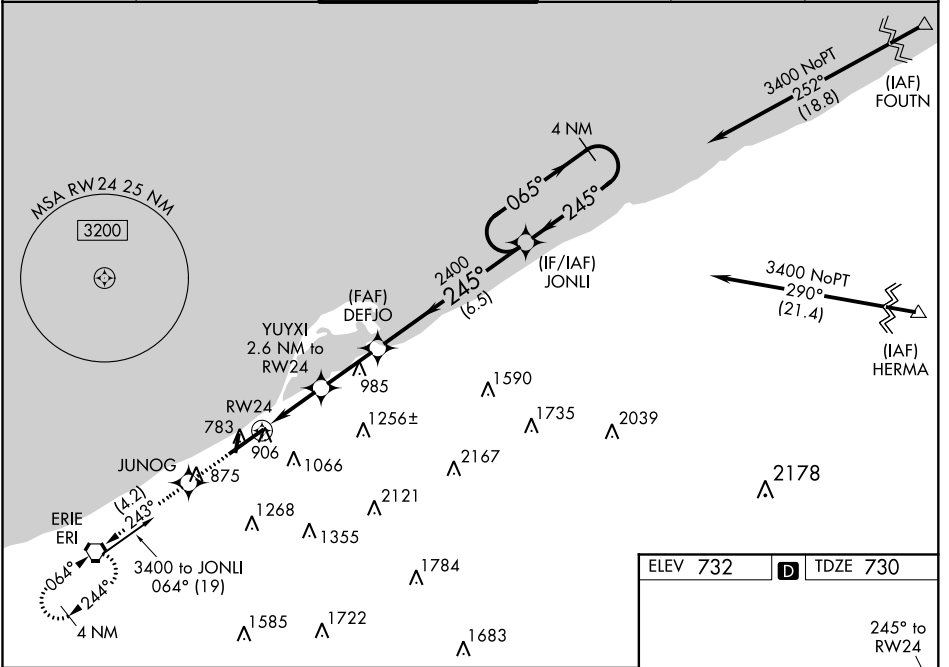
RNAV (GPS) RWY 24

ERIE INTL/TOM RIDGE FLD (ERI)

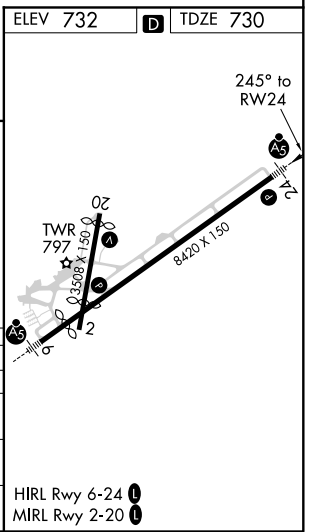
▼ Night landing: Rwy 2, 20 NA. Baro-VNAV NA when using Ashtabula, OH altimeter setting. For uncompensated Baro-VNAV systems, LNAV/VNAV NA below -19°C (-2°F) or above 54°C (130°F). DME/DME RNP-0.3 NA. VDP NA with Ashtabula, OH altimeter setting. When local altimeter setting not received, use Ashtabula, OH altimeter setting and increase all DA 96 feet, all MDA 100 feet and increase LPV all Cats visibility 1/8 mile, LNAV/VNAV all Cats visibility 3/8 mile, LNAV Cats C and D visibility 1/4 mile and Circling Cat C and D visibility 1/2 mile. For inop MALS/R when using Ashtabula, OH altimeter setting, increase LPV all Cats visibility to 1/8 mile.

MALS/R  MISSED APPROACH: Climb to 3000 direct JUNOG and on track 243° to ERI VORTAC and hold.

ATIS 120.35	BUFFALO APP CON* 121.0 257.8	ERIE TOWER* 118.1 (CTAF) 0 257.8	GND CON 121.9	CLNC DEL 126.8	UNICOM 122.95
-----------------------	--	--	-------------------------	--------------------------	-------------------------




3000	JUNOG	tr 243°	ERI	JONLI	4 NM Holding Pattern
*LNAV only.					
YUYXI 2.6 NM to RW24					
*1.2 NM to RW24					
*1600					
2400					
065° → 3400					
← 245°					
GP 3.00° TCH 55					
CATEGORY	A	B	C	D	
LPV DA		987-1/2	257 (300-1/2)		
LNAV/VNAV DA		1073-5/8	343 (400-5/8)		
LNAV MDA	1160-1/2	430 (500-1/2)	1160-3/4	430 (500-3/4)	
CIRCLING	1320-1 588 (600-1)	1340-1 608 (700-1)	1380-1 3/4 648 (700-1 3/4)	1380-2 648 (700-2)	



NE-4, 09 SEP 2021 to 07 OCT 2021

NE-4, 09 SEP 2021 to 07 OCT 2021

HIRL Rwy 6-24 
MIRL Rwy 2-20 