

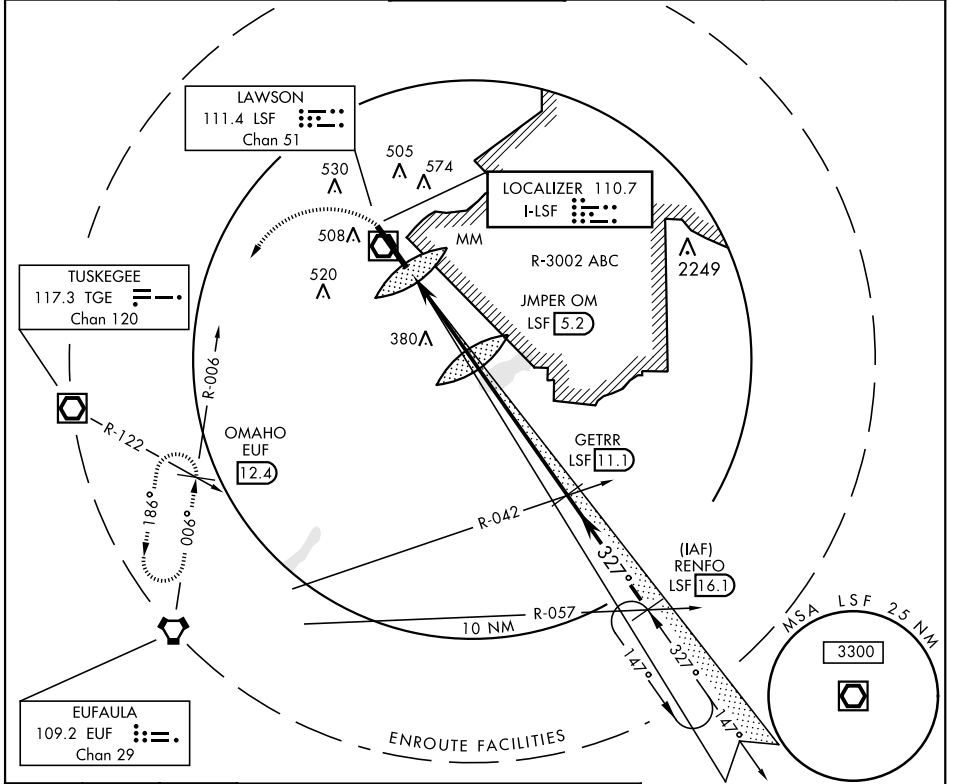
# ILS or LOC RWY 33

LOC I-LSF <b>110.7</b>	APCH CRS <b>327°</b>	Rwy ldg TDZE Arprt Elev <b>9300</b> <b>226</b> <b>227</b>
---------------------------	-------------------------	--

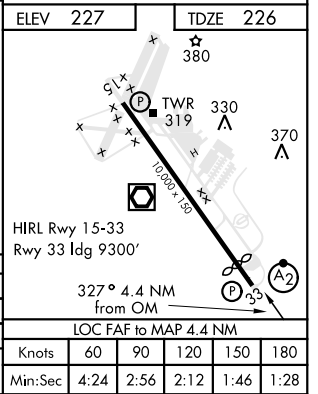
AL-146 [USA]

LAWSON AAF (KLSF)

<p>▼ * Circling not authorized E of Rwy 15-33.</p> <p>NA when tower closed.</p>		<p>SALSF</p>	<p>MISSED APPROACH: Climb to 1000 then climbing left turn to 2400 via EUF R-006 to OMAHO INT/EUF 12.4 DME and hold.</p>			
<p>ATIS ★</p> <p><b>134.375</b></p>	<p>ATLANTA APP CON</p> <p><b>125.5 323.1</b> blw 7000</p> <p><b>126.55 353.75</b> 7000 and abv</p>		<p>TOWER ★</p> <p><b>119.05 269.525</b></p>	<p>GND CON</p> <p><b>121.7 254.25</b></p>	<p>CLNC DEL</p> <p><b>121.7 251.15</b></p>	<p>ASR/PAR</p>



1000	2400	OMAHO EUF 12.4	JMPER OM 1454	GETRR 11.1 EUF R-042	RENFO EUF R-057
CATEGORY	A	B	C	D	
S-ILS 33	426/24	200 (200-½)	426/40	200 (200-¾)	
S-LOC 33	640/40	414 (500-¾)	640/50	414 (500-1)	
CIRCLING *	820-1	593 (600-1)	840-1 ¾	613 (700-1 ¾)	880-2
				653 (700-2)	



# ILS or LOC RWY 33

SE-4, 09 SEP 2021 to 07 OCT 2021

SE-4, 09 SEP 2021 to 07 OCT 2021