


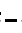
# JOE POOL THREE DEPARTURE

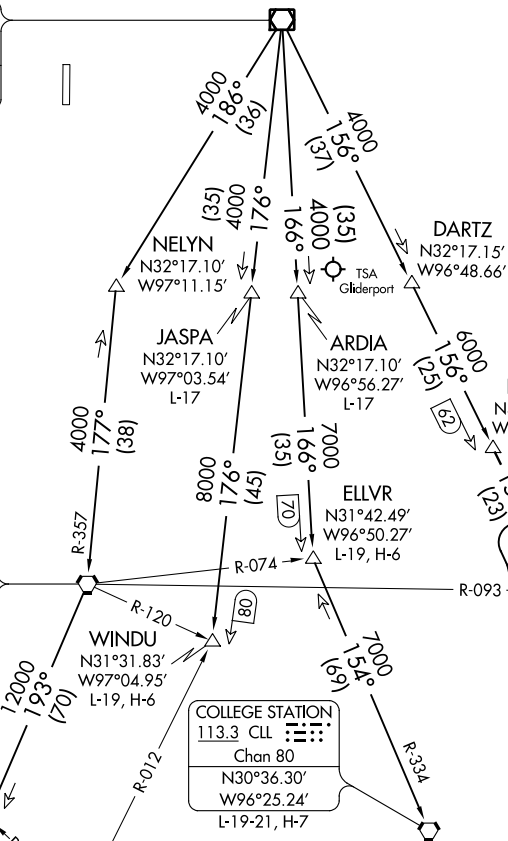
ATIS★  
351.675  
CLNC DEL  
126.4 254.325  
GND CON  
121.675 279.575  
NAVY FORT WORTH TOWER★  
120.95 269.325  
REGIONAL DEP CON  
125.8 257.95

### TAKEOFF MINIMUMS

Refer to appropriate military service directives.

MAVERICK  
113.1 TTT   
Chan 78  
N32°52.15'  
W97°02.43'

WACO  
115.3 ACT   
Chan 100  
N31°39.73'  
W97°16.14'  
L-19, H-6



NOTE: RADAR and DME required.

(NARRATIVE ON FOLLOWING PAGE)

NOTE: Chart not to scale.

# JOE POOL THREE DEPARTURE

SC-2, 09 SEP 2021 to 07 OCT 2021

SC-2, 09 SEP 2021 to 07 OCT 2021