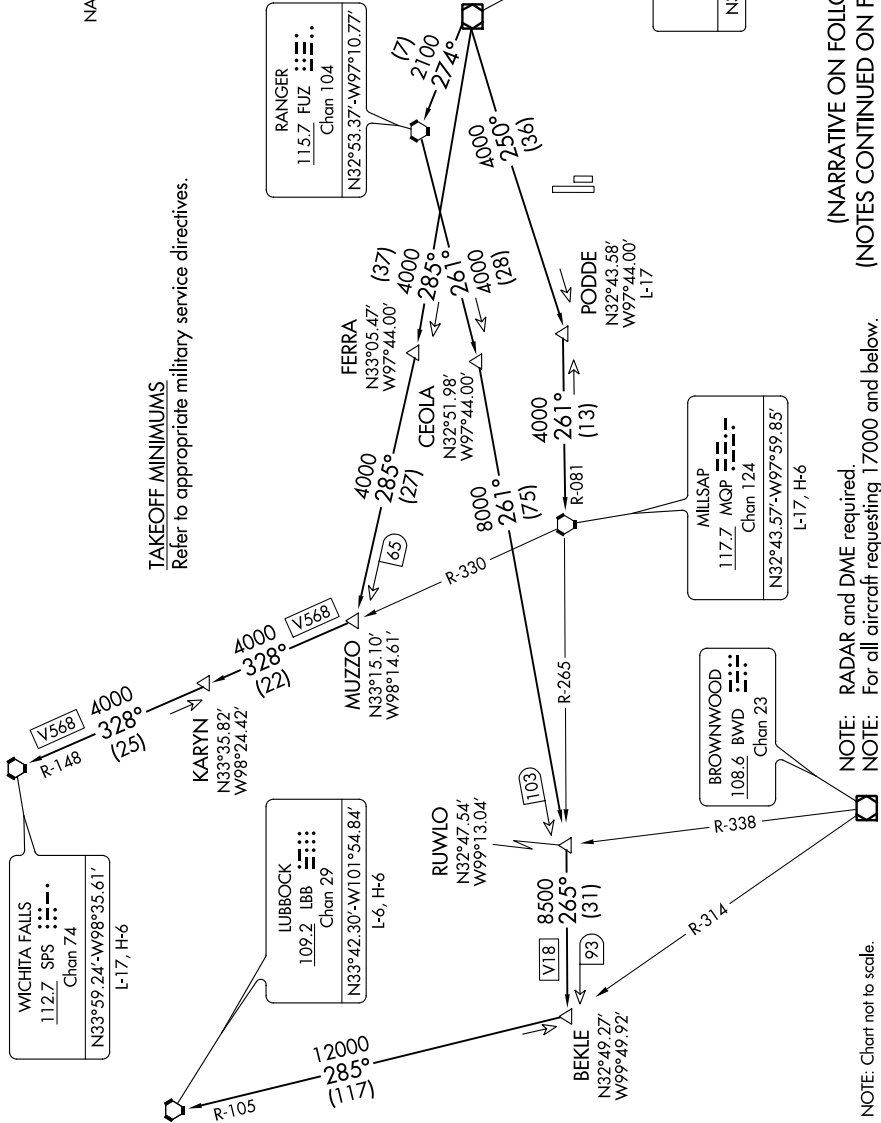


KINGDOM NINE DEPARTURE

ATIS*
 351.675
 CLINC DEL
 126.4 254.325
 GND CON
 121.675 279.575
 NAVY FORT WORTH TOWER*
 120.95 269.325
 REGIONAL DEP CON
 125.8 257.95

TAKEOFF MINIMUMS
 Refer to appropriate military service directives.



(NARRATIVE ON FOLLOWING PAGE)
 (NOTES CONTINUED ON FOLLOWING PAGE)

NOTE: RADAR and DME required.
 NOTE: For all aircraft requesting 17000 and below.

NOTE: Chart not to scale.

SC-2, 09 SEP 2021 to 07 OCT 2021

SC-2, 09 SEP 2021 to 07 OCT 2021

KINGDOM NINE DEPARTURE