

LOC/DME I-MED <b>111.1</b> Chan <b>48</b>	APP CRS <b>093°</b>	Rwy Idg <b>12246</b> TDZE <b>672</b> Apt Elev <b>680</b>
---	------------------------	--

# ILS RWY 10L (SA CAT I)

CHICAGO O'HARE INTL (ORD)

From GIBNS: RNAV-1 GPS required.  
 RNAV 1-GPS or RADAR required for procedure entry. DME or RADAR required.  
 Simultaneous approach authorized. Requires specific OPSPEC, MSPEC, or LOA approval and use of HUD to DH.

ALSF-2  
 MISSED APPROACH: Climb to 4000 on heading 093° and CGT VORTAC R-336 to CGT VORTAC and hold.

CHICAGO APP CON <b>119.0 292.125</b>	O'HARE TOWERS <b>128.15 348.0</b> (Rwy 9L/27R) <b>133.0 348.0</b> (10R/28L) <b>120.75 121.15 126.9</b> (CENTER)	GND CON (TWR NORTH) <b>124.125</b> (TWR SOUTH) <b>118.05</b> (ALL TWRs) <b>226.675</b>	(TWR CENTER) <b>121.75</b> (OBND) <b>121.9</b> (IBND)	CLNC DEL <b>121.6</b>
---	--	--	---	--------------------------

D-ATIS **135.4**  
**282.225**

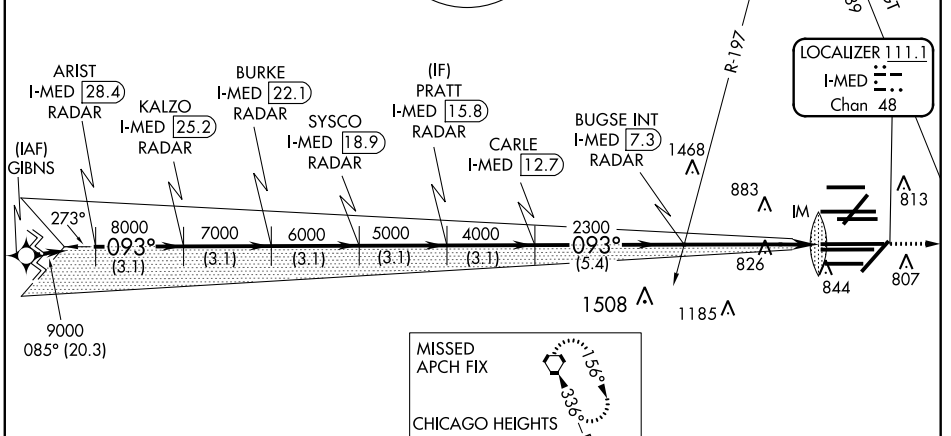
ALTERNATE MISSED APCH FIX

BLUTO DPA **41** RADAR

MSA ORD 25 NM  
3400

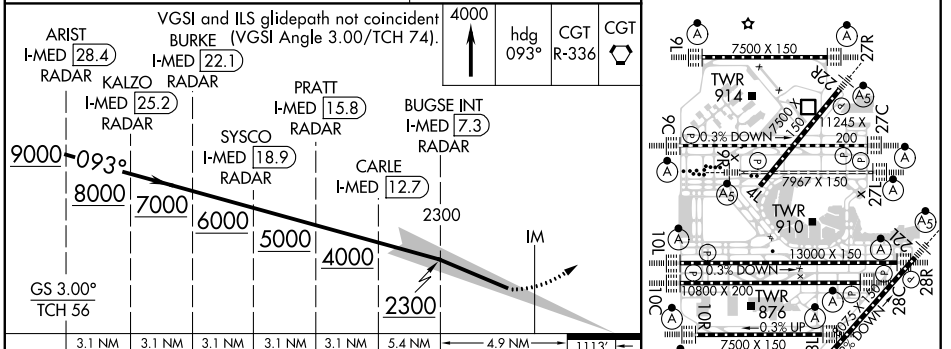
NORTHBROOK 113.0 OBK Chan 77

CPDLC

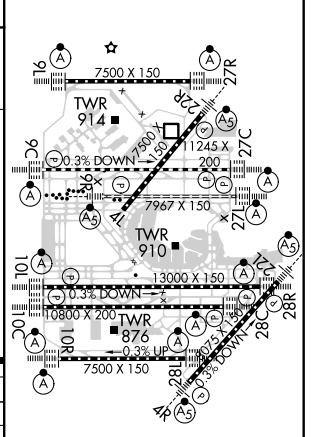


MISSED APCH FIX

CHICAGO HEIGHTS CGT **114.2** Chan 89



ELEV <b>680</b>	<b>D</b>	TDZE <b>672</b>
-----------------	----------	-----------------



CATEGORY	A	B	C	D
S-ILS 10L	RA 162/14		150 DA 822	

**SA CATEGORY I ILS - SPECIAL AIRCREW & AIRCRAFT CERTIFICATION REQUIRED**

HIRL all Rwys  
 TDZ/CL all Rwys except 4L