

LOC/DME I-IAC 110.5 Chan 42	APP CRS 273°	Rwy ldg 7782 TDZE 654 Apt Elev 680
---	------------------------	--

ILS RWY 27L (CAT II & III)

CHICAGO O'HARE INTL (ORD)

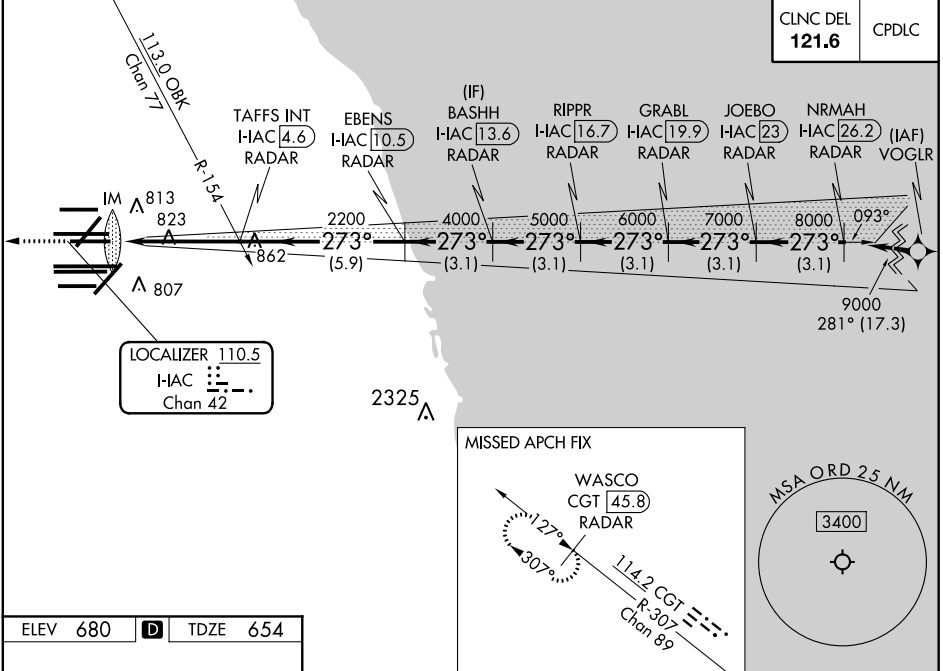
From VOGLR: RNAV 1-GPS required. Aircraft not GPS equipped - RADAR required for procedure entry. DME or RADAR required.



MISSED APPROACH: Climb to 1200 then climb to 4000 on heading 265° and on CGT VORTAC R-307 to WASCO/CGT 45.8 DME/RADAR and hold.

Simultaneous approach authorized.

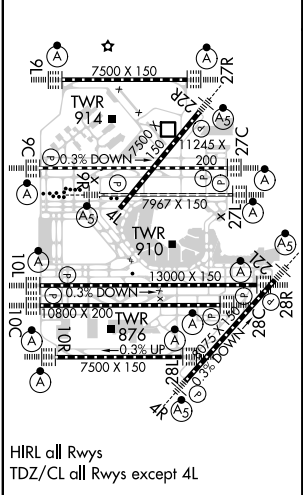
D-ATIS 135.4 282.225	CHICAGO APP CON 119.0 292.125	O'HARE TOWERS 128.15 348.0 (Rwy 9L/27R) 133.0 348.0 (10R/28L) 120.75 121.15 126.9 132.7 348.0 (CENTER)				GND CON (TWR NORTH) 124.125 (TWR SOUTH) 118.05 (ALL TWRs) 226.675	(TWR CENTER) 121.75 (OBND) 121.9 (IBND)
--	---	--	--	--	--	---	---



EC-3, 09 SEP 2021 to 07 OCT 2021

EC-3, 09 SEP 2021 to 07 OCT 2021

ELEV 680	D	TDZE 654
----------	----------	----------



1200	4000	CGT R-307	WASCO CGT 45.8 RADAR	VGSi and ILS glidepath not coincident (VGSi Angle 3.00/TCH 67).			
hdg 265°				BASHH I-HAC 13.6 RADAR	GRABL I-HAC 19.9 RADAR	NRMAH I-HAC 26.2 RADAR	
TAFS INT I-HAC 4.6 RADAR		EBENS I-HAC 10.5 RADAR	RIPPR I-HAC 16.7 RADAR	JOEBO I-HAC 23 RADAR			
H-IAC DME ANTENNA		IM 750		9000			
2200		4000		5000		6000	
750		4000		5000		6000	
1040'		4.7 NM		5.9 NM		3.1 NM	
CATEGORY A		CATEGORY B		CATEGORY C		CATEGORY D	
S-ILS 27L		CAT II RA 110/12		100 DA 754			
S-ILS 27L		CAT III		RVR 06			

CATEGORY II & III ILS - SPECIAL AIRCREW & AIRCRAFT CERTIFICATION REQUIRED