

LOC/DME I-VZE 108.95 Chan 26 (Y)	APP CRS 273°	Rwy ldg 10800 TDZE 651 Apt Elev 680
---	------------------------	--

ILS RWY 28C (CAT II & III)

CHICAGO O'HARE INTL (ORD)

From VOGLR: RNAV 1-GPS required.
Aircraft not GPS equipped - RADAR required for procedure entry.
DME or RADAR required.

ALSF-2

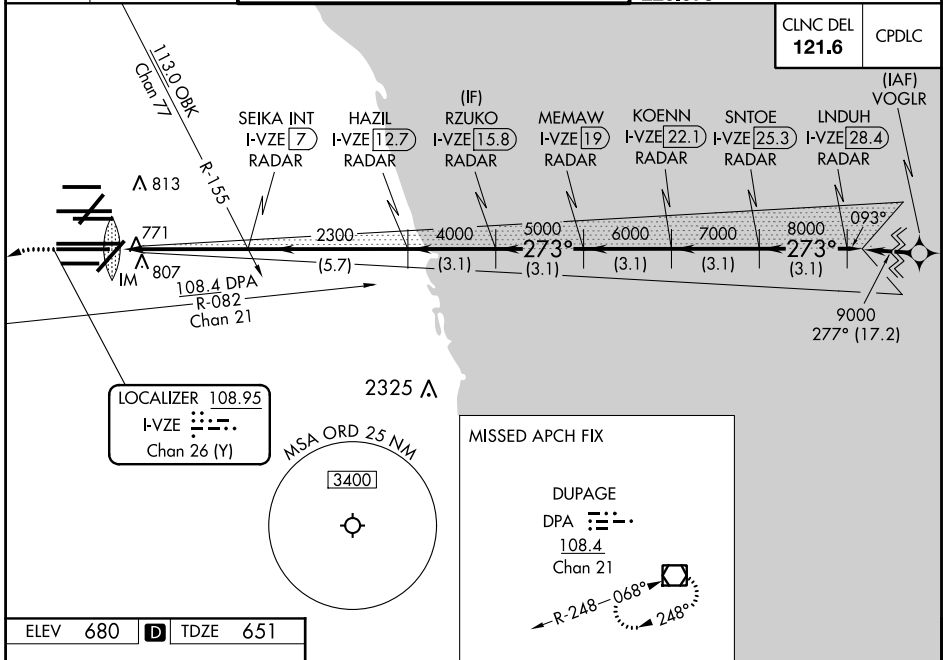


MISSED APPROACH: Climb to 1100 then climbing left turn to 4000 on heading 215° and DPA VOR/DME R-082 to DPA VOR/DME and hold.

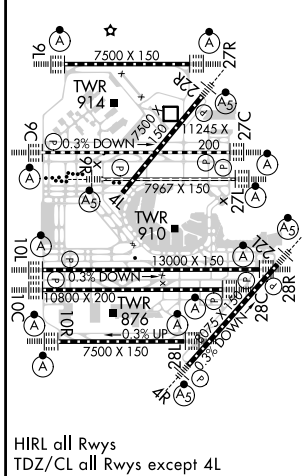
Simultaneous approach authorized. CAT II: RVR 1000 authorized with specific OPSPEC, MSPEC, or LOA approval and use of outland or HUD to touchdown.

D-ATIS 135.4 282.225	CHICAGO APP CON 119.0 292.125	O'HARE TOWERS 128.15 348.0 (Rwy 9L/27R) 133.0 348.0 (10R/28L) 120.75 121.15 126.9 132.7 348.0 (CENTER)	GND CON (TWR NORTH) 124.125 (TWR SOUTH) 118.05 (ALL TWRS) 226.675	(TWR CENTER) 121.75 (RBNB) 121.9
--	---	--	---	---

CNLC DEL 121.6	CPDLC (IAF) VOGLR
--------------------------	-----------------------------



ELEV 680	D	TDZE 651
-----------------	----------	-----------------



1100	4000	DPA	DPA	VGSI and ILS glidepath not coincident (VGSI Angle 3.00°/TCH 80).	LINDUH (I-VZE 28.4) RADAR
hdg 215°	R-082	<input checked="" type="checkbox"/>	<input type="checkbox"/>		
					RZUKO (I-VZE 15.8) RADAR
					KOENN (I-VZE 22.1) RADAR
					SNTOE (I-VZE 25.3) RADAR
					MEMAW (I-VZE 19) RADAR
					HAZIL (I-VZE 12.7) RADAR
					SEIKA INT (I-VZE 7) RADAR
					IM 2300
					750
					2300
					4000
					5000
					6000
					7000
					8000
					9000
					GS 3.00° TCH 55
					5 NM
					5.7 NM
					3.1 NM
					3.1 NM
					3.1 NM
					3.1 NM
					3.1 NM
CATEGORY	A	B	C	D	
S-ILS 28C	CAT II RA 105/12 100 DA 751				
S-ILS 28C	CAT III RVR 06				

CATEGORY II & III ILS - SPECIAL AIRCREW & AIRCRAFT CERTIFICATION REQUIRED

EC-3, 09 SEP 2021 to 07 OCT 2021

EC-3, 09 SEP 2021 to 07 OCT 2021