

|  |                        |                             |   |
|--|------------------------|-----------------------------|---|
| LOC/DME I-VQX<br><b>110.75</b><br>Chan 44(Y) | APP CRS<br><b>274°</b> | Rwy ldg<br>TDZE<br>Apt Elev | <b>7500</b><br><b>667</b><br><b>680</b> |
|--|------------------------|-----------------------------|---|

# ILS RWY 28L (SA CAT I)

CHICAGO O'HARE INTL (ORD)

From VOGLR: RNAV 1-GPS required.

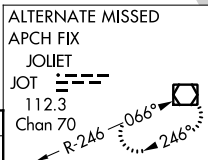
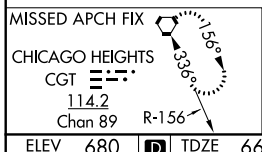
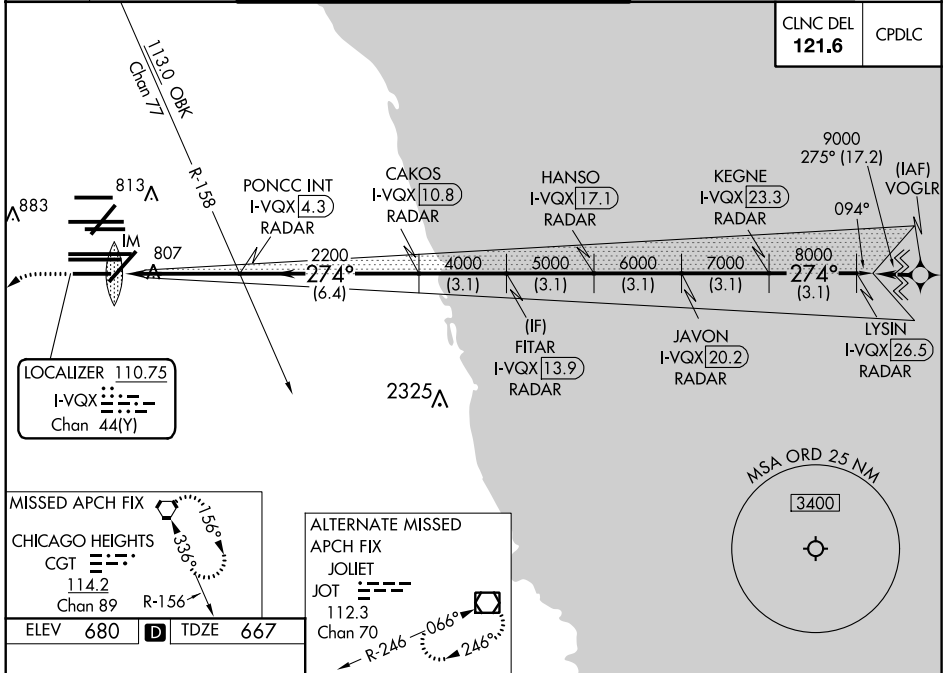
Aircraft not GPS equipped - RADAR required for procedure entry. DME or RADAR required.

ALSIF-2

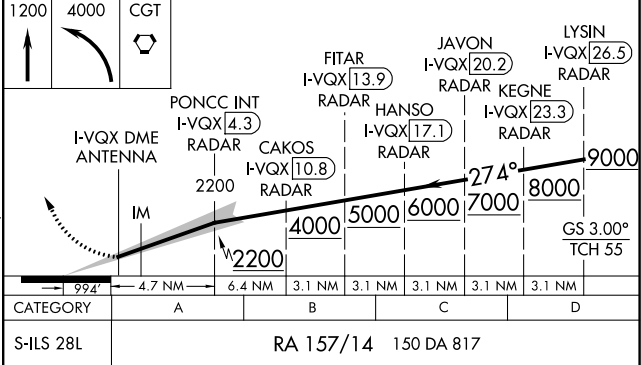
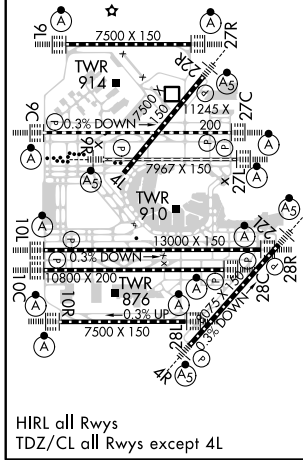
MISSED APPROACH: Climb to 1200 then climbing left turn to 4000 direct CGT VORTAC and hold.

Simultaneous approach authorized.  
Requires specific OPSPEC, MSPEC, or LOA approval and use of HUD to DH.

|                        |   |  |                                       |                                      |
|------------------------|---|--|---------------------------------------|--------------------------------------|
| D-ATIS<br><b>135.4</b> | CHICAGO APP CON<br><b>119.0 292.125</b> | O'HARE TOWERS<br><b>128.15 348.0</b> (Rwy 9L/27R) <b>133.0 348.0</b> (10R/28L) | GND CON (TWR NORTH)<br><b>124.125</b> | (TWR CENTER)<br><b>121.75</b> (OBND) |
| <b>282.225</b>         |   | <b>120.75 121.15 126.9 132.7 348.0</b> (CENTER)                                | <b>118.05</b> (TWR SOUTH)             | <b>121.9</b> (IBND)                  |
|                        |   |  | <b>226.675</b> (ALL TWRs)             |                                      |



|          |   |          |
|----------|---|----------|
| ELEV 680 | D | TDZE 667 |
|----------|---|----------|



SA CATEGORY I ILS-SPECIAL AIRCREW & AIRCRAFT CERTIFICATION REQUIRED

RA 157/14 150 DA 817

EC-3, 09 SEP 2021 to 07 OCT 2021

EC-3, 09 SEP 2021 to 07 OCT 2021