

LOC/DME I-SXH 108.95 Chan 26(Y)	APP CRS 093°	Rwy Ldg TDZE 669 Apt Elev 680
--	------------------------	---

ILS or LOC RWY 10C

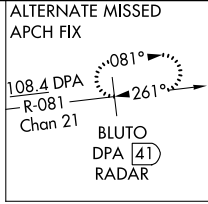
CHICAGO O'HARE INTL (ORD)

From GIBNS: RNAV-1 GPS required.
 RNAV 1-GPS or RADAR required for procedure entry. DME or RADAR required.
 Simultaneous approach authorized.

ALSIF-2
 MISSED APPROACH: Climb to 4000 on heading 093° and CGT VORTAC R-336 to CGT VORTAC and hold.

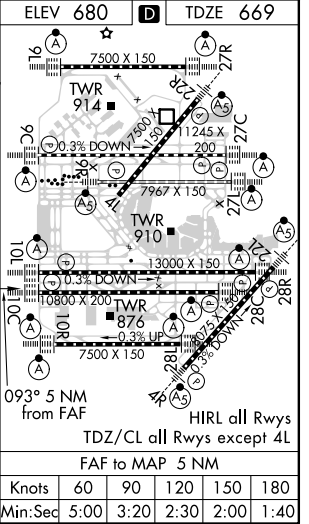
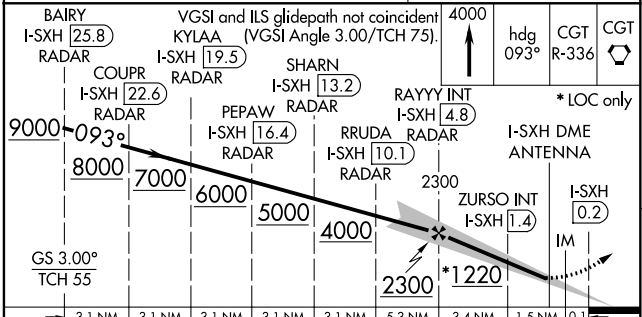
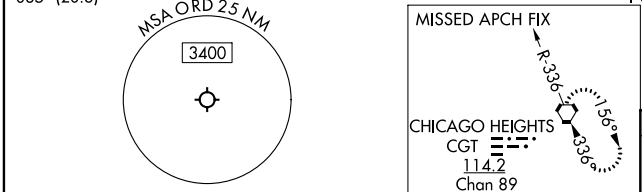
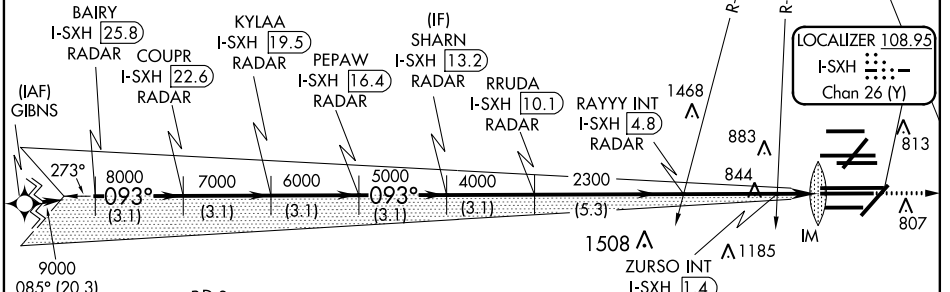
CHICAGO APP CON 119.0 292.125	O'HARE TOWERS Rwy 9L/27R 128.15 348.0 (110R/28L) 120.75 121.15 126.9 132.7 348.0 (CENTER)	GND CON (TWR NORTH) 124.125 (TWR SOUTH) 118.05 (ALL TWRs) 226.675	(TWR CENTER) 121.75 (OBND) 121.9 (IBND)	CLNC DEL 121.6
---	---	---	---	--------------------------

D-ATIS
135.4
282.225



NORTHBROOK
113.0 OBK
Chan 77

CPDLC



3.1 NM	3.1 NM	3.1 NM	3.1 NM	3.1 NM	5.3 NM	3.4 NM	1.5 NM	0.1 NM
CATEGORY	A		B		C		D	
S-ILS 10C	869/18 200 (200-½)							
S-LOC 10C	1220/24		551 (600-½)		1220/60		551 (600-1¼)	
ZURSO FIX MINIMUMS (DUAL VOR RECEIVERS OR DME REQUIRED)								
S-LOC 10C	1100/24		431 (500-½)		1100/40		431 (500-¾)	

EC-3, 09 SEP 2021 to 07 OCT 2021

EC-3, 09 SEP 2021 to 07 OCT 2021