

| | | | |
|---|------------------------|---|--------------|
| LOC/DME I-MED 111.1 Chan 48 | APP CRS 093° | Rwy Ldg TDZE 672 Apt Elev 680 | 12246 |
|---|------------------------|---|--------------|

ILS or LOC RWY 10L

CHICAGO O'HARE INTL (ORD)

From GIBNS: RNAV-1 GPS required. ALSF-2 (A) MISSED APPROACH: Climb to 4000 on heading 093° and CGT VORTAC R-336 to CGT VORTAC and hold.

RNAV 1-GPS or RADAR required for procedure entry. DME or RADAR required.

Simultaneous approach authorized.

| | | | | |
|---|--|--|---|--------------------------|
| CHICAGO APP CON 119.0 292.125 | O'HARE TOWERS 128.15 348.0 (Rwy 9L/27R) 133.0 348.0 (10R/28L) 126.9 348.0 (CENTER) | GND CON (TWR CENTER) 124.125 (TWR NORTH) 118.05 (TWR SOUTH) 226.675 (ALL TWRs) | (TWR CENTER) 121.75 (OBND) 121.9 (IBND) | CLNC DEL 121.6 |
|---|--|--|---|--------------------------|

D-ATIS **135.4**
282.225

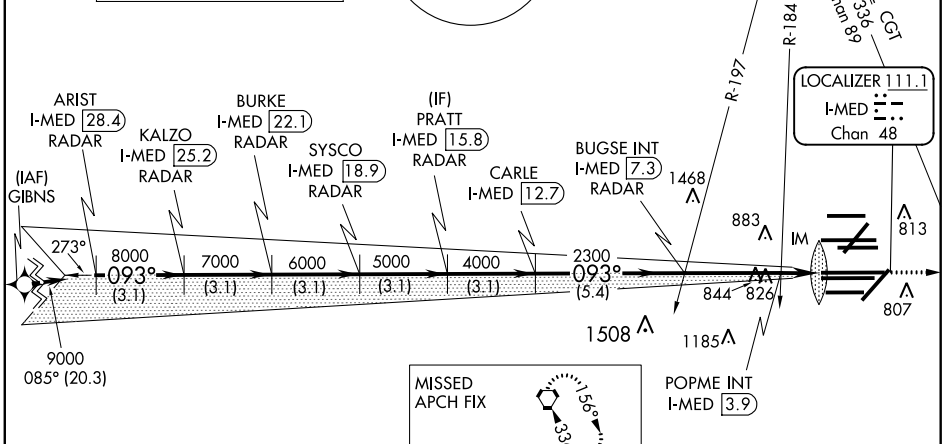
ALTERNATE MISSED APCH FIX

108.4 DPA $\frac{3}{4}$ 261° -R-081
Chan 21
BLUTO DPA $\frac{41}{1}$ RADAR

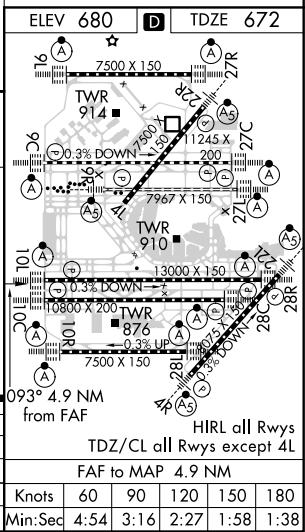
MSA ORD 2.5 NM
3400

NORTHBROOK 113.0 OBK Chan 77

CPDLC



| | | | | | | |
|---|--------------------------|--------------------------|-----------------------------|--------------------------|-----------------------|-------------|
| ARIST I-MED [28.4] RADAR | BURKE I-MED [22.1] RADAR | PRATT I-MED [15.8] RADAR | BUGSE INT I-MED [7.3] RADAR | CARLE I-MED [12.7] RADAR | POPME INT I-MED [3.9] | I-MED [2.4] |
| 3.1 NM | 3.1 NM | 3.1 NM | 3.1 NM | 3.1 NM | 5.4 NM | 3.4 NM |
| *LOC only. | | | | | | |
| GS 3.00° TCH 56 | 4000 | | hdg 093° | CGT R-336 | CGT | |
| CATEGORY | A | | B | | C | |
| S-ILS 10L | 872/18 | | 200 (200-½) | | | |
| S-LOC 10L | 1200/24 528 (600-½) | | 1200/55 528 (600-1) | | | |
| POPME FIX MINIMUMS (DUAL VOR RECEIVERS OR DME REQUIRED) | | | | | | |
| S-LOC 10L | 1080/24 408 (400-½) | | 1080/40 408 (400-¾) | | | |



EC-3, 09 SEP 2021 to 07 OCT 2021

EC-3, 09 SEP 2021 to 07 OCT 2021