

LOC I-LQQ	APP CRS	Rwy ldg TDZE	8075 654
110.1	225°	Apt Elev	680

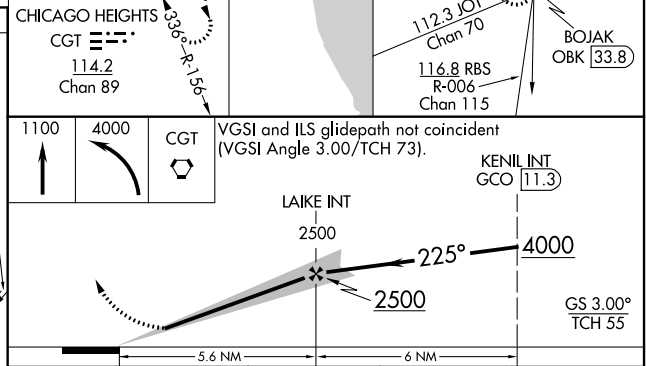
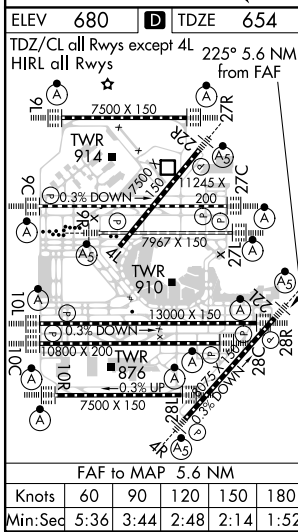
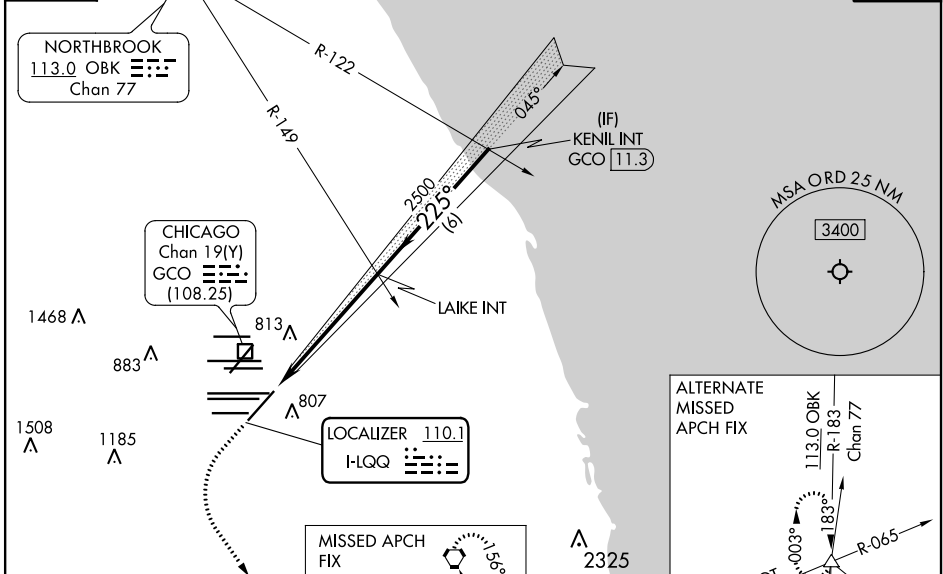
ILS or LOC RWY 22L

CHICAGO O'HARE INTL (ORD)

RADAR required for procedure entry.		MALSR	MISSED APPROACH: Climb to 1100 then climbing left turn to 4000 direct CGT VORTAC and hold.
Simultaneous approach authorized.			

CHICAGO APP CON	O'HARE TOWERS	GND CON	(TWR CENTER)	CLNC DEL
119.0 292.125	128.15 348.0 (Rwy 9L/27R) 133.0 348.0 (10R/28L)	124.125 (TWR NORTH) 118.05 (TWR SOUTH) 226.675 (ALL TWRs)	121.75 (OBND) 121.9 (IBND)	121.6
	120.75 121.15 126.9 132.7 348.0 (CENTER)			

D-ATIS 135.4 282.225	CPDLC
--	-------



CATEGORY	A	B	C	D
S-ILS 22L	854/18		200 (200-½)	
S-LOC 22L	1120/24	466 (500-½)	1120/50	466 (500-1)
CIRCLING	1220-1	540 (600-1)	1220-1½ 540 (600-½)	1460-2½ 780 (800-2½)

EC-3, 09 SEP 2021 to 07 OCT 2021

EC-3, 09 SEP 2021 to 07 OCT 2021