

ILS PRM RWY 28C (CAT II & III)
(CLOSE PARALLEL)
CHICAGO O'HARE INTL (ORD)

LOC/DME I-VZE 108.95 Chan 26 (Y)	APP CRS 273°	Rwy ldg 10800 TDZE 651 Apt Elev 680
---	-------------------------------	---

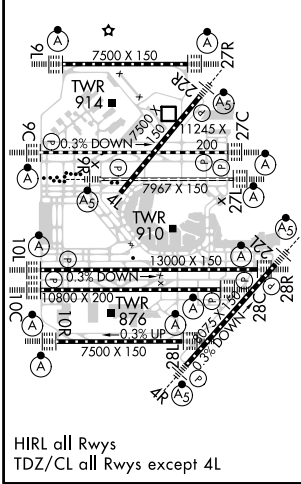
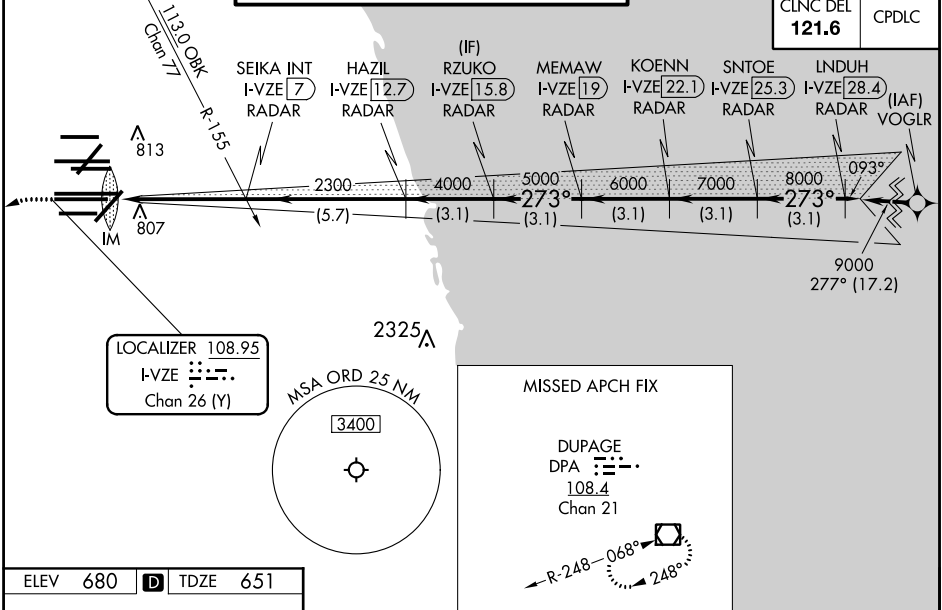
Aircraft not GPS equipped - RADAR required for procedure entry. DME or RADAR required. From VOGLR: RNAV 1-GPS required.

Simultaneous approach authorized. Use of FD or AP required during simultaneous operations. Dual VHF comm required. See additional requirements on AAUP. CAT II: RVR 1000 authorized with specific OPSPEC, MSPEC, or LOA approval and use of autoland or HUD to touchdown.

ALSF-2

MISSED APPROACH: Climb to 1100 then climbing left turn to 4000 on heading 215° and DPA VOR/DME R-082 to DPA VOR/DME and hold.

D-ATIS 135.4 282.225	CHICAGO APP CON 119.0 292.125	O'HARE TOWERS 128.15 348.0 (Rwy 9L/27R) 133.0 348.0 (10R/28L) 120.75 121.15 126.9 132.7 348.0 (CENTER) PRM 119.625	GND CON (TWR CENTER) 124.125 (TWR NORTH) 121.75 (OBND) 118.05 (TWR SOUTH) 121.9 (IBND) 226.675 (ALL TWRS)
---	--	--	--



ELEV 680 D TDZE 651	1100 4000 hdg 215° DPA R-082	DPA <input checked="" type="checkbox"/> VGSI and ILS glidepath not coincident (VGSI Angle 3.00/TCH 80).		
SEIKA INT I-VZE 7 RADAR	HAZIL I-VZE 12.7 RADAR	RZUKO I-VZE 15.8 RADAR		
MEMAW I-VZE 19 RADAR	KOENN I-VZE 22.1 RADAR	SNTOE I-VZE 25.3 RADAR		
LNDUH I-VZE 28.4 RADAR				
2300	4000	5000		
6000	7000	8000		
9000	GS 3.00° TCH 55			
---1044'--- 5 NM --- 5.7 NM --- 3.1 NM 3.1 NM 3.1 NM 3.1 NM 3.1 NM ---				
CATEGORY	A	B	C	D
S-ILS 28C	CAT II RA 105/12 100 DA 751			
S-ILS 28C	CAT III RVR 06			

CATEGORY II & III ILS - SPECIAL AIRCREW & AIRCRAFT CERTIFICATION REQUIRED

ILS PRM RWY 28C (CAT II & III) (CLOSE PARALLEL)

EC-3, 09 SEP 2021 to 07 OCT 2021