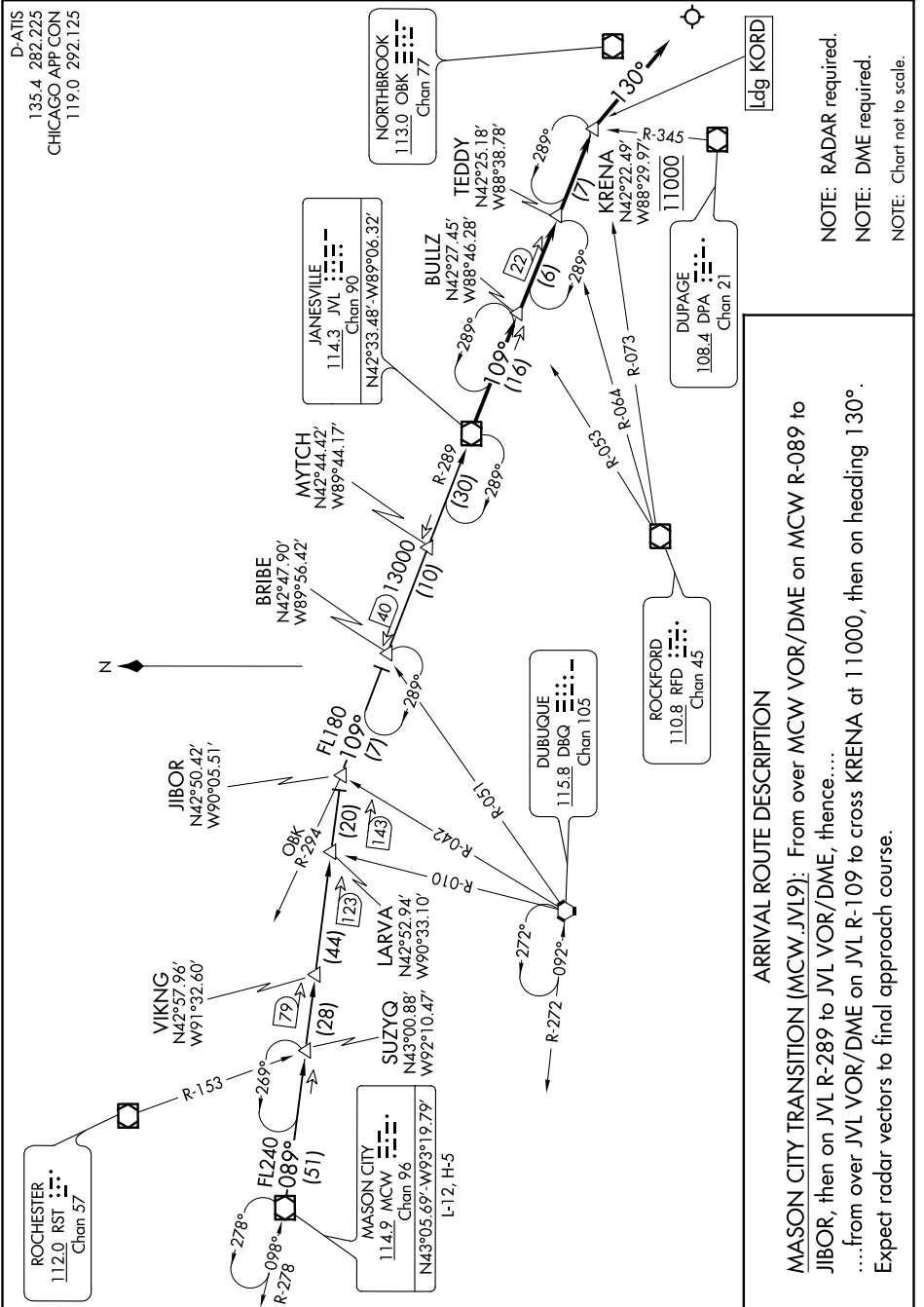


D-ATIS  
135.4 282.225  
CHICAGO APP CON  
119.0 292.125

EC-3, 09 SEP 2021 to 07 OCT 2021



NOTE: RADAR required.  
NOTE: DME required.  
NOTE: Chart not to scale.

ARRIVAL ROUTE DESCRIPTION

MASON CITY TRANSITION (MCW.JVL9): From over MCW VOR/DME on MCW R-089 to JIBOR, then on JVL R-289 to JVL VOR/DME, thence...  
...from over JVL VOR/DME on JVL R-109 to cross KRENA at 11000, then on heading 130°. Expect radar vectors to final approach course.

EC-3, 09 SEP 2021 to 07 OCT 2021