

WAAS CH <b>48904</b> <b>W10A</b>	APP CRS <b>093°</b>	Rwy Idg <b>12246</b> TDZE <b>672</b> Apt Elev <b>680</b>
--	------------------------	--

# RNAV (GPS) RWY 10L

CHICAGO O'HARE INTL (ORD)

RADAR required for procedure entry. RNP APCH.

▼ For uncompensated Baro-VNAV systems, LNAV/VNAV NA below -19°C or above 54°C. Simultaneous approach authorized. LNAV procedure NA during simultaneous operations. Use of FD or AP providing RNAV track guidance required during simultaneous operations.

ALSIF-2

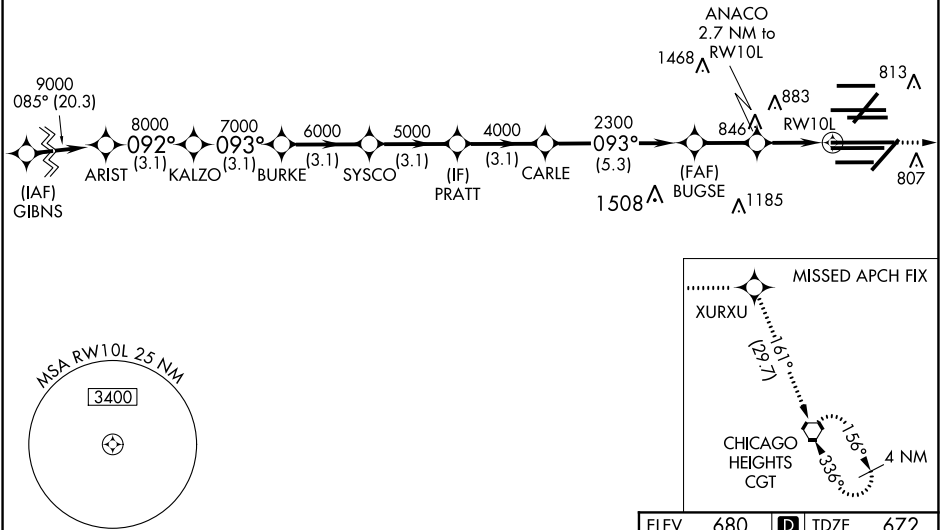


MISSED APPROACH: Climb to 4000 direct XURXU and on track 161° to CGT VORTAC and hold.

D-ATIS <b>135.4</b> <b>282.225</b>	CHICAGO APP CON <b>119.0 292.125</b>	O'HARE TOWERS <b>128.15 348.0</b> (Rwy 9L/27R) <b>133.0 348.0</b> (110R/28L) <b>120.75 121.15 126.9 132.7 348.0</b> (CENTER)				GND CON (TWR NORTH) <b>124.125</b> (TWR SOUTH) <b>118.05</b> (ALL TWRS) <b>226.675</b>	(TWR CENTER) <b>121.75</b> (OBND) (IBND) <b>121.9</b>
--	---	---	--	--	--	---	--

CLNC DEL  
**121.6**

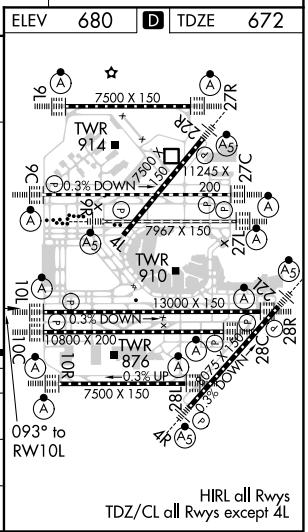
CPDLC



EC-3, 09 SEP 2021 to 07 OCT 2021

EC-3, 09 SEP 2021 to 07 OCT 2021

VGSi and RNAV glidepath not coincident (VGSi Angle 3.00/TCH 74).					4000	XURXU	tr 161°	CGT
ARIST 9000 092°					* LNAV only.			
KALZO 8000 093°					ANACO 2.7 NM to RWY 10L			
BURKE 7000					* 1.2 NM to RWY 10L			
SYSCO 6000					RWY 10L			
PRATT 5000					2300 * 1580			
CARLE 4000					2300			
GP 3.00° TCH 56					1.5 1.2			
CATEGORY	A		B		C		D	
LPV DA	872/18		200 (200-½)					
LNAV/VNAV DA	1062/35		390 (400-¾)					
LNAV MDA	1120/24		448 (500-½)		1120/45		448 (500-¾)	



HIRL all Rwys  
TDZ/CL all Rwys except 4L