


WAAS CH <b>69508</b> <b>W27B</b>	APP CRS <b>273°</b>	Rwy Idg TDZE Apt Elev	<b>7500</b> <b>664</b> <b>680</b>
--	------------------------	-----------------------------	---

# RNAV (GPS) RWY 27R

CHICAGO O'HARE INTL (ORD)

RNP APCH.  
RADAR required for procedure entry.

ALSIF-2  MISSED APPROACH: Climb to 1100 then climbing right turn to 4000 direct OBK VOR/DME and hold, continue climb-in-hold to 4000.

Simultaneous approach authorized. LNAV procedure NA during simultaneous operations. Use of FD or AP providing RNAV track guidance required during simultaneous operations. For uncompensated Baro-VNAV systems, procedure NA below -1°C or above 54°C.

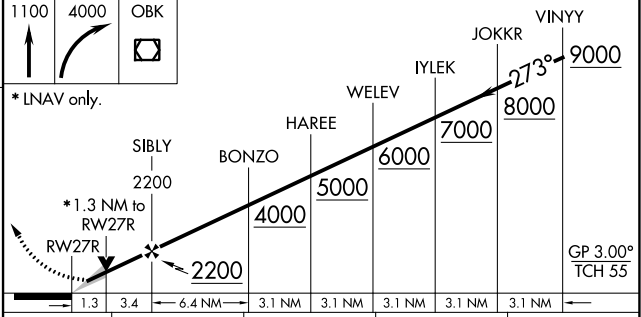
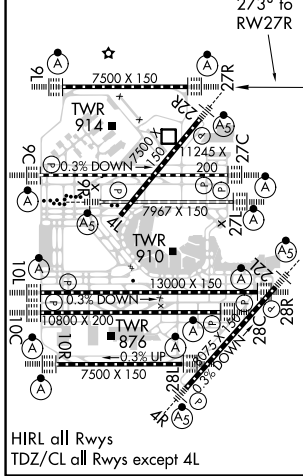
D-ATIS <b>135.4</b>	CHICAGO APP CON <b>119.0 292.125</b>	O'HARE TOWERS <b>128.15 348.0</b> (Rwy 9L/27R) <b>133.0 348.0</b> (10R/28L) <b>124.125 118.05</b> (TWR NORTH) <b>121.75</b> (OBND) <b>121.9</b> (IBND) <b>226.675</b> (ALL TWRS)				GND CON (TWR SOUTH)
------------------------	---	---	--	--	--	------------------------



CLNC DEL <b>121.6</b>	CPDLC
--------------------------	-------



ELEV 680	<b>D</b>	TDZE 664
----------	----------	----------



CATEGORY	A	B	C	D
LPV DA		864/18	200 (200-½)	
LNAV/VNAV DA		961/24	297 (300-½)	
LNAV MDA	1120/24	456 (500-½)	1120/45	456 (500-¾)

EC-3, 09 SEP 2021 to 07 OCT 2021

EC-3, 09 SEP 2021 to 07 OCT 2021