

WAAS CH <b>58143</b> <b>W09D</b>	APP CRS <b>093°</b>	Rwy ldg TDZE Apt Elev	<b>11245</b> <b>673</b> <b>680</b>
--	------------------------	-----------------------------	--

# RNAV (GPS) RWY 9C

CHICAGO O'HARE INTL (O.R.D)

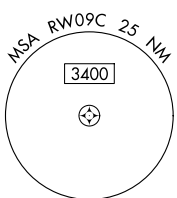
RNP APCH.

▼ Simultaneous approach authorized. LNAV procedure NA during simultaneous operations. Use of FD or AP required during simultaneous operations. For uncompensated Baro-VNAV systems, LNAV/VNAV NA below -19°C or above 54°C. For inop ALS, increase LNAV/VNAV all cats visibility to RVR 4500 and LNAV Cat C/D to 1% SM.

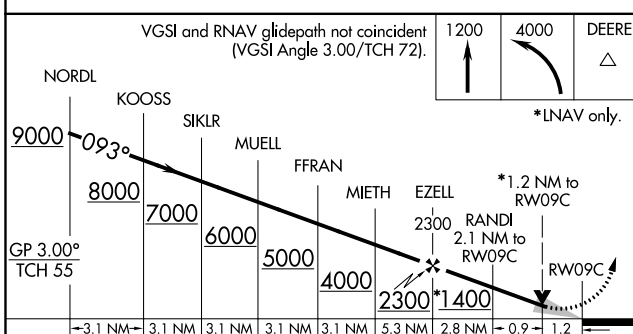
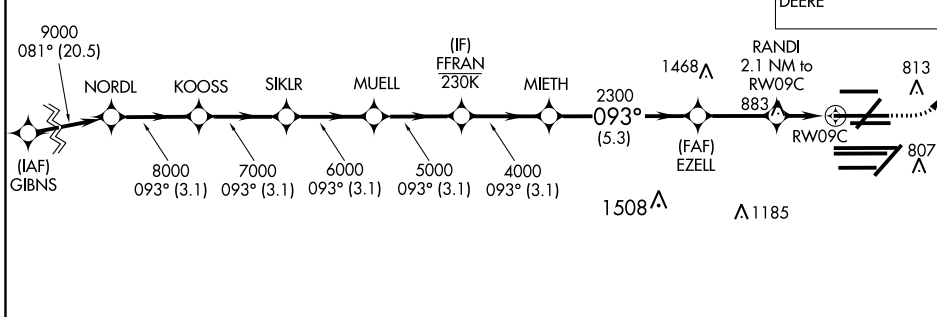
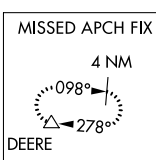


MISSED APPROACH: Climb to 1200 then climbing left turn to 4000 direct DEERE and hold.

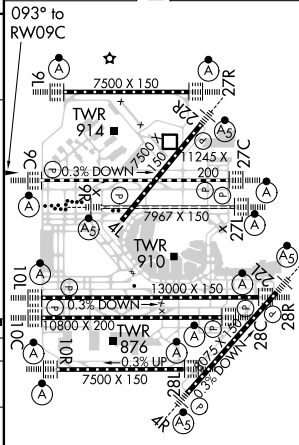
D-ATIS <b>135.4</b> <b>282.225</b>	CHICAGO APP CON <b>119.0 292.125</b>	O'HARE TOWERS <b>128.15 348.0</b> (Rwy 9L/27R) <b>133.0 348.0</b> (10R/28L) <b>120.75 121.15 126.9 132.7 348.0</b> (CENTER)	<b>124.125</b> (TWR NORTH) <b>118.05</b> (TWR SOUTH) <b>226.675</b> (ALL TWRs)	(TWR CENTER) <b>121.75</b> (OBND) <b>121.9</b> (IBND)
--	--	--	--	---



CLNC DEL <b>121.6</b>	CPDLC
--------------------------	-------



ELEV 680	TDZE 673
----------	----------



CATEGORY	A	B	C	D
LPV DA		873/18	200 (200-½)	
LNAV/VNAV DA		976/24	303 (300-½)	
LNAV MDA	1140/24	467 (500-½)	1140/50	467 (500-1)

HIRL all Rwy's  
TDZ/CL all Rwy's except 4L

EC-3, 09 SEP 2021 to 07 OCT 2021

EC-3, 09 SEP 2021 to 07 OCT 2021