

WAAS CH 99508 W09B	APP CRS 093°	Rwy ldg 7500 TDZE 668 Apt Elev 680
--	------------------------	---

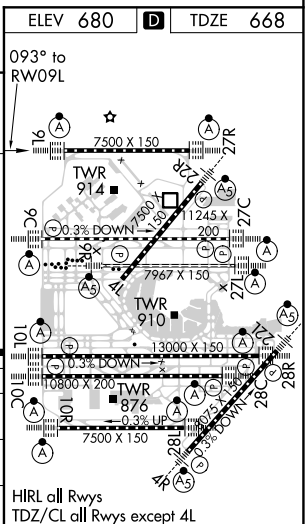
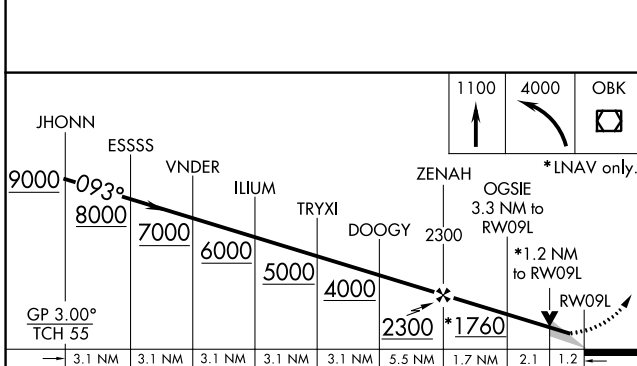
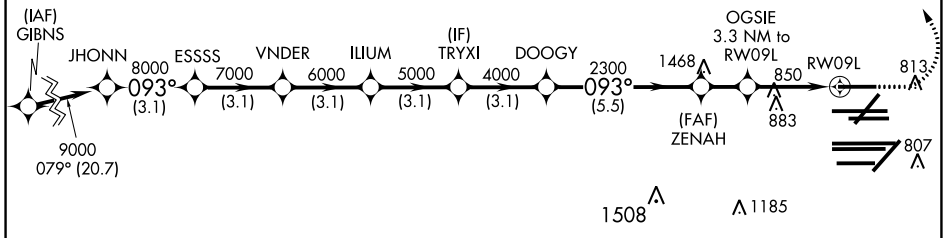
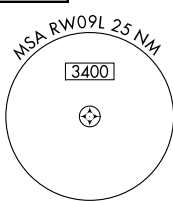
RNAV (GPS) RWY 9L

CHICAGO O'HARE INTL (ORD)

RADAR required for procedure entry. RNP APCH.		ALSIF-2	MISSED APPROACH: Climb to 1100 then climbing left turn to 4000 direct OBK VOR/DME and hold, continue climb-in-hold to 4000.
<p>Simultaneous approach authorized. LNAV procedure NA during simultaneous operations. Use of FD or AP providing RNAV track guidance required during simultaneous operations. For uncompensated Baro-VNAV systems, procedure NA below -19°C or above 54°C.</p>			

CHICAGO APP CON 119.0 292.125	O'HARE TOWERS 128.15 348.0 (Rwy 9L/27R) 133.0 348.0 (10R/28L) 120.75 121.15 126.9 132.7 348.0 (CENTER)	GND CON (TWR NORTH) 124.125 (TWR SOUTH) 118.05 (ALL TWRS) 226.675	(TWR CENTER) 121.75 (OBND) (IBND) 121.9	CLNC DEL 121.6
---	--	--	--	--------------------------

D-ATIS 135.4 282.225	NORTHBROOK OBK CPDLC
--	-------------------------



CATEGORY	A	B	C	D
LPV DA	868/18		200 (200-½)	
LNAV/VNAV DA	1034/35		366 (400-¾)	
LNAV MDA	1100/24	432 (500-½)	1100/40	432 (500-¾)

EC-3, 09 SEP 2021 to 07 OCT 2021

EC-3, 09 SEP 2021 to 07 OCT 2021