

# RNAV (GPS) PRM Y RWY 10R

(CLOSE PARALLEL)

CHICAGO O'HARE INTL (ORD)

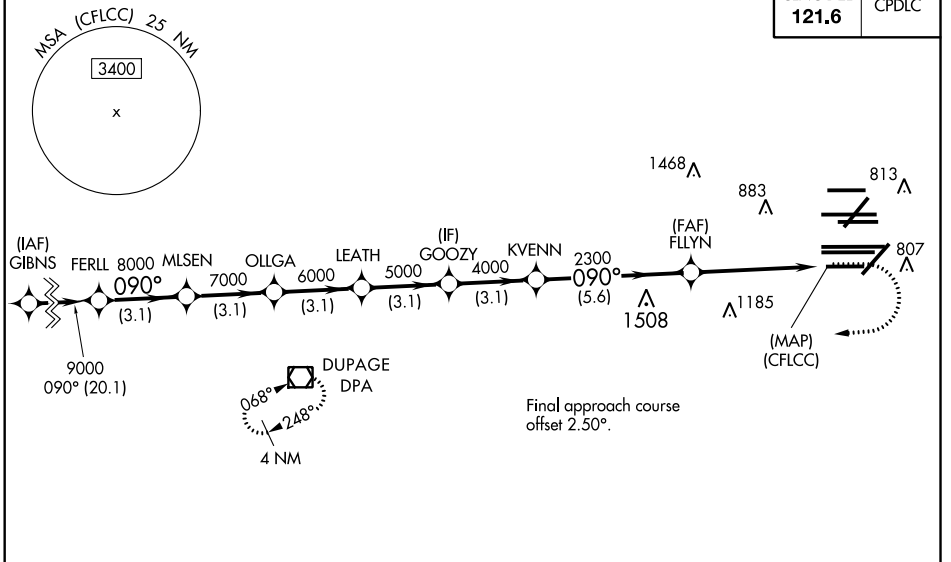
WAAS CH <b>77937</b> <b>W10D</b>	APP CRS <b>090°</b>	Rwy Idg TDZE Apt Elev	<b>7500</b> <b>680</b> <b>680</b>
--	------------------------	-----------------------------	---

RNP APCH.  
 Simultaneous approach authorized. Dual VHF comm required. See additional requirements on AAUP. For uncompensated Baro-VNAV systems, LNAV/VNAV NA below -19°C or above 54°C. Use of FD or AP providing RNAV track guidance required during simultaneous operations. For inop ALS, increase LNAV/VNAV all Cats visibility to 1 $\frac{1}{2}$  SM.

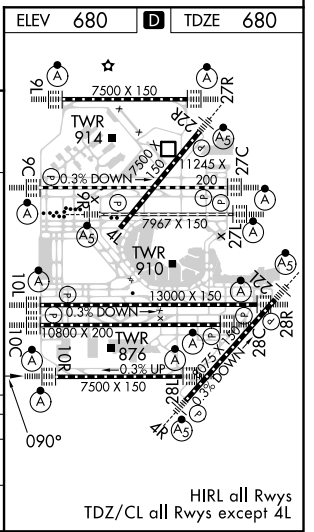
ALS-2  
 MISSED APPROACH: Climb to 1200 then climbing right turn to 4000 direct DPA VOR/DME and hold.

D-ATIS <b>135.4</b> <b>282.225</b>	CHICAGO APP CON <b>119.0 292.125</b>	O'HARE TOWERS <b>128.15 348.0</b> (Rwy 9L/27R) <b>133.0 348.0</b> (10R/28L) <b>120.75 121.15 126.9 132.7 348.0</b> (CENTER) <b>PRM 128.05</b>	GND CON (TWR CENTER) <b>124.125</b> (TWR NORTH) <b>121.75</b> (OBND) (TWR SOUTH) <b>121.9</b> (IBND) <b>226.675</b> (ALL TWR)
--	---	--	---

CINC DEL <b>121.6</b>	CPDLC
--------------------------	-------



		ELEV 680	D	TDZE 680			
FERLL	MLSEN	OLLGA	LEATH	GOOZY	KVENN	FLLYN	(CFLCC)
9000	8000	7000	6000	5000	4000	2300	
GP 3.00							
TCH 55							
	3.1 NM	3.1 NM	3.1 NM	3.1 NM	3.1 NM	5.6 NM	4.9 NM
CATEGORY	A		B		C		D
LPV DA			930/24		250 (300- $\frac{1}{2}$ )		
LNAV/VNAV DA			1157/50		477 (500-1)		



# RNAV (GPS) PRM Y RWY 10R (CLOSE PARALLEL)

EC-3, 09 SEP 2021 to 07 OCT 2021

EC-3, 09 SEP 2021 to 07 OCT 2021