

RNAV (GPS) Y RWY 10R

CHICAGO O'HARE INTL (ORD)

WAAS CH 77937 W10D	APP CRS 090°	Rwy Idg TDZE Apt Elev	7500 680 680
--	------------------------	-----------------------------	---

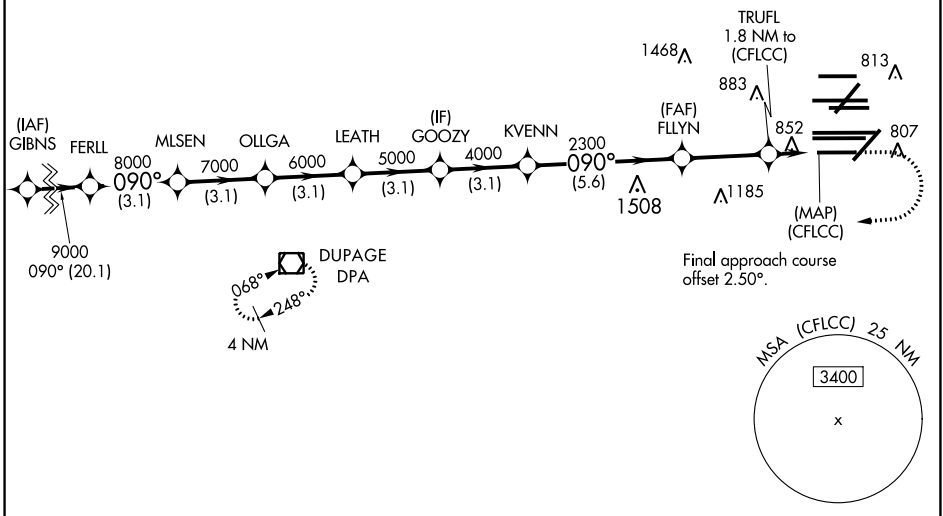
RNP APCH.

Simultaneous approach authorized. For uncompensated Baro-VNAV systems, LNAV/VNAV NA below -19°C or above 54°C.
 LNAV procedure NA during simultaneous operations.
 Use of FD or AP providing RNAV track guidance required during simultaneous operations.
 For inop ALS, increase LNAV/VNAV all Cats visibility to 1/2 SM.

ALS-F-2 	MISSED APPROACH: Climb to 1200 then climbing right turn to 4000 direct DPA VOR/DME and hold.
-------------	--

D-ATIS 135.4 282.225	CHICAGO APP CON 119.0 292.125	O'HARE TOWERS 128.15 348.0 (Rwy 9L/27R) 133.0 348.0 (10R/28L) 120.75 121.15 126.9 132.7 348.0 (CENTER)	GND CON (TWR NORTH) 124.125 (TWR SOUTH) 118.05 (ALL TWRs) 226.675	(TWR CENTER) 121.75 (OBND) (IBND) 121.9
--	---	--	--	--

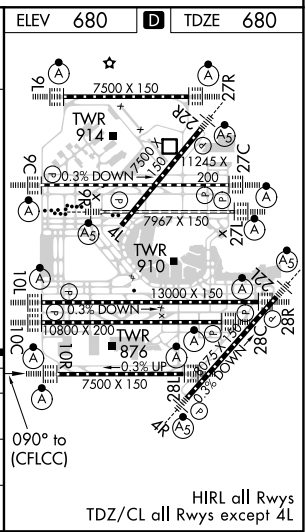
CLNC DEL 121.6	CPDLC
--------------------------	-------



EC-3, 09 SEP 2021 to 07 OCT 2021

EC-3, 09 SEP 2021 to 07 OCT 2021

ELEV 680		D TDZE 680	
*LNAV only.			
GP 3.00 TCH 55	9000	8000	7000
	3.1 NM	3.1 NM	3.1 NM
	6000	5000	4000
	3.1 NM	3.1 NM	3.1 NM
	2300	1300	1200
	5.6 NM	3.1 NM	0.6 NM
			1.2 NM
CATEGORY	A	B	C
LPV DA		930/24	250 (300-1/2)
LNAV/VNAV DA		1157/50	477 (500-1)
LNAV MDA	1120/24	440 (500-1/2)	1120/40 440 (500-3/4)



HIRL all Rwys
TDZ/CL all Rwys except 4L