

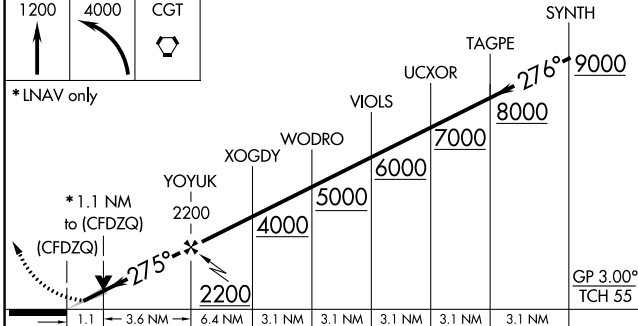
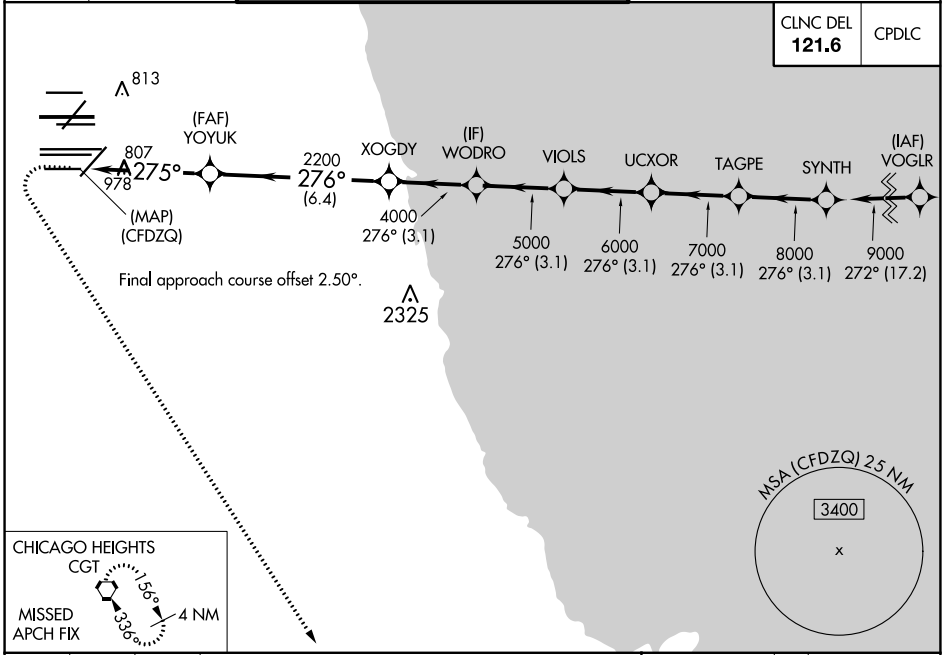
WAAAS CH 93839 W28E	APP CRS 275°	Rwy ldg TDZE 667 Apt Elev 680	7500
---	------------------------	---	-------------

RNAV (GPS) Y RWY 28L

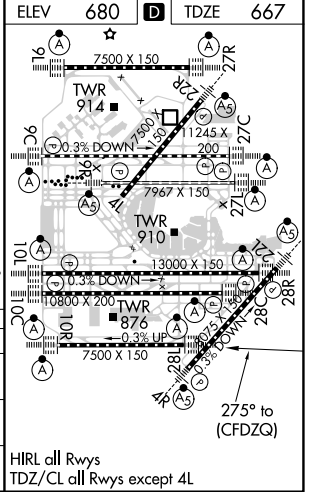
CHICAGO O'HARE INTL (ORD)

RNP APCH: ▼ Simultaneous approach authorized. LNAV procedure NA during simultaneous operations. For uncompensated Baro-VNAV systems, LNAV/VNAV NA below -19°C or above 54°C. Use of FD or AP required during simultaneous operations.	ALSF-2 A	MISSED APPROACH: Climb to 1200 then climbing left turn to 4000 direct CGT VORTAC and hold.
--	-------------	--

D-ATIS 135.4 282.225	CHICAGO APP CON 119.0 292.125	O'HARE TOWERS 128.15 348.0 (Rwy 9L/27R) 133.0 348.0 (10R/28L) 120.75 121.15 126.9 132.7 348.0 (CENTER)	GND CON (TWR CENTER) 124.125 (TWR NORTH) 121.75 (OBND) 118.05 (TWR SOUTH) 121.9 (IBND) 226.675 (ALL TWSR)
--	---	--	---



CATEGORY	A	B	C	D
LPV DA	917/24		250 (300-1/2)	
LNAV/VNAV DA	1090/40		423 (500-3/4)	
LNAV MDA	1060/24	393 (400-1/2)	1060/35	393 (400-5/8)



EC-3, 09 SEP 2021 to 07 OCT 2021

EC-3, 09 SEP 2021 to 07 OCT 2021