

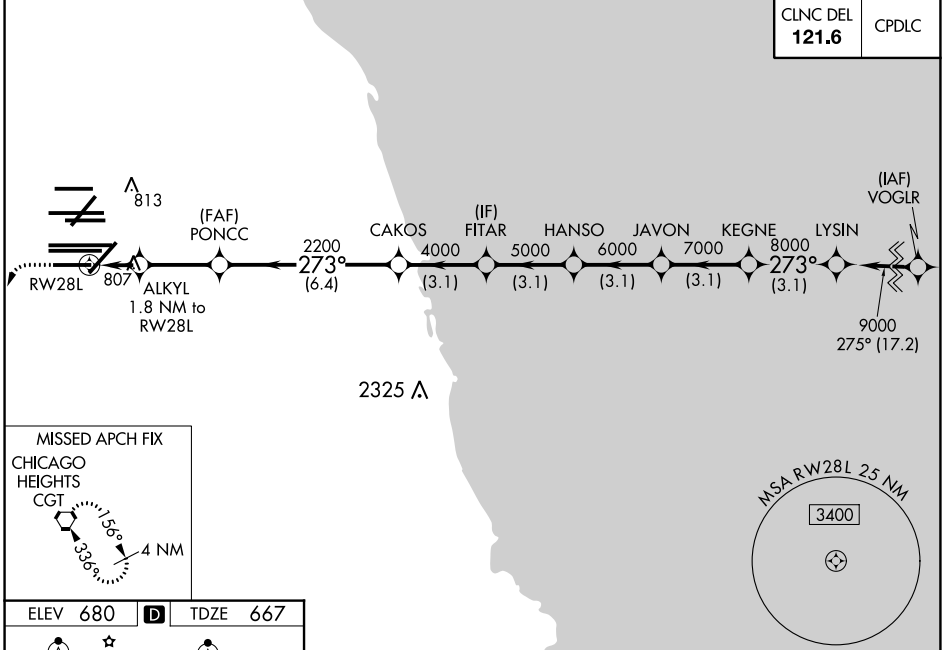
WAAS CH 65837 W28D	APP CRS 273°	Rwy Idg TDZE Apt Elev	7500 667 680
--	------------------------	-----------------------------	---

RNAV (GPS) Z RWY 28L

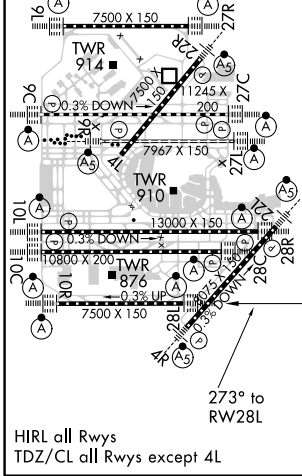
CHICAGO O'HARE INTL (ORD)

RNP APCH.		ALSIF-2		MISSED APPROACH: Climb 1200 then climbing left turn to 4000 direct CGT VORTAC and hold.	
<p>Simultaneous approach authorized. LNAV procedure NA during simultaneous operations. For uncompensated Baro-VNAV systems, LNAV/VNAV NA below -19C or above 54C. Use of FD or AP required during simultaneous operations.</p>					
D-ATIS 135.4 282.225	CHICAGO APP CON 119.0 292.125	O'HARE TOWERS 128.15 348.0 (Rwy 9L/27R) 133.0 348.0 (10R/28L) 120.75 121.15 126.9 132.7 348.0 (CENTER)		GND CON (TWR NORTH) 124.125 (TWR SOUTH) 118.05 (ALL TWRs) 226.675	(TWR CENTER) 121.75 (OBND) (IBND) 121.9

CLNC DEL 121.6	CPDLC
--------------------------	-------



ELEV 680	D	TDZE 667
----------	----------	----------



1200	4000	CGT						
*LNAV only.								
ALKYL	PONCC	CAKOS	FITAR	HANSO	JAVON	KEGNE	LYSIN	
1.8 NM to RWY 28L	2200	4000	5000	6000	7000	8000	9000	
*1.1 NM to RWY 28L	*1280	2200						
1.1 NM	0.7	2.9 NM	6.4 NM	3.1 NM	3.1 NM	3.1 NM	3.1 NM	3.1 NM
CATEGORY	A		B		C		D	
LPV	DA	867/18			200 (200-1/2)			
LNAV/VNAV	DA	1090/40			423 (500-3/4)			
LNAV	MDA	1060/24			393 (400-1/2)		1060/35 393 (400-5/8)	

EC-3, 09 SEP 2021 to 07 OCT 2021

EC-3, 09 SEP 2021 to 07 OCT 2021