

APP CRS 224°	Rwy Idg 8000
	TDZE 938
	Apt Elev 956

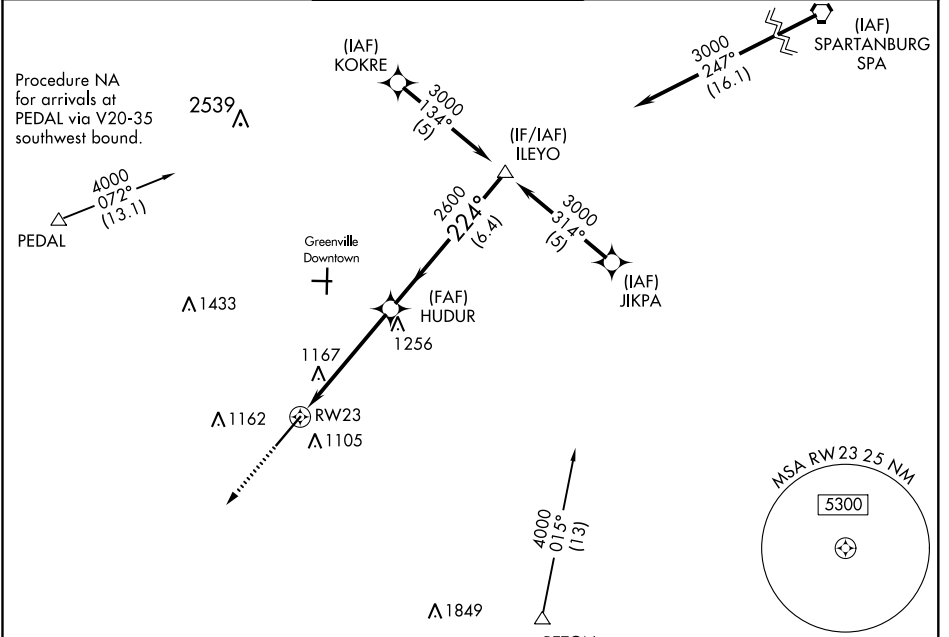
RNAV (GPS) RWY 23

DONALDSON FLD (GYH)

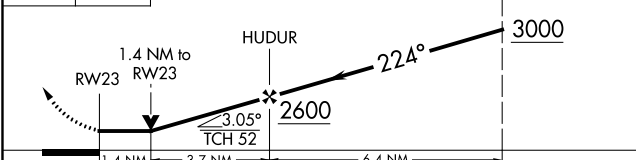
▼ If local altimeter setting not received, use Greer altimeter setting and increase all MDAs 40 feet. VDP NA when using Greer altimeter setting. Helicopter visibility reduction below 3/4 statute mile NA. DME/DME RNP-0.3 NA.

▲ NA MISSED APPROACH: Climb to 3000 direct NINYI and hold.

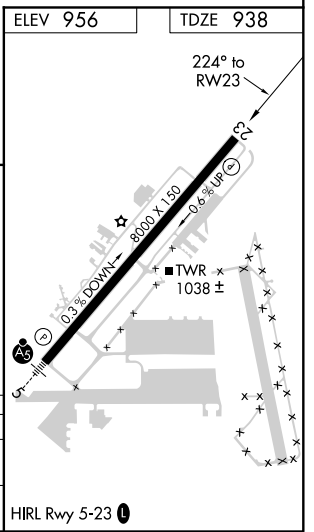
AWOS-3 127.325	GREER APP CON ★ 118.8 270.275	DONALDSON TOWER ★ 133.325 (CTAF) 0 269.25	GND CON 121.4	CLNC DEL 121.4	UNICOM 122.7
--------------------------	---	---	-------------------------	--------------------------	------------------------



3000 NINYI VGS1 and descent angles not coincident (VGS1 Angle 4.14/TCH 95). Procedure Turn NA



CATEGORY	A	B	C	D
RNAV MDA	1420-1	482 (500-1)	1420-1 1/4 482 (500-1 1/4)	1420-1 1/2 482 (500-1 1/2)
CIRCLING	1420-1 464 (500-1)	1480-1 524 (600-1)	1480-1 1/2 524 (600-1 1/2)	1540-2 584 (600-2)



SE-2, 09 SEP 2021 to 07 OCT 2021

SE-2, 09 SEP 2021 to 07 OCT 2021