

VORTAC GRD <b>115.5</b> Chan <b>102</b>	APP CRS <b>080°</b>	Rwy Idg <b>5001</b> TDZE <b>631</b> Apt Elev <b>631</b>
---	------------------------	---

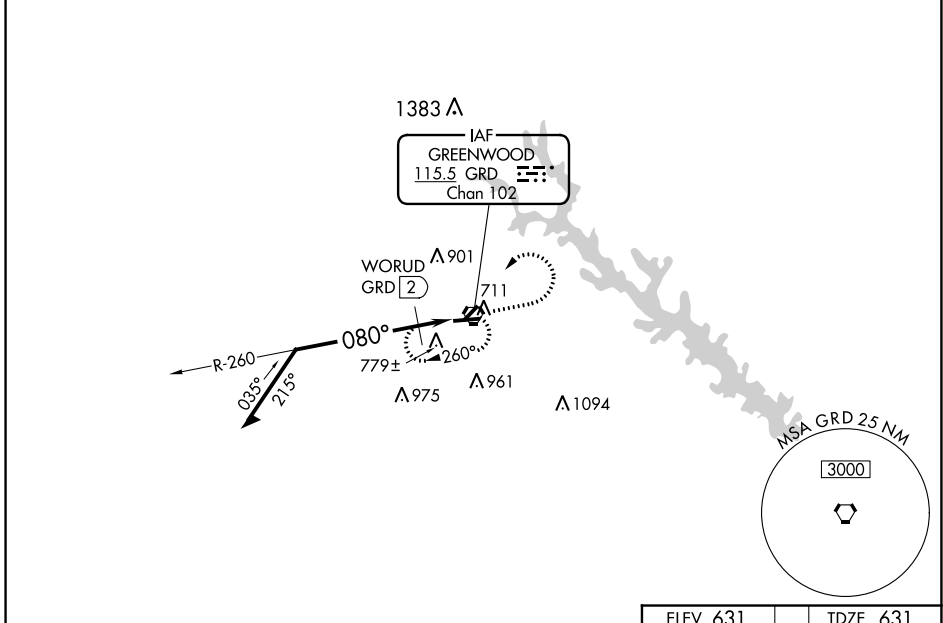
# VOR RWY 9

GREENWOOD COUNTY (GRD)

**⚠** Circling Rwy 5, 23 NA at night. When local altimeter setting not received, use Laurens altimeter setting: increase all MDA 60 feet and Cats C and D visibility ¼ SM. Rwy 9 helicopter visibility reduction below ¾ SM NA.

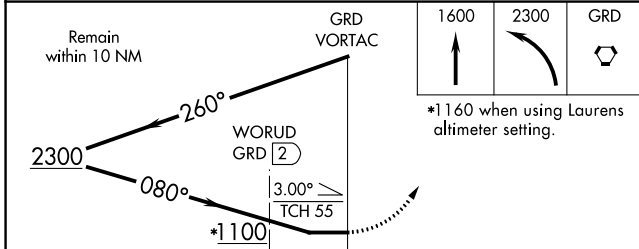
**MISSED APPROACH:** Climb to 1600 then climbing left turn to 2300 direct GRD VORTAC and hold.

ASOS <b>121.125</b>	GREER APP CON ★ <b>120.6 350.2</b>	UNICOM <b>122.975 (CTAF) 0</b>
------------------------	---------------------------------------	-----------------------------------



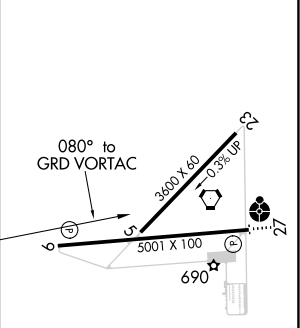
SE-2, 09 SEP 2021 to 07 OCT 2021

SE-2, 09 SEP 2021 to 07 OCT 2021



ELEV 631	TDZE 631
----------	----------

CATEGORY	A	B	C	D
S-9	1100-1	469 (500-1)	1100-1 $\frac{3}{8}$	469 (500-1 $\frac{3}{8}$ )
<b>C</b> CIRCLING	1100-1	469 (500-1)	1320-2 689 (700-2)	1340-2 $\frac{1}{4}$ 709 (800-2 $\frac{1}{4}$ )
WORUD FIX MINIMUMS (DME REQUIRED)				
S-9	1040-1	409 (500-1)	1040-1 $\frac{1}{8}$	409 (500-1 $\frac{1}{8}$ )
<b>C</b> CIRCLING	1080-1 449 (500-1)	1100-1 469 (500-1)	1320-2 689 (700-2)	1340-2 $\frac{1}{4}$ 709 (800-2 $\frac{1}{4}$ )



MIRL Rwy 9-27 **0**  
REIL Rwys 9 and 27 **0**