

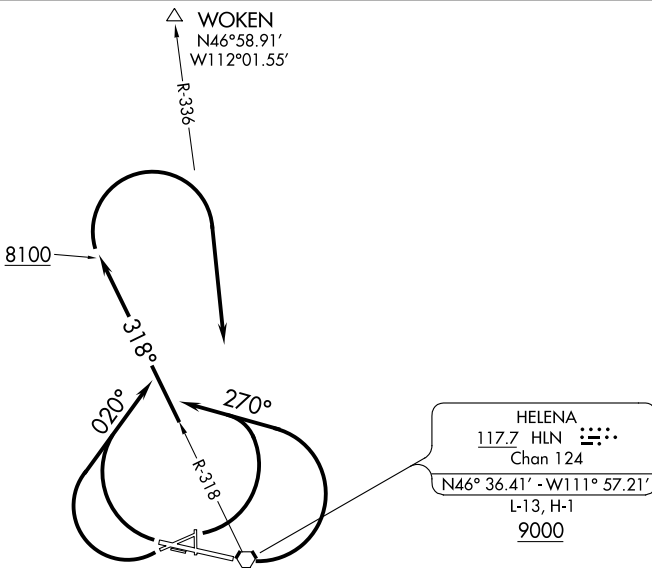
DIVIDE ONE DEPARTURE (OBSTACLE)

SL-192 (FAA)

HELENA RGNL (HLN)
HELENA, MONTANA

GREAT FALLS RADIO
122.55
HELENA TOWER ★
118.3 (CTAF) 257.8
SALT LAKE CENTER
133.4 285.4

WOKEN
N46°58.91'
W112°01.55'



TAKEOFF MINIMUMS

Rwys 17, 35: NA-Environmental.

Rwy 5: Standard with minimum climb of 250' per NM to 8100', or 2200-3 for climb in visual conditions.

Rwy 9: Standard with minimum climb of 240' per NM to 8100', or 2200-3 for climb in visual conditions.

Rwy 23: Standard with minimum climb of 450' per NM to 8100', or 2200-3 for climb in visual conditions.

Rwy 27: Standard with minimum climb of 390' per NM to 8100', or 2200-3 for climb in visual conditions.

TAKEOFF OBSTACLE NOTES

Rwy 5: Trees beginning 991' from DER, 630' right of centerline, up to 100' AGL/3939' MSL. Rising terrain beginning 5' from DER, 495' right of centerline, up to 3826' MSL. Fence beginning 423' from DER, 332' right of centerline, up to 12' AGL/3832' MSL.

Rwy 9: Trees beginning 1391' from DER, 50' left of centerline, up to 100' AGL/3979' MSL. Trees beginning 2928' DER, 878' right of centerline, up to 100' AGL/3979' MSL.

Rwy 23: Tower 4448' from DER, 357' left of centerline, 131' AGL/4054' MSL. Poles beginning 1329' from DER, 3' left of centerline, up to 55' AGL/3996' MSL. Trees beginning 1011' from DER, 37' left of centerline, up to 100' AGL/4059' MSL. Rod on bldg 953' from DER, 321' left of centerline, 44' AGL/3943' MSL. Road (I) 2374' from DER, 771' left of centerline, up to 17' AGL/3972' MSL. OL on hgr 457' from DER, 219' left of centerline, 43' AGL/3905' MSL. Trees beginning 1519' from DER, 142' right of centerline, up to 52' AGL/4011' MSL. Poles beginning 1379' from DER, 57' right of centerline, up to 46' AGL/3965' MSL. Ant on bldg 316' from DER, 352' right of centerline, 34' AGL/3913' MSL bldg 584' from DER, 470' right of centerline, 49' AGL/3948' MSL.

Rwy 27: Trees beginning 1079' from DER, 616' left of centerline, up to 100' AGL/3999' MSL. Bldg 1593' from DER, 731' left of centerline, 18' AGL/3917' MSL. Rising terrain beginning 101' from DER, 347' left of centerline, up to 3871' MSL. Trees beginning 333' from DER, 507' right of centerline, up to 100' AGL/3959' MSL.

NOTE: Chart not to scale.

DEPARTURE ROUTE DESCRIPTION

TAKEOFF RUNWAY 5: Climbing left turn heading 270°, thence. . . .

TAKEOFF RUNWAY 9: Climbing left turn heading 270°, thence. . . .

TAKEOFF RUNWAY 23: Climbing right turn heading 020°, thence. . . .

TAKEOFF RUNWAY 27: Climbing right turn heading 020°, thence. . . .

. . . .Continue climb northwestbound on HLN R-318 to 8100, then climbing right turn direct HLN VORTAC, cross HLN VORTAC at or above 9000 before proceeding on course, or for climb in visual conditions; cross Helena Rgnl Airport northbound at or above 5900 and continue climbing on HLN R-336 to WOKEN INT before proceeding on course.

DIVIDE ONE DEPARTURE (OBSTACLE)

HELENA, MONTANA
HELENA RGNL (HLN)

NW-1, 09 SEP 2021 to 07 OCT 2021

NW-1, 09 SEP 2021 to 07 OCT 2021