

LOC I- HLN	APP CRS	Rwy ldg TDZE	9000
110.1	267°	Apt Elev	3852
			3877


ILS or LOC Y RWY 27

HELENA RGNL (HLN)

ADF or DME Required.

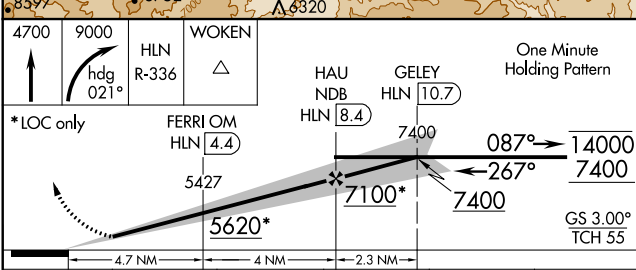
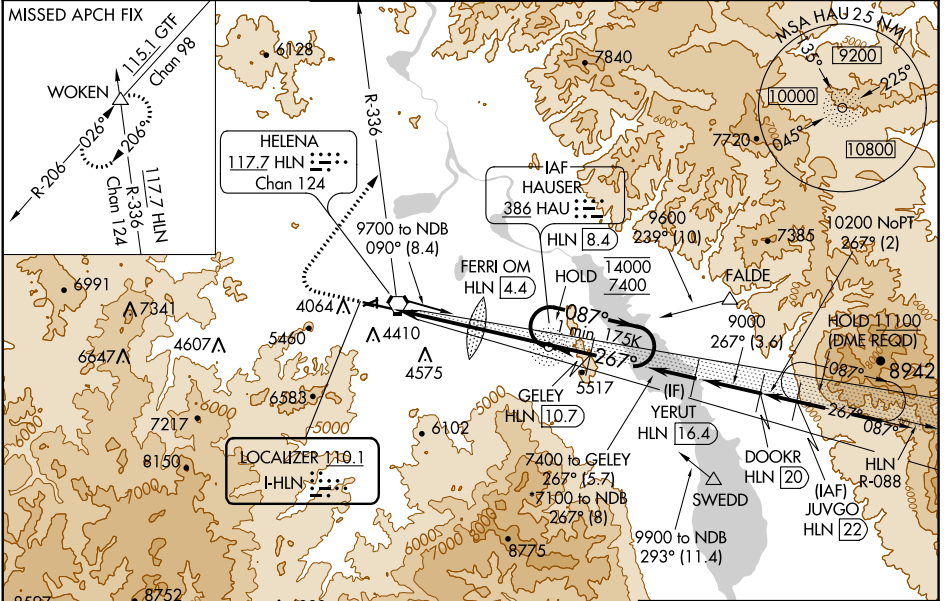
⚠ Circling NA to Rws 10 and 28. Circling to Rwy 5, 23, 35 NA at night. Inop table does not apply to S-LOC 27 Cats C/D/E, FERRI FIX minimums S-LOC 27 Cats A/B. For inop ALS, increase S-ILS 27 all Cats visibility to 1½ SM, S-LOC 27: Cat A visibility to 1¼ SM, FERRI FIX minimums: S-LOC 27 Cat C/D/E visibility to 2 SM. Holding at HAU NDB authorized for Cat A and B aircraft only. Circling NA south of Rwy 9-27 for Cats D and E. DME from HLN VORTAC, simultaneous reception of HHLN and HLN DME required.

MALSR



MISSED APPROACH: Climb to 4700 then climbing right turn to 9000 on heading 021° and HLN VORTAC R-336 to WOKEN INT and hold, continue climb-in-hold to 9000.

ATIS	HELENA APP CON *	HELENA TOWER *	GND CON	UNICOM
120.4	119.5 229.4	118.3 (CTAF) 0 257.8	121.9	122.95



ELEV	3877	D	TDZE	3852
------	------	---	------	------

CATEGORY	A	B	C	D	E
S-ILS 27	4409-1½		557 (600-1½)		
S-LOC 27	5620-1	1768 (1800-1)	5620-3	1768 (1800-3)	
C CIRCLING	5620-1¼ 1743 (1800-1¼)	5620-1½ 1743 (1800-1½)	5920-3	2043 (2100-3)	
FERRI FIX MINIMUMS*					
S-LOC 27	4580-1	728 (800-1)	4580-1½	728 (800-1½)	
C CIRCLING	4640-1 763 (800-1)	4800-1¼ 923 (1000-1¼)	5920-3	2043 (2100-3)	

REIL Rws 9, 17 and 35

MIRL Rws 5-23 and 17-35

HIRL Rwy 9-27

FAF to MAP 8.7 NM

Knots	60	90	120	150	180
Min:Sec	8:42	5:48	4:21	3:29	2:54

NW-1, 09 SEP 2021 to 07 OCT 2021

NW-1, 09 SEP 2021 to 07 OCT 2021