

APP CRS <b>267°</b>	Rwy Idg <b>9000</b>
	TDZE <b>3852</b>
	Apt Elev <b>3877</b>

# RNAV (RNP) Y RWY 27

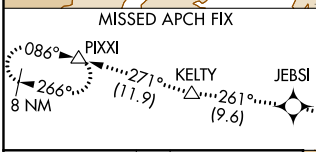
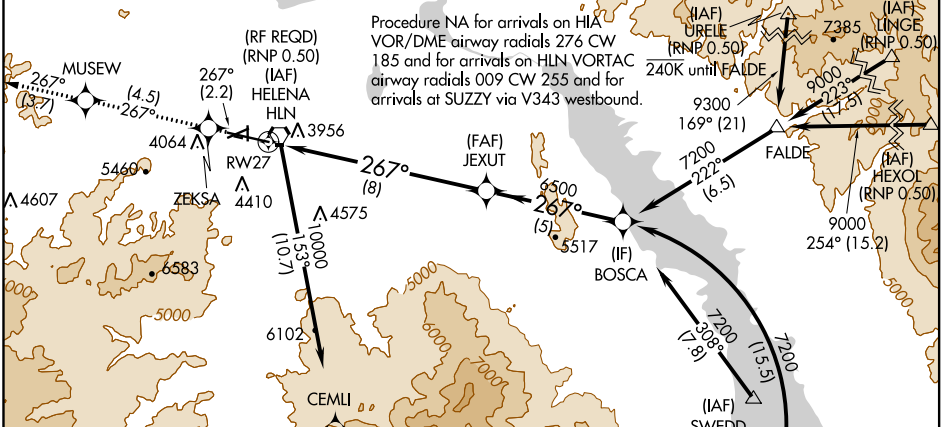
HELENA RGNL (HLN)

**GPS required.** For uncompensated Baro-VNAV systems, procedure NA below -22°C (-7°F) or above 41°C (105°F). For inoperative MALS, increase RNP 0.22\* visibility to 1, and RNP 0.30# visibility to 1½. Missed approach requires RNP less than 1.0. \*Missed approach requires minimum climb of 290 feet per NM to 7700; if unable, see RNAV (RNP) Z RWY 27. #Missed approach requires minimum climb of 270 feet per NM to 7600; if unable, see RNAV (RNP) Z RWY 27.

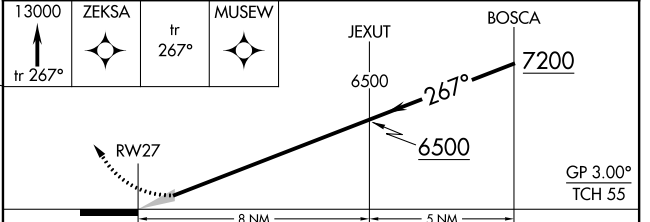
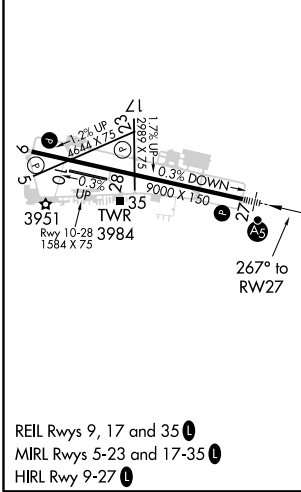
**MALS**

**MISSED APPROACH:** Climb to 13000 on track 267° to ZEKS, then on track 267° to MUSEW, then on track 267° to JEB, then on track 261° to KELTY, then on track 271° track to PIX and hold, continue climb-in-hold to 13000.

ATIS <b>120.4</b>	HELENA APP CON * <b>119.5 229.4</b>	HELENA TOWER * <b>118.3 (CTAF) 257.8</b>	GND CON <b>121.9</b>	UNICOM <b>122.95</b>
----------------------	--	---	-------------------------	-------------------------



ELEV <b>3877</b>	TDZE <b>3852</b>
------------------	------------------



CATEGORY	A	B	C	D
RNP 0.22 DA*		4140-½	288 (300-½)	
RNP 0.30 DA#		4294-1	442 (500-1)	

HELENA, MONTANA  
Orig-D 11DEC14

46°36'N-111°59'W

## HELENA RGNL (HLN) RNAV (RNP) Y RWY 27

NW-1, 09 SEP 2021 to 07 OCT 2021

NW-1, 09 SEP 2021 to 07 OCT 2021