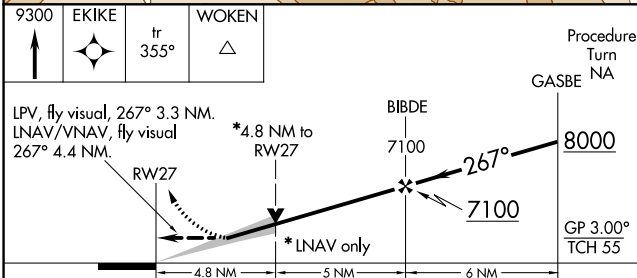
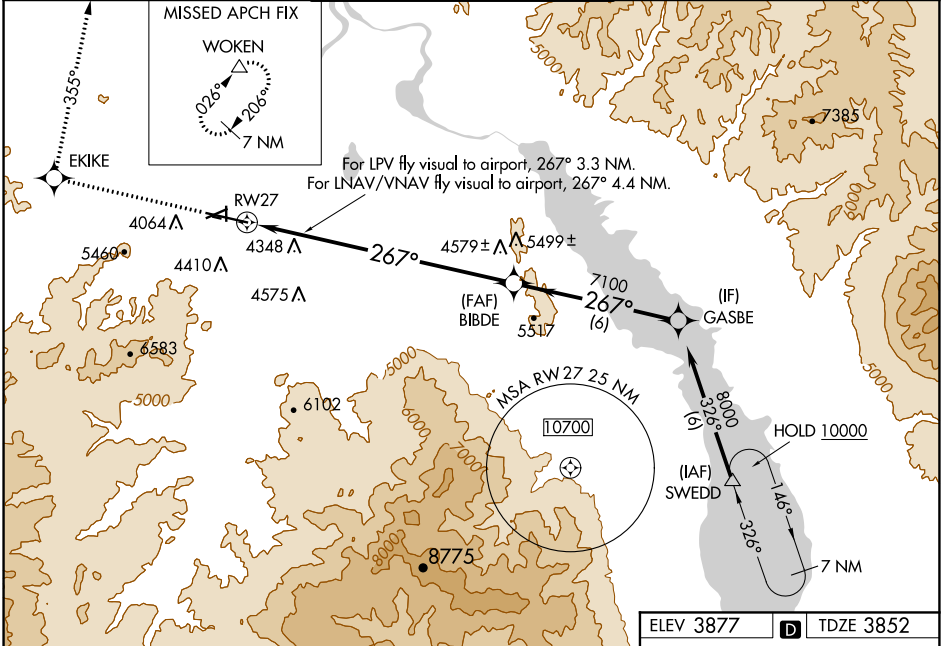


WAAS CH <b>69405</b> <b>W27A</b>	APP CRS <b>267°</b>	Rwy Idg TDZE Apt Elev <b>9000</b> <b>3852</b> <b>3877</b>
--	------------------------	--

# RNAV (GPS) X RWY 27

HELENA RGNL (HLN)

RNP APCH. Circling NA for Cat D south of Rwy 9-27. For uncompensated Baro-VNAV systems, LNAV/VNAV NA below -22°C or above 42°C. Inoperative table does not apply to LNAV Cats A-B. Circling Rwy 5, 23, 35 NA at night. Circling NA to Rwys 10 and 28. -17°C	MALSRL 	MISSED APPROACH: Climb to 9300 direct EKIKE and on track 355° to WOKEN and hold, continue climb-in-hold to 9300.		
ATIS <b>120.4</b>	HELENA APP CON * <b>119.5 229.4</b>	HELENA TOWER * <b>118.3 (CTAF) 257.8</b>	GND CON <b>121.9</b>	UNICOM <b>122.95</b>



ELEV 3877	TDZE 3852
-----------	-----------

Procedure Turn NA

REIL Rwys 9, 17 and 35  
MIRL Rwys 5-23 and 17-35  
HIRL Rwy 9-27

CATEGORY	A	B	C	D
LPV DA	4965-2 1113 (1100-2)		4965-3 1113 (1100-3)	
LNAV/VNAV DA	5289-2 1437 (1500-2)		5289-3 1437 (1500-3)	
LNAV MDA	5440-1 1/4 1588 (1600-1 1/4)	5440-1 1/2 1588 (1600-1 1/2)	5440-2 1/2 1588 (1600-2 1/2)	
CIRCLING	5440-1 1/4 1563 (1600-1 1/4)	5440-1 1/2 1563 (1600-1 1/2)	5920-3 2043 (2100-3)	

NW-1, 09 SEP 2021 to 07 OCT 2021

NW-1, 09 SEP 2021 to 07 OCT 2021