

(SIEBE3.SIEBE) 17341

SIEBE THREE DEPARTURE

AL-192 (FAA)

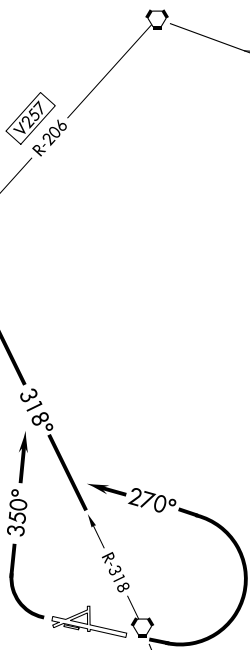
HELENA RGNL (HLN)
HELENA, MONTANA

ATIS 120.4
GND CON
121.9
HELENA TOWER*
118.3 (CTAF) 257.8
HELENA DEP CON*
119.5 229.4
SALT LAKE CENTER
133.4 285.4

SIEBE
N46° 53.09'
W112° 09.08'
L-13

GREAT FALLS
115.1 GTF
Chan 98

HELENA
117.Z HLN
Chan 124
N46°36.41'-W111°57.21'



TAKEOFF MINIMUMS

Rwy 17, 35, 05, 23: NA-ATC

Rwy 09: Standard with minimum climb of 270' per NM to 9000'.

Rwy 27: Standard with minimum climb of 390' per NM to 7200'.

NOTE: Chart not to scale.

DEPARTURE ROUTE DESCRIPTION

TAKEOFF RUNWAY 9: Climbing left turn heading 270°, thence. . . .

TAKEOFF RUNWAY 27: Climbing right turn heading 350°, thence. . . .

. . . .intercept HLN R-318 to SIEBE INT.

SIEBE THREE DEPARTURE

(SIEBE3.SIEBE) 30JUN11

HELENA, MONTANA
HELENA RGNL (HLN)

NW-1, 09 SEP 2021 to 07 OCT 2021

NW-1, 09 SEP 2021 to 07 OCT 2021